



VL 041 707

Stainless steel with aluminum
Control unit
Width 3 3/8" (8.5 cm)

VL 040 707

Stainless steel with aluminum
Expansion element
Width 3 3/8" (8.5 cm)

Optional accessories

AS 070 000

Connection piece for extension
in the case of installation next to
VK or VF.

VV 200 000

Connecting strip for combination
with other

Vario cooktops with integrated
control panel.

LS 041 000

Air deflector for combination of
VL 040/041 with gas appliances
to prevent a flame which has
been set to a low level from being
extinguished.

200 series Vario downdraft ventilation

VL 040/VL 041

- Ventilation element integrated
in the countertop. The least
conspicuous ventilation method
around.
- Effective extraction at
countertop level.
- More head room. Gives more
space over the cooking area.

Downdraft ventilation system
control unit.

Ventilation element for installation
between two cooktops or special
built-in appliances with integrated
control panel.

Features

Shot-blasted stainless steel
housing.
Power control by 2-stage switch.
Ventilation grill can be removed.
Stainless steel grease filter,
dishwasher-safe.

VL 040 707 air intake used only in
conjunction with VL 041 707.

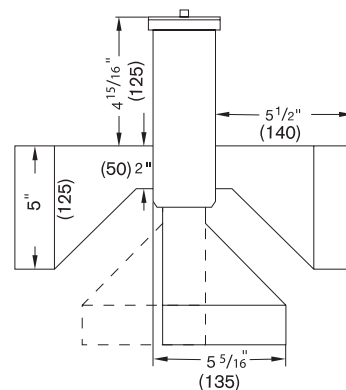
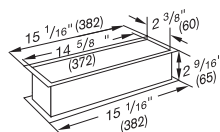
Planning notes

VL 041/040 707 must be installed
with remote blower GB 031 707.
Extraction through ø 5" ducting to
remote blower unit GB 031 707.
Combination of only 1x VL 041 and
1x VL 040 possible.
Unit comes with a standard
120V / 60Hz wall plug.

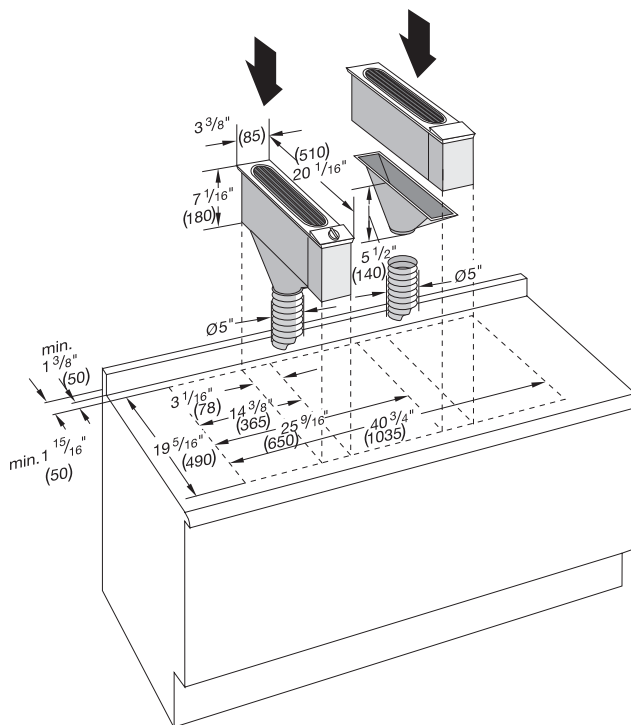
Rating

120V / 60Hz

AS 070 000

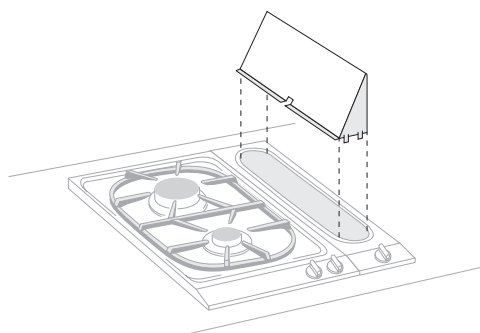


VL 041 707 continued



Numbers indicated
inside parenthesis () = mm

LS 041 000



Place and snap the air baffle on the ventilation grill which has been
turned over.