



WS 282 710

Stainless steel-backed glass front
Width 30" (76 cm)
Height 10 1/2"

WS 282 730

Aluminum-backed glass front
Width 30" (76 cm)
Height 10 1/2"

200 series convection warming drawer

WS 282

- Extra-wide 30" warming drawer, with stainless steel or aluminum-backed glass front. Perfect for combination with BO/BS 280/281.
- Large temperature range from 140°F – 200°F. It not only warms plates, but also reheats and keeps food and drinks warm or finishes a roast – a versatile addition to your kitchen.
- Integrated base plate heating. Maximum usable interior volume.

Net volume 2 cu.ft.

Features

- Timer functions: countdown timer, Sabbath mode.
- Four temperature levels.
- Temperature range from 140°F – 200°F.
- Convection fan for even heat distribution.
- Touch key operation.
- Stainless steel interior.
- Operation indicator.
- Residual heat indicator.
- Removable handle.
- Drawer pull at the front bottom center of the drawer.
- Open-sided design.
- Full extension drawer.

Volume capacity

Dinner set for 12 persons including 11" plates and soup plates. Additional bowls, soup bowls and serving dishes depending on size. Interior volume H 7 11/16" x W 23 5/8" x D 18 7/8". Max. load 55 lbs.

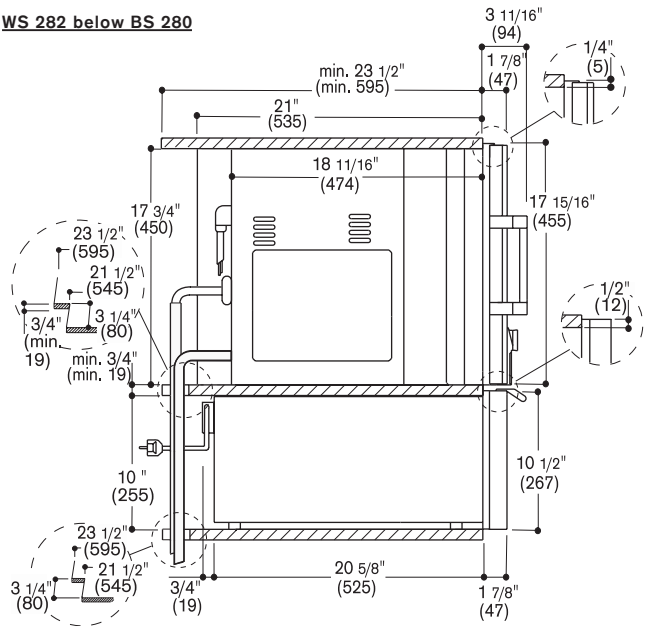
Planning notes

The front of the appliance extends 1 7/8" from the cabinet front. Always use an intermediate shelf when mounting a BO/BS 280/281 above warming drawer. The shelf between WS and BO/BS has to be at least 3/4" thick. When mounting the drawer below BS 280/281, plan a recess of at least 1 3/8" between the back wall and the warming drawer to allow for the inlet and outlet hose to be installed appropriately. With a niche depth of 22 1/4", the electric outlet can be planned behind the appliance. Please read the installation details regarding oven combination on the previous page.

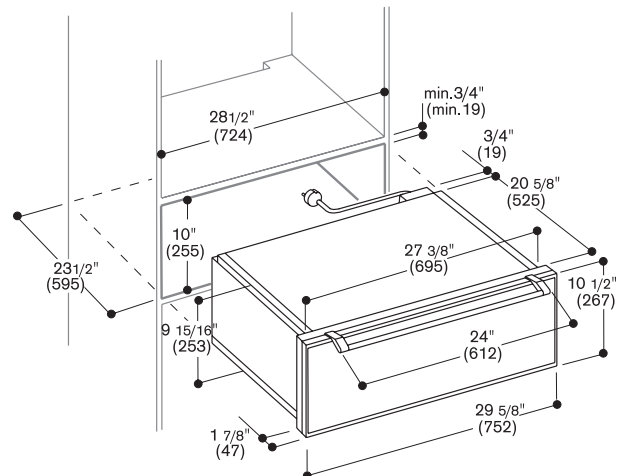
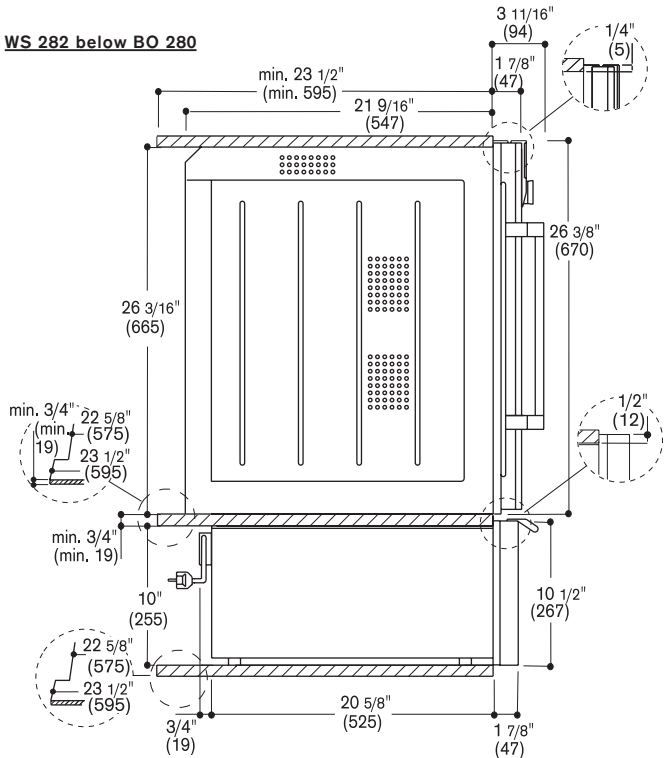
Rating

Total rating: 0.93 kW.
Total Amps: 15
120V / 60Hz
Plan for a connecting cable.

WS 282 below BS 280



WS 282 below BO 280



Numbers indicated inside parenthesis () = mm