

Aiki Ni II Pattern Library / Haiku GlasBac® Tile



Aiki Ni II Pattern Library increases the possibilities of patterned carpet design.
 Mix and match 7 patterns, 12 color schemes and 1 layout options. Combine your creations with other patterns or accent with solid colors. The combinations are endless!

Style#: 14714
Color#: 101777
Pattern#: M0037
Carpet Type: Tile
Standard Size: 50 cm x 50 cm (19.69 in x 19.69 in)
Backing Options: GlasBac® RE Tile (50 cm x 50 cm), GlasBac® Tile (50 cm x 50 cm), NexStep® Tile (50 cm x 50 cm)
Layout Options:



Specifications for GlasBac® Tile

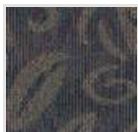
Product Number: M0037-14714101777
Product Construction: Tufted Textured Loop
Soil/Stain Protection: Protekt®
Antimicrobial Treatment: (AATCC 138 Washed) (AATCC 174 Parts 2&3) Intersept®
Yarn System: Post-Consumer Content Type 6,6 Nylon
Yarn Manufacturer: Universal and Invista
Dye Method: 64% Solution Dye, 36% Yarn Dye
Post-Industrial: 47% - 47%
Post-Consumer: 1%
Total Recycled Content: 48% - 48%

Product Specifications	U.S.	Metric
Tufted Yarn Weight:	17 oz/yd ²	576 g/m ²
Machine Gauge:	1/12 in	47.2 ends/10 cm
Pile Height:	.18 in	4.6 mm
Pile Thickness:	.109	2.8
Stitches:	8.33/in	32.79521 ends/10cm
Pile Density:	5615	
Size:	19.69 in x 19.69 in	50 cm x 50 cm

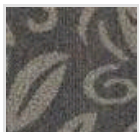
Performance Specifications

Indoor Air Quality: Green Label Plus Certified [#GLP0820](#)
Sustainable Carpet Assessment Standard: NSF-140 Gold
Radiant Panel: (ASTM E-648) Class 1
Smoke Density: (ASTM E - 662)
Lightfastness: (AATCC 16 - E)
Static: (AATCC - 134) < 3.0 KV

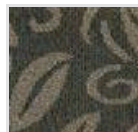
Other Colors for Aiki Ni II Pattern Library



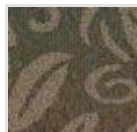
Lotus
Color#: 101778



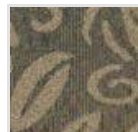
Shogun
Color#: 101779



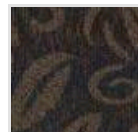
Wasabi
Color#: 101780



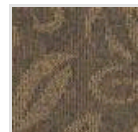
Bento
Color#: 101781



Koan
Color#: 101782



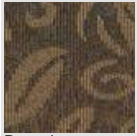
Imari
Color#: 101783



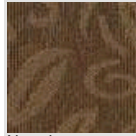
Kanto
Color#: 101784



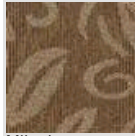
Shitake
Color#: 101785



Pagoda
Color#: 101786



Netsuke
Color#: 101787



Mikado
Color#: 101788

All Product Specifications are averages derived from product sample testing and are subject to normal manufacturing tolerances and testing tolerances. "Tufted Yarn Weight" refers to total input weight of yarn used in tufting process, and processes such as tufting and shearing will result in a lower finished yarn weight in purchased carpet. Pile Density stated in the Product Specifications is based on the Tufted Yarn Weight. Product Specifications may be changed without notice as long as product performance is not materially affected.