

Alliteration / Indigo/Asparagus GlasBac® Tile

Style#: 13912

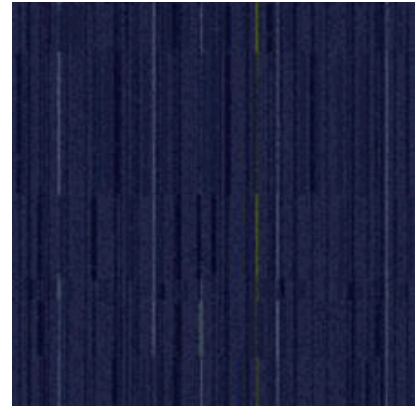
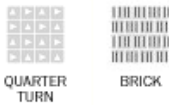
Color#: 9719

Carpet Type: Tile

Standard Size: 50 cm x 50 cm (19.69 in x 19.69 in)

Backing Options: GlasBac® RE Tile (50 cm x 50 cm), GlasBac® Tile (50 cm x 50 cm), NexStep® Tile (50 cm x 50 cm)

Layout Options:



Specifications for GlasBac® Tile

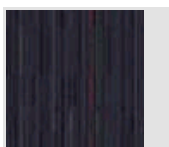
Product Number:	139129719
Product Construction:	Tufted Sheared
Soil/Stain Protection:	Protekt [®]
Antimicrobial Treatment:	(AATCC 138 Washed) (AATCC 174 Parts 2&3) Intersept [®]
Yarn System:	Post-Consumer Content Type 6 Nylon
Yarn Manufacturer:	Aquafil
Dye Method:	100% Solution Dye
Post-Industrial:	42% - 45%
Post-Consumer:	1%
Total Recycled Content:	43% - 46%

Product Specifications	U.S.	Metric
Tufted Yarn Weight:	24 oz/yd ²	814 g/m ²
Machine Gauge:	1/10 in	39.4 ends/10 cm
Pile Height:	.15 in	3.8 mm
Pile Thickness:	.1	2.5
Stitches:	13/in	51.181 ends/10cm
Pile Density:	8640	
Size:	19.69 in x 19.69 in	50 cm x 50 cm

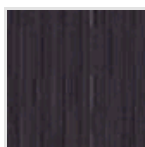
Performance Specifications

Indoor Air Quality:	Green Label Plus Certified #GLP0820
Sustainable Carpet Assessment Standard:	NSF-140 Gold
Radiant Panel:	(ASTM E-648) Class 1
Smoke Density:	(ASTM E - 662)
Lightfastness:	(AATCC 16 - E)
Static:	(AATCC - 134) < 3.0 KV

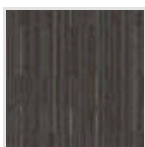
Other Colors for Alliteration



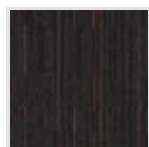
Storm/Red
Color#: 9720



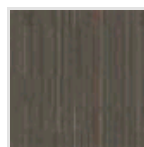
Graphite/Lilac
Color#: 9721



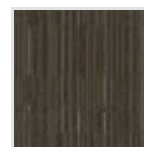
Nickel/Earth Rust
Color#: 9722



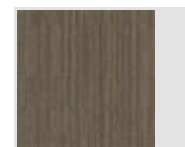
Hemlock/Earth Rust
Color#: 9723



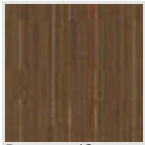
Mineral/Persimmon
Color#: 9724



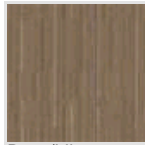
Sage/Prairie
Color#: 9725



Palmetto/Lilac Haze
Color#: 9726



Beeswax/Orange
Color#: 9727



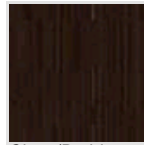
Putty/Lilac
Color#: 9728



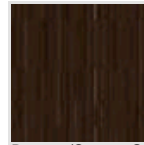
Raffia/Spun Gold
Color#: 9729



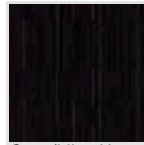
Parchment/Asparagus
Color#: 9730



Clove/Prairie
Color#: 9731



Bronze/Secret Garden
Color#: 9732



Onxy/Lilac Haze
Color#: 9733



Mushroom/Waterfall
Color#: 9734

All Product Specifications are averages derived from product sample testing and are subject to normal manufacturing tolerances and testing tolerances. "Tufted Yarn Weight" refers to total input weight of yarn used in tufting process, and processes such as tufting and shearing will result in a lower finished yarn weight in purchased carpet. Pile Density stated in the Product Specifications is based on the Tufted Yarn Weight. Product Specifications may be changed without notice as long as product performance is not materially affected.