

AxTile Pattern Library / Hunter GlasBac® Tile



AxTile Pattern Library increases the possibilities of patterned carpet design.
 Mix and match 104 patterns, 48 color schemes and 2 layout options. Combine your creations with other patterns or accent with solid colors. The combinations are endless!

Style#: 12431
Color#: 7314
Pattern#: M0309
Carpet Type: Tile
Standard Size: 50 cm x 50 cm (19.69 in x 19.69 in)



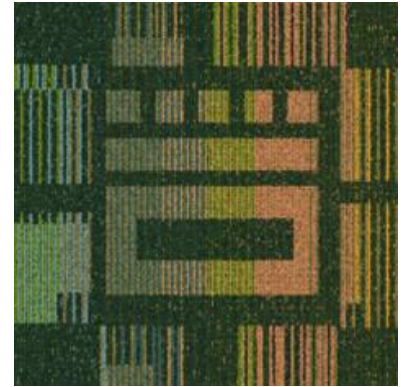
Backing Options: GlasBac® RE Tile (50 cm x 50 cm), GlasBac® Tile (50 cm x 50 cm), NexStep® Tile (50 cm x 50 cm)
Layout Options:



QUARTER
TURN



BRICK



Specifications for GlasBac® Tile

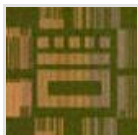
Product Number:	M0309-124317314
Product Construction:	Tufted Cut & Loop
Soil/Stain Protection:	Protekt®
Antimicrobial Treatment:	(AATCC 138 Washed) (AATCC 174 Parts 2&3) Intersept®
Yarn System:	Type 6 Nylon
Yarn Manufacturer:	Aquafil
Dye Method:	100% Solution Dye
Post-Industrial:	57% - 57%
Post-Consumer:	5%
Total Recycled Content:	62% - 62%

Product Specifications	U.S.	Metric
Tufted Yarn Weight:	23 oz/yd ²	780 g/m ²
Machine Gauge:	5/64 in	50.4 ends/10 cm
Pile Height:	.19 in	4.8 mm
Pile Thickness:	.156	4
Stitches:	9/in	35.433 ends/10cm
Pile Density:	5308	
Size:	19.69 in x 19.69 in	50 cm x 50 cm

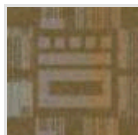
Performance Specifications

Indoor Air Quality:	Green Label Plus Certified #GLP0820
Sustainable Carpet Assessment Standard:	NSF-140 Gold
Radiant Panel:	(ASTM E-648) Class 1
Smoke Density:	(ASTM E - 662)
Lightfastness:	(AATCC 16 - E)
Static:	(AATCC - 134) < 3.0 KV

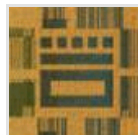
Other Colors for AxTile Pattern Library



Olive
Color#: 7315



Khaki
Color#: 7316



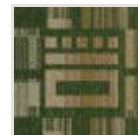
Yellow
Color#: 7317



Emerald
Color#: 7318



Green
Color#: 7319



Moss
Color#: 7320



Mint
Color#: 7321



All Product Specifications are averages derived from product sample testing and are subject to normal manufacturing tolerances and testing tolerances. "Tufted Yarn Weight" refers to total input weight of yarn used in tufting process, and processes such as tufting and shearing will result in a lower finished yarn weight in purchased carpet. Pile Density stated in the Product Specifications is based on the Tufted Yarn Weight. Product Specifications may be changed without notice as long as product performance is not materially affected.