

Broadleaf Loop / Glade GlasBac® Tile

Style#: 14716

Color#: 101989

Carpet Type: Tile

Standard Size: 50 cm x 50 cm (19.69 in x 19.69 in)

Backing Options: GlasBac® RE Tile (50 cm x 50 cm), GlasBac® Tile (50 cm x 50 cm), NexStep® Tile (50 cm x 50 cm), Sheet Goods (1.828 m)

Layout Options:



Specifications for GlasBac® Tile

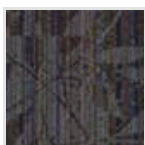
Product Number:	14716101989
Product Construction:	Tufted Textured Loop
Soil/Stain Protection:	Protekt ² ®
Antimicrobial Treatment:	(AATCC 138 Washed) (AATCC 174 Parts 2&3) Intersept®
Yarn System:	Post-Consumer Content Type 6,6 Nylon
Yarn Manufacturer:	Universal
Dye Method:	100% Solution Dye
Post-Industrial:	47% - 47%
Post-Consumer:	2%
Total Recycled Content:	49% - 49%

Product Specifications	U.S.	Metric
Tufted Yarn Weight:	19 oz/yd ²	644 g/m ²
Machine Gauge:	1/12 in	47.2 ends/10 cm
Pile Height:	.15 in	3.8 mm
Pile Thickness:	.101	2.6
Stitches:	9/in	35.433 ends/10cm
Pile Density:	6772	
Size:	19.69 in x 19.69 in	50 cm x 50 cm

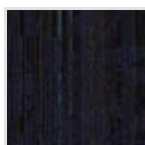
Performance Specifications

Indoor Air Quality:	Green Label Plus Certified #GLP0820
Sustainable Carpet Assessment Standard:	NSF-140 Gold
Radiant Panel:	(ASTM E-648) Class 1
Smoke Density:	(ASTM E - 662)
Lightfastness:	(AATCC 16 - E)
Static:	(AATCC - 134) < 3.0 KV

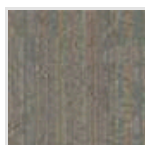
Other Colors for Broadleaf Loop



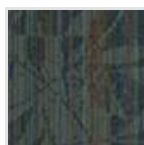
Delta
Color#: 101990



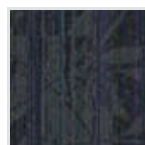
Moorland
Color#: 101991



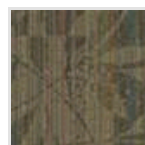
Plateau
Color#: 101992



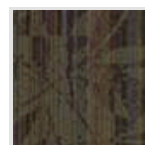
Canopy
Color#: 101993



Foliage
Color#: 101994



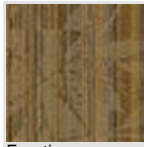
Prairie
Color#: 101995



Savanna
Color#: 101996



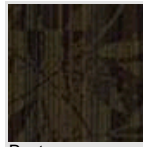
Pampas
Color#: 101997



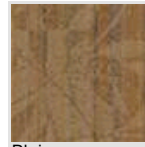
Frontier
Color#: 101998



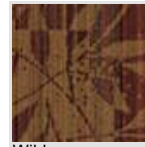
Meadow
Color#: 101999



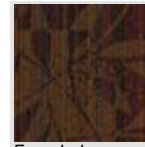
Pasture
Color#: 102000



Plains
Color#: 102001



Wilderness
Color#: 102002



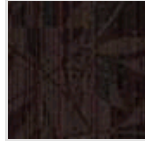
Everglades
Color#: 102003



Terrace
Color#: 102004



Steppe
Color#: 102005



Serengeti
Color#: 102006

All Product Specifications are averages derived from product sample testing and are subject to normal manufacturing tolerances and testing tolerances. "Tufted Yarn Weight" refers to total input weight of yarn used in tufting process, and processes such as tufting and shearing will result in a lower finished yarn weight in purchased carpet. Pile Density stated in the Product Specifications is based on the Tufted Yarn Weight. Product Specifications may be changed without notice as long as product performance is not materially affected.