

Cap and Blazer / Rugby GlasBac® RE Tile

Style#: 12482
Color#: 100869
Carpet Type: Tile
Standard Size: 50 cm x 50 cm (19.69 in x 19.69 in)
Backing Options: GlasBac® RE Tile (50 cm x 50 cm), GlasBac® Tile (50 cm x 50 cm)
Layout Options:



Specifications for GlasBac® RE Tile

Product Number:	12482100869
Product Construction:	Tufted Textured Loop
Soil/Stain Protection:	Protekt®
Antimicrobial Treatment:	(AATCC 138 Washed) (AATCC 174 Parts 2&3) Intersept®
Yarn System:	Post-Consumer Content Type 6 Nylon
Yarn Manufacturer:	Aquafil
Dye Method:	100% Solution Dye
Post-Industrial:	49% - 49%
Post-Consumer:	29%
Total Recycled Content:	78% - 78%

Product Specifications	U.S.	Metric
Tufted Yarn Weight:	20 oz/yd ²	678 g/m ²
Machine Gauge:	5/64 in	50.4 ends/10 cm
Pile Height:	.14 in	3.6 mm
Pile Thickness:	.096	2.4
Stitches:	8.66/in	34.09442 ends/10cm
Pile Density:	7500	
Size:	19.69 in x 19.69 in	50 cm x 50 cm

Performance Specifications

Indoor Air Quality:	Green Label Plus Certified #GLP0820
Sustainable Carpet Assessment Standard:	NSF-140 Platinum
Radiant Panel:	(ASTM E-648) Class 1
Smoke Density:	(ASTM E - 662)
Lightfastness:	(AATCC 16 - E)
Static:	(AATCC - 134) < 3.0 KV

Other Colors for Cap and Blazer

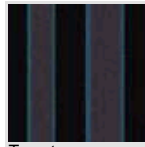




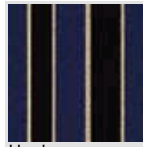
Academy
Color#: 100877



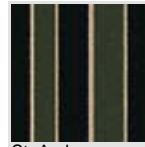
Harrow
Color#: 100878



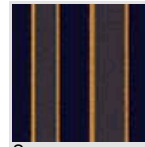
Taunton
Color#: 100879



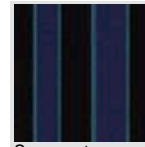
Henley
Color#: 100880



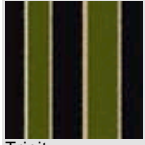
St. Andrews
Color#: 100881



Surrey
Color#: 100882



Somerset
Color#: 100883



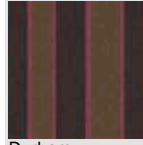
Trinity
Color#: 100884



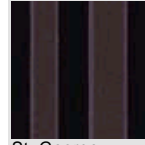
St. James
Color#: 100885



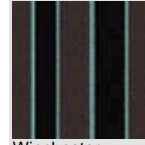
St. Patrick
Color#: 100886



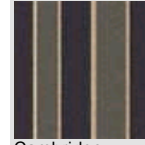
Durham
Color#: 100887



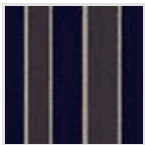
St. George
Color#: 100888



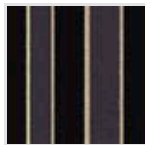
Winchester
Color#: 100889



Cambridge
Color#: 100890



Oxford
Color#: 100891



Eton
Color#: 100892

All Product Specifications are averages derived from product sample testing and are subject to normal manufacturing tolerances and testing tolerances. "Tufted Yarn Weight" refers to total input weight of yarn used in tufting process, and processes such as tufting and shearing will result in a lower finished yarn weight in purchased carpet. Pile Density stated in the Product Specifications is based on the Tufted Yarn Weight. Product Specifications may be changed without notice as long as product performance is not materially affected.