

Distressed / Verdigris GlasBac® RE Tile

Style#: 1015U

Color#: 9343

Carpet Type: Tile

Standard Size: 50 cm x 50 cm (19.69 in x 19.69 in)



Backing Options: GlasBac® RE Tile (50 cm x 50 cm), GlasBac® RE Tile (50 cm x 50 cm), GlasBac® Tile (50 cm x 50 cm), NexStep® Tile (50 cm x 50 cm)

Layout Options:



Specifications for GlasBac® RE Tile

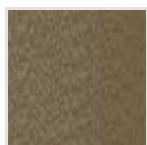
| | |
|---------------------------------|---|
| Product Number: | 1015U9343 |
| Product Construction: | Tufted Level Loop |
| Soil/Stain Protection: | Protekt [®] |
| Antimicrobial Treatment: | (AATCC 138 Washed) (AATCC 174 Parts 2&3) Intersept [®] |
| Yarn System: | Non-Virgin Type 6 Nylon |
| Yarn Manufacturer: | Aquafil |
| Dye Method: | |
| Post-Industrial: | 48% - 48% |
| Post-Consumer: | 29% |
| Total Recycled Content: | 77% - 77% |

| Product Specifications | U.S. | Metric |
|----------------------------|-----------------------|----------------------|
| Tufted Yarn Weight: | 16 oz/yd ² | 542 g/m ² |
| Machine Gauge: | 5/64 in | 50.4 ends/10 cm |
| Pile Height: | .08 in | 2 mm |
| Pile Thickness: | .03 | .8 |
| Stitches: | 8.66/in | 34.09442 ends/10cm |
| Pile Density: | 19200 | |
| Size: | 19.69 in x 19.69 in | 50 cm x 50 cm |

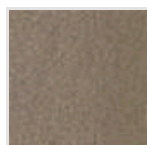
Performance Specifications

| | |
|--|--|
| Indoor Air Quality: | Green Label Plus Certified # GLP0820 |
| Sustainable Carpet Assessment Standard: | NSF-140 Platinum |
| Radiant Panel: | (ASTM E-648) Class 1 |
| Smoke Density: | (ASTM E - 662) |
| Lightfastness: | (AATCC 16 - E) |
| Static: | (AATCC - 134) < 3.0 KV |

Other Colors for Distressed



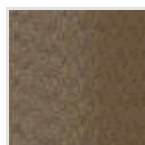
Textured
Color#: 9344



Antique
Color#: 9345



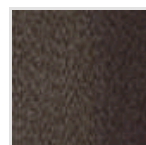
Tarnished
Color#: 9346



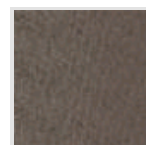
Coarse
Color#: 9347



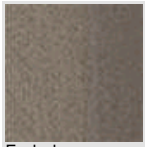
Bleached
Color#: 9348



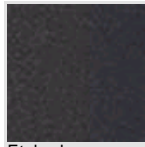
Rustic
Color#: 9349



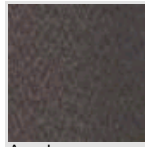
Weathered
Color#: 9350



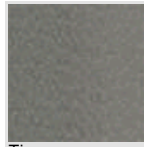
Faded
Color#: 9351



Etched
Color#: 9352



Aged
Color#: 9353



Timeworn
Color#: 9354

All Product Specifications are averages derived from product sample testing and are subject to normal manufacturing tolerances and testing tolerances. "Tufted Yarn Weight" refers to total input weight of yarn used in tufting process, and processes such as tufting and shearing will result in a lower finished yarn weight in purchased carpet. Pile Density stated in the Product Specifications is based on the Tufted Yarn Weight. Product Specifications may be changed without notice as long as product performance is not materially affected.