

Doodle / Purple Passion GlasBac® RE Tile

Style#: 12373

Color#: 102074

Carpet Type: Tile

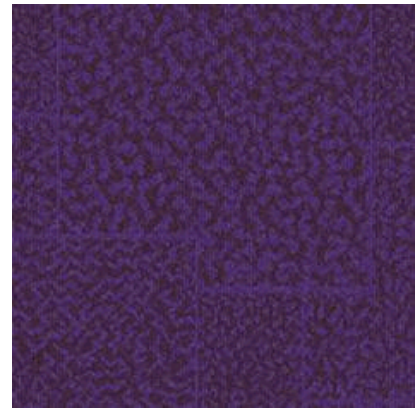
Standard Size: 50 cm x 50 cm (19.69 in x 19.69 in)

Backing Options: GlasBac® RE Tile (50 cm x 50 cm), GlasBac® Tile (50 cm x 50 cm), NexStep® Tile (50 cm x 50 cm), Sheet Goods (2 m)

Layout Options:



MONOLITHIC



Specifications for GlasBac® RE Tile

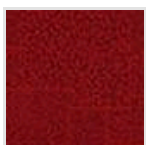
Product Number:	12373102074
Product Construction:	Tufted Cut & Loop
Soil/Stain Protection:	Protekt®
Antimicrobial Treatment:	(AATCC 138 Washed) (AATCC 174 Parts 2&3) Intersept®
Yarn System:	Post-Consumer Content Type 6,6 Nylon
Yarn Manufacturer:	Universal
Dye Method:	100% Solution Dye
Post-Industrial:	40% - 40%
Post-Consumer:	26%
Total Recycled Content:	66% - 66%

Product Specifications	U.S.	Metric
Tufted Yarn Weight:	22 oz/yd ²	746 g/m ²
Machine Gauge:	5/64 in	50.4 ends/10 cm
Pile Height:	.18 in	4.6 mm
Pile Thickness:	.123	3.1
Stitches:	11.83/in	46.57471 ends/10cm
Pile Density:	6439	
Size:	19.69 in x 19.69 in	50 cm x 50 cm

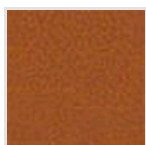
Performance Specifications

Indoor Air Quality:	Green Label Plus Certified #GLP0820
Sustainable Carpet Assessment Standard:	NSF-140 Platinum
Radiant Panel:	(ASTM E-648) Class 1
Smoke Density:	(ASTM E - 662)
Lightfastness:	(AATCC 16 - E)
Static:	(AATCC - 134) < 3.0 KV

Other Colors for Doodle



Radical Red
Color#: 102075



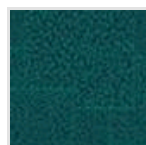
Outrageous Orange
Color#: 102076



Screamin' Yellow
Color#: 102077



Shocking Blue
Color#: 102078



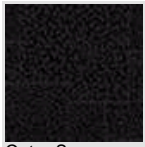
Atomic Aqua
Color#: 102079



Ultra Green
Color#: 102080



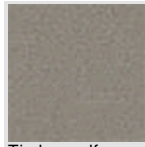
Neon Lime
Color#: 102081



Outer Space
Color#: 102082



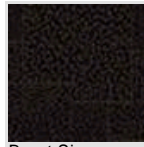
Manatee
Color#: 102083



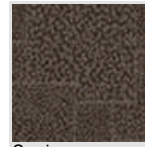
Timberwolf
Color#: 102084



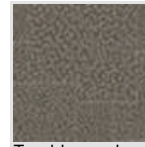
Silver
Color#: 102085



Burnt Sienna
Color#: 102086



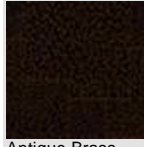
Sepia
Color#: 102087



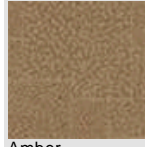
Tumbleweed
Color#: 102088



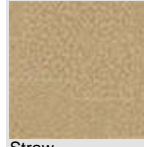
Almond
Color#: 102089



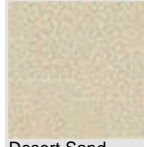
Antique Brass
Color#: 102090



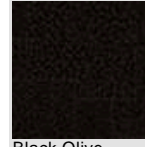
Amber
Color#: 102091



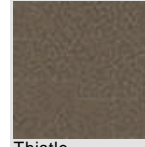
Straw
Color#: 102092



Desert Sand
Color#: 102093



Black Olive
Color#: 102094



Thistle
Color#: 102095



Lemongrass
Color#: 102096



Shadow
Color#: 102097

All Product Specifications are averages derived from product sample testing and are subject to normal manufacturing tolerances and testing tolerances. "Tufted Yarn Weight" refers to total input weight of yarn used in tufting process, and processes such as tufting and shearing will result in a lower finished yarn weight in purchased carpet. Pile Density stated in the Product Specifications is based on the Tufted Yarn Weight. Product Specifications may be changed without notice as long as product performance is not materially affected.