

Essence / Deep Water GlasBac® Tile

Style#: 13910

Color#: 7819

Carpet Type: Tile

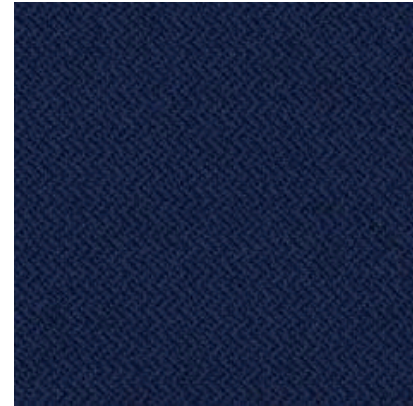
Standard Size: 50 cm x 50 cm (19.69 in x 19.69 in)

Backing Options: GlasBac® RE Tile (50 cm x 50 cm), GlasBac® Tile (50 cm x 50 cm)

Layout Options:



MONOLITHIC



Specifications for GlasBac® Tile

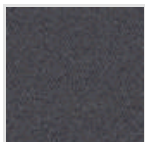
Product Number:	139107819
Product Construction:	Tufted Textured Loop
Soil/Stain Protection:	Protekt®
Antimicrobial Treatment:	(AATCC 138 Washed) (AATCC 174 Parts 2&3) Intersept®
Yarn System:	Type 6 Nylon
Yarn Manufacturer:	Aquafil
Dye Method:	100% Solution Dye
Post-Industrial:	56% - 56%
Post-Consumer:	5%
Total Recycled Content:	61% - 61%

Product Specifications	U.S.	Metric
Tufted Yarn Weight:	22 oz/yd ²	746 g/m ²
Machine Gauge:	1/10 in	39.4 ends/10 cm
Pile Height:	.15 in	3.8 mm
Pile Thickness:	.1	2.5
Stitches:	10.16/in	39.99992 ends/10cm
Pile Density:	7920	
Size:	19.69 in x 19.69 in	50 cm x 50 cm

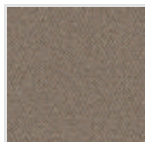
Performance Specifications

Indoor Air Quality:	Green Label Plus Certified #GLP0820
Sustainable Carpet Assessment Standard:	NSF-140 Gold
Radiant Panel:	(ASTM E-648) Class 1
Smoke Density:	(ASTM E - 662)
Lightfastness:	(AATCC 16 - E)
Static:	(AATCC - 134) < 3.0 KV

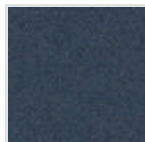
Other Colors for Essence



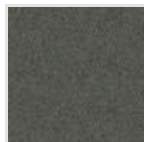
Aqua
Color#: 7820



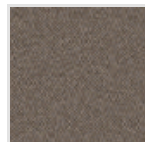
Spa Grey
Color#: 7821



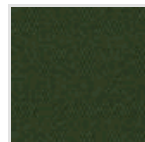
Warm Springs
Color#: 7822



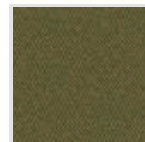
Aloe Vera
Color#: 7823



River Rock
Color#: 7824



Lotus
Color#: 7825



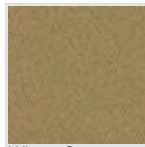
Willow
Color#: 7826



Sage
Color#: 7827



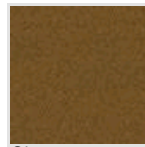
Ginkgo
Color#: 7828



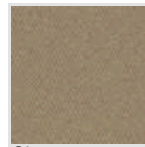
Wheat Grass
Color#: 7829



Eucalyptus
Color#: 7830



Ginger
Color#: 7831



Ginseng
Color#: 7832



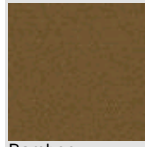
White Sage
Color#: 7833



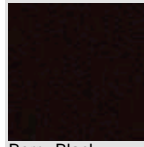
Indian Spice
Color#: 7834



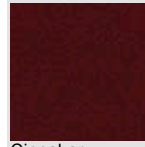
Hawthorn
Color#: 7835



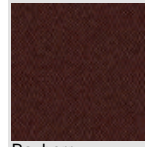
Bamboo
Color#: 7836



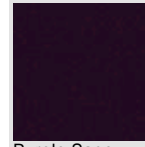
Berry Black
Color#: 7837



Cinnabar
Color#: 7838



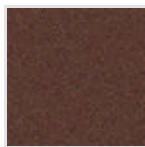
Bayberry
Color#: 7839



Purple Sage
Color#: 7840



Plum Berry
Color#: 7841



Rosemary
Color#: 7842

All Product Specifications are averages derived from product sample testing and are subject to normal manufacturing tolerances and testing tolerances. "Tufted Yarn Weight" refers to total input weight of yarn used in tufting process, and processes such as tufting and shearing will result in a lower finished yarn weight in purchased carpet. Pile Density stated in the Product Specifications is based on the Tufted Yarn Weight. Product Specifications may be changed without notice as long as product performance is not materially affected.