

Frequency II / Intervaltest GlasBac® Tile

Style#: 14675

Color#: 9413

Carpet Type: Tile

Standard Size: 50 cm x 50 cm (19.69 in x 19.69 in)



Backing Options: GlasBac® RE Tile (50 cm x 50 cm), GlasBac® Tile (50 cm x 50 cm), NexStep® Tile (50 cm x 50 cm)

Layout Options:



NON-DIRECTIONAL



Specifications for GlasBac® Tile

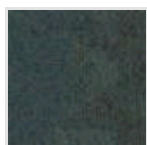
Product Number:	146759413
Product Construction:	Tufted Textured Loop
Soil/Stain Protection:	Protekt®
Antimicrobial Treatment:	(AATCC 138 Washed) (AATCC 174 Parts 2&3) Intersept®
Yarn System:	Type 6,6 Nylon
Yarn Manufacturer:	Universal
Dye Method:	64% Solution Dye ; 36% Yarn Dye
Post-Industrial:	46% - 46%
Post-Consumer:	1%
Total Recycled Content:	47% - 47%

Product Specifications	U.S.	Metric
Tufted Yarn Weight:	20 oz/yd ²	678 g/m ²
Machine Gauge:	1/12 in	47.2 ends/10 cm
Pile Height:	.15 in	3.8 mm
Pile Thickness:	.1	2.5
Stitches:	8.33/in	32.79521 ends/10cm
Pile Density:	7200	
Size:	19.69 in x 19.69 in	50 cm x 50 cm

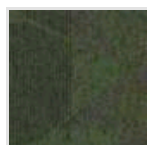
Performance Specifications

Indoor Air Quality:	Green Label Plus Certified #GLP0820
Sustainable Carpet Assessment Standard:	NSF-140 Gold
Radiant Panel:	(ASTM E-648) Class 1
Smoke Density:	(ASTM E - 662)
Lightfastness:	(AATCC 16 - E)
Static:	(AATCC - 134) < 3.0 KV

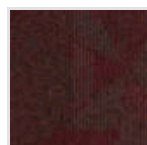
Other Colors for Frequency II



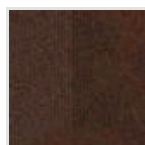
Sequence
Color#: 9414



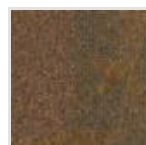
Variable
Color#: 9415



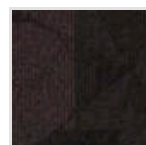
Rhythm
Color#: 9416



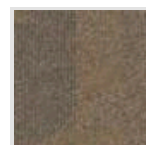
Revolution
Color#: 9417



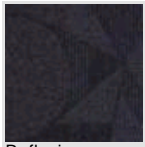
Intermittence
Color#: 9418



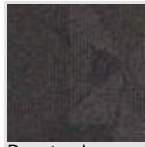
Pulse
Color#: 9419



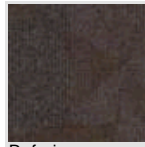
Wavelength
Color#: 9420



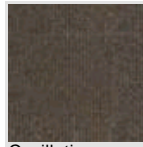
Reflexion
Color#: 9421



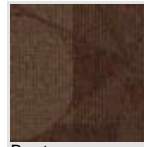
Repetend
Color#: 9422



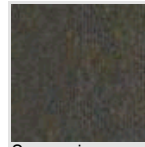
Refrain
Color#: 9423



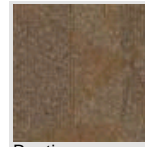
Oscillation
Color#: 9424



Beat
Color#: 9425



Succession
Color#: 9426



Routine
Color#: 9427



Iteration
Color#: 9428

All Product Specifications are averages derived from product sample testing and are subject to normal manufacturing tolerances and testing tolerances. "Tufted Yarn Weight" refers to total input weight of yarn used in tufting process, and processes such as tufting and shearing will result in a lower finished yarn weight in purchased carpet. Pile Density stated in the Product Specifications is based on the Tufted Yarn Weight. Product Specifications may be changed without notice as long as product performance is not materially affected.