

## Geometry II / Figure GlasBac® Tile

**Style#:** 14695

**Color#:** 9943

**Carpet Type:** Tile

**Standard Size:** 50 cm x 50 cm (19.69 in x 19.69 in)

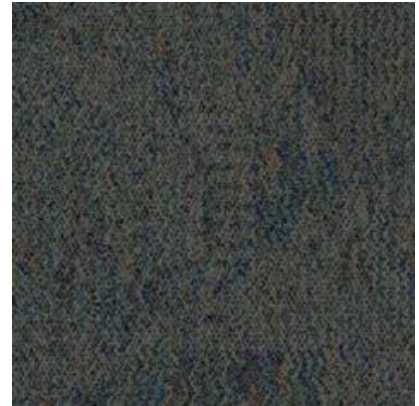


**Backing Options:** GlasBac® RE Tile (50 cm x 50 cm), GlasBac® Tile (50 cm x 50 cm), NexStep® Tile (50 cm x 50 cm)

**Layout Options:**



NON-DIRECTIONAL



### Specifications for GlasBac® Tile

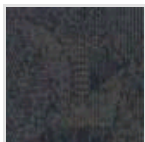
<b>Product Number:</b>	146959943
<b>Product Construction:</b>	Tufted Textured Loop
<b>Soil/Stain Protection:</b>	Protekt <sup>®</sup>
<b>Antimicrobial Treatment:</b>	(AATCC 138 Washed) (AATCC 174 Parts 2&3) Intersept <sup>®</sup>
<b>Yarn System:</b>	Type 6,6 Nylon
<b>Yarn Manufacturer:</b>	Universal
<b>Dye Method:</b>	64% Solution Dye, 36% Yarn Dye
<b>Post-Industrial:</b>	46% - 46%
<b>Post-Consumer:</b>	1%
<b>Total Recycled Content:</b>	47% - 47%

Product Specifications	U.S.	Metric
<b>Tufted Yarn Weight:</b>	18 oz/yd <sup>2</sup>	610 g/m <sup>2</sup>
<b>Machine Gauge:</b>	1/12 in	47.2 ends/10 cm
<b>Pile Height:</b>	.13 in	3.3 mm
<b>Pile Thickness:</b>	.077	2
<b>Stitches:</b>	8/in	31.496 ends/10cm
<b>Pile Density:</b>	8416	
<b>Size:</b>	19.69 in x 19.69 in	50 cm x 50 cm

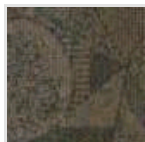
### Performance Specifications

<b>Indoor Air Quality:</b>	Green Label Plus Certified <a href="#">#GLP0820</a>
<b>Sustainable Carpet Assessment Standard:</b>	NSF-140 Gold
<b>Radiant Panel:</b>	(ASTM E-648) Class 1
<b>Smoke Density:</b>	(ASTM E - 662)
<b>Lightfastness:</b>	(AATCC 16 - E)
<b>Static:</b>	(AATCC - 134) < 3.0 KV

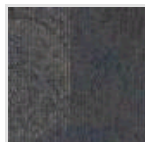
### Other Colors for Geometry II



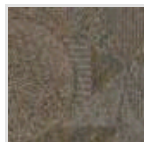
Center  
Color#: 9944



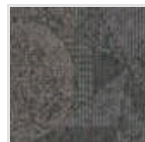
Arc  
Color#: 9945



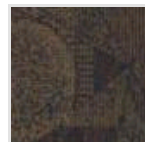
Apex  
Color#: 9946



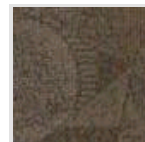
Contour  
Color#: 9947



Shape  
Color#: 9948



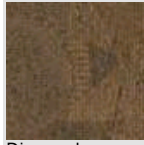
Graphic  
Color#: 9949



Optical  
Color#: 9950



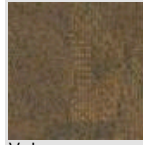
Angular  
Color#: 9951



Diagonal  
Color#: 9952



Volume  
Color#: 9953



Value  
Color#: 9955

All Product Specifications are averages derived from product sample testing and are subject to normal manufacturing tolerances and testing tolerances. "Tufted Yarn Weight" refers to total input weight of yarn used in tufting process, and processes such as tufting and shearing will result in a lower finished yarn weight in purchased carpet. Pile Density stated in the Product Specifications is based on the Tufted Yarn Weight. Product Specifications may be changed without notice as long as product performance is not materially affected.