

Hannover / Flagstone GlasBac® Tile

Style#: 12423

Color#: 6713

Carpet Type: Tile

Standard Size: 50 cm x 50 cm (19.69 in x 19.69 in)

Backing Options: GlasBac® RE Tile (50 cm x 50 cm), GlasBac® Tile (50 cm x 50 cm), NexStep® Tile (50 cm x 50 cm)

Layout Options:



QUARTER
TURN



Specifications for GlasBac® Tile

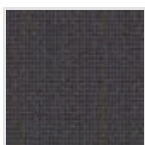
Product Number:	124236713
Product Construction:	Tufted Cut & Loop
Soil/Stain Protection:	Protekt®
Antimicrobial Treatment:	(AATCC 138 Washed) (AATCC 174 Parts 2&3) Intersept®
Yarn System:	Type 6 Nylon
Yarn Manufacturer:	Aquafil
Dye Method:	100% Solution Dye
Post-Industrial:	57% - 57%
Post-Consumer:	5%
Total Recycled Content:	62% - 62%

Product Specifications	U.S.	Metric
Tufted Yarn Weight:	24 oz/yd ²	814 g/m ²
Machine Gauge:	5/64 in	50.4 ends/10 cm
Pile Height:	.16 in	4.1 mm
Pile Thickness:	.153	3.9
Stitches:	9/in	35.433 ends/10cm
Pile Density:	5647	
Size:	19.69 in x 19.69 in	50 cm x 50 cm

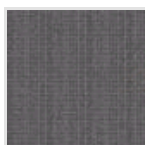
Performance Specifications

Indoor Air Quality:	Green Label Plus Certified #GLP0820
Sustainable Carpet Assessment Standard:	NSF-140 Gold
Radiant Panel:	(ASTM E-648) Class 1
Smoke Density:	(ASTM E - 662)
Lightfastness:	(AATCC 16 - E)
Static:	(AATCC - 134) < 3.0 KV

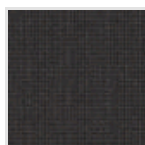
Other Colors for Hannover



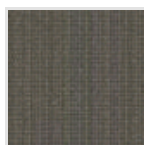
Basalt
Color#: 6714



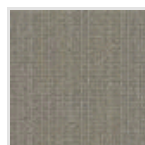
Fossil
Color#: 6715



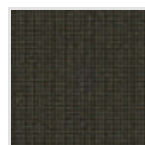
Nimbus
Color#: 6716



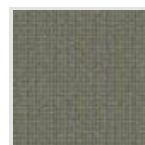
Patina
Color#: 6717



Opal
Color#: 6718



Marsh
Color#: 6719



Sea Glass
Color#: 6720



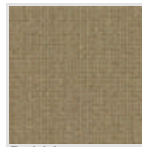
Cirrus
Color#: 6753



Peat
Color#: 6754



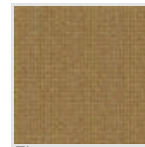
Citron
Color#: 6755



Pebble
Color#: 6756



Acorn
Color#: 6757



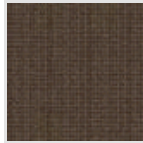
Flax
Color#: 6758



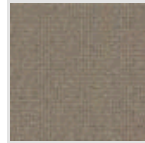
Dune
Color#: 6759



Loam
Color#: 6760



Bark
Color#: 6761



Mushroom
Color#: 6762

All Product Specifications are averages derived from product sample testing and are subject to normal manufacturing tolerances and testing tolerances. "Tufted Yarn Weight" refers to total input weight of yarn used in tufting process, and processes such as tufting and shearing will result in a lower finished yarn weight in purchased carpet. Pile Density stated in the Product Specifications is based on the Tufted Yarn Weight. Product Specifications may be changed without notice as long as product performance is not materially affected.