

## Kenshi II / Kirigami GlasBac® Tile

**Style#:** 14704

**Color#:** 101547

**Carpet Type:** Tile

**Standard Size:** 50 cm x 50 cm (19.69 in x 19.69 in)

**Backing Options:** GlasBac® RE Tile (50 cm x 50 cm), GlasBac® Tile (50 cm x 50 cm), NexStep® Tile (50 cm x 50 cm)

**Layout Options:**



QUARTER  
TURN



### Specifications for GlasBac® Tile

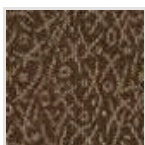
<b>Product Number:</b>	14704101547
<b>Product Construction:</b>	Tufted Textured Loop
<b>Soil/Stain Protection:</b>	Protekt®
<b>Antimicrobial Treatment:</b>	(AATCC 138 Washed) (AATCC 174 Parts 2&3) Intersept®
<b>Yarn System:</b>	Post-Consumer Content Type 6,6 Nylon
<b>Yarn Manufacturer:</b>	Universal
<b>Dye Method:</b>	100% Solution Dye
<b>Post-Industrial:</b>	48% - 48%
<b>Post-Consumer:</b>	2%
<b>Total Recycled Content:</b>	50% - 50%

Product Specifications	U.S.	Metric
<b>Tufted Yarn Weight:</b>	17 oz/yd <sup>2</sup>	576 g/m <sup>2</sup>
<b>Machine Gauge:</b>	1/12 in	47.2 ends/10 cm
<b>Pile Height:</b>	.18 in	4.6 mm
<b>Pile Thickness:</b>	.108	2.7
<b>Stitches:</b>	8.16/in	32.12592 ends/10cm
<b>Pile Density:</b>	5667	
<b>Size:</b>	19.69 in x 19.69 in	50 cm x 50 cm

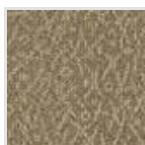
### Performance Specifications

<b>Indoor Air Quality:</b>	Green Label Plus Certified # <a href="#">GLP0820</a>
<b>Sustainable Carpet Assessment Standard:</b>	NSF-140 Gold
<b>Radiant Panel:</b>	(ASTM E-648) Class 1
<b>Smoke Density:</b>	(ASTM E - 662)
<b>Lightfastness:</b>	(AATCC 16 - E)
<b>Static:</b>	(AATCC - 134) < 3.0 KV

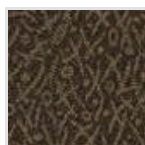
### Other Colors for Kenshi II



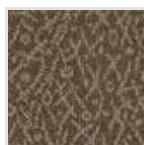
Senryu  
Color#: 101548



Rice Wine  
Color#: 101549



Nori  
Color#: 101550



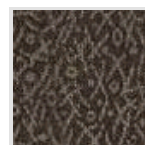
Sake  
Color#: 101551



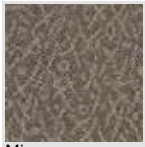
Honshu  
Color#: 101552



Tea Leaves  
Color#: 101553



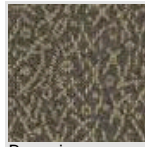
Shoji  
Color#: 101554



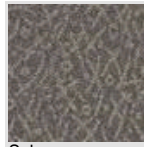
Miso  
Color#: 101555



Intro  
Color#: 101556



Bonsai  
Color#: 101557



Sakura  
Color#: 101558

All Product Specifications are averages derived from product sample testing and are subject to normal manufacturing tolerances and testing tolerances. "Tufted Yarn Weight" refers to total input weight of yarn used in tufting process, and processes such as tufting and shearing will result in a lower finished yarn weight in purchased carpet. Pile Density stated in the Product Specifications is based on the Tufted Yarn Weight. Product Specifications may be changed without notice as long as product performance is not materially affected.