

## Monochrome / Umber GlasBac® RE Tile

**Style#:** 13857

**Color#:** 101800

**Carpet Type:** Tile

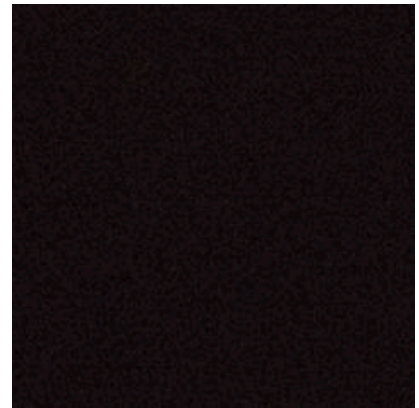
**Standard Size:** 50 cm x 50 cm (19.69 in x 19.69 in)

**Backing Options:** GlasBac® RE Tile (50 cm x 50 cm), GlasBac® Tile (50 cm x 50 cm), NexStep® Tile (50 cm x 50 cm)

**Layout Options:**



MONOLITHIC



### Specifications for GlasBac® RE Tile

<b>Product Number:</b>	13857101800
<b>Product Construction:</b>	Tufted Textured Loop
<b>Soil/Stain Protection:</b>	Protekt®
<b>Antimicrobial Treatment:</b>	(AATCC 138 Washed) (AATCC 174 Parts 2&3) Intersept®
<b>Yarn System:</b>	Post-Consumer Content Type 6 Nylon
<b>Yarn Manufacturer:</b>	Aquafil
<b>Dye Method:</b>	100% Solution Dye
<b>Post-Industrial:</b>	50% - 50%
<b>Post-Consumer:</b>	29%
<b>Total Recycled Content:</b>	79% - 79%

Product Specifications	U.S.	Metric
<b>Tufted Yarn Weight:</b>	24 oz/yd <sup>2</sup>	814 g/m <sup>2</sup>
<b>Machine Gauge:</b>	1/12 in	47.2 ends/10 cm
<b>Pile Height:</b>	.18 in	4.6 mm
<b>Pile Thickness:</b>	.119	3
<b>Stitches:</b>	10.3/in	40.5511 ends/10cm
<b>Pile Density:</b>	7261	
<b>Size:</b>	19.69 in x 19.69 in	50 cm x 50 cm

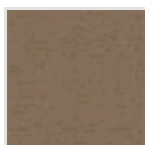
### Performance Specifications

<b>Indoor Air Quality:</b>	Green Label Plus Certified <a href="#">#GLP0820</a>
<b>Sustainable Carpet Assessment Standard:</b>	NSF-140 Platinum
<b>Radiant Panel:</b>	(ASTM E-648) Class 1
<b>Smoke Density:</b>	(ASTM E - 662)
<b>Lightfastness:</b>	(AATCC 16 - E)
<b>Static:</b>	(AATCC - 134) < 3.0 KV

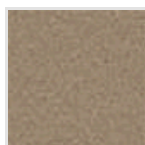
### Other Colors for Monochrome



Mouse  
Color#: 101801



Caraway  
Color#: 101802



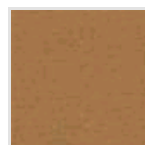
Malt  
Color#: 101803



Brown  
Color#: 101804



Taupe  
Color#: 101805



Castor  
Color#: 101806

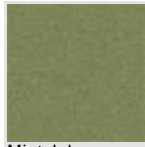


Cream  
Color#: 101807

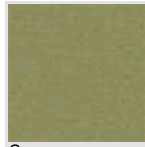
						
Briar Color#: 101808	Chestnut Color#: 101809	Doubloon Color#: 101810	Linen Color#: 101811	Maple Color#: 101812	Honey Color#: 101813	Spun Gold Color#: 101814
						
Morning Glory Color#: 101815	Fire Brick Color#: 101816	Earth Rust Color#: 101817	Persimmon Color#: 101818	Orange Color#: 101819	Wine Berry Color#: 101820	Raspberry Color#: 101821
						
Mauve Color#: 101822	Peach Color#: 101823	Eggplant Color#: 101824	Berry Color#: 101825	Very Berry Color#: 101826	Red Color#: 101827	Legacy Color#: 101828
						
Crocus Color#: 101829	Lilac Haze Color#: 101830	Lilac Color#: 101831	Black Color#: 101832	Seal Color#: 101833	Felt Color#: 101834	Smoke Color#: 101835
						
Navy Color#: 101836	Granite Color#: 101837	Flannel Color#: 101838	Concrete Color#: 101839	Mystified Color#: 101840	Blue Color#: 101841	Flemish Blue Color#: 101842
						
Morning Haze Color#: 101843	Flag Blue Color#: 101844	Medici Blue Color#: 101845	Waterfall Color#: 101846	Nautical Color#: 101847	Antique Blue Color#: 101848	Spa Color#: 101849
						
Juniper Color#: 101850	Aquamarine Color#: 101851	Jungle Color#: 101852	Ocean Color#: 101853	Holly Color#: 101854	Secret Garden Color#: 101855	Yew Color#: 101856



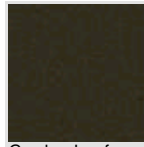
Asparagus  
Color#: 101857



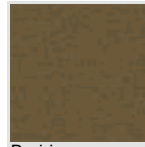
Mint Julep  
Color#: 101858



Grass  
Color#: 101859



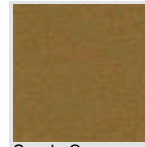
Garden Leaf  
Color#: 101860



Prairie  
Color#: 101861



Artichoke  
Color#: 101862



Sandy Cove  
Color#: 101863

All Product Specifications are averages derived from product sample testing and are subject to normal manufacturing tolerances and testing tolerances. "Tufted Yarn Weight" refers to total input weight of yarn used in tufting process, and processes such as tufting and shearing will result in a lower finished yarn weight in purchased carpet. Pile Density stated in the Product Specifications is based on the Tufted Yarn Weight. Product Specifications may be changed without notice as long as product performance is not materially affected.