

Nagashi II / Kirigami GlasBac® Tile

Style#: 14705

Color#: 101559

Carpet Type: Tile

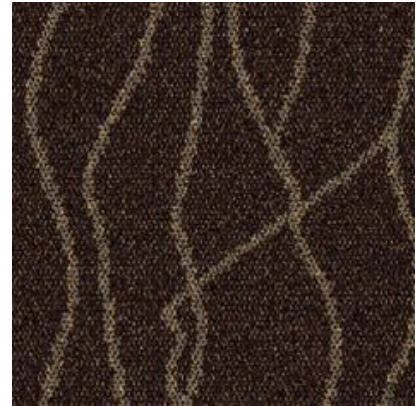
Standard Size: 50 cm x 50 cm (19.69 in x 19.69 in)

Backing Options: GlasBac® RE Tile (50 cm x 50 cm), GlasBac® Tile (50 cm x 50 cm), NexStep® Tile (50 cm x 50 cm)

Layout Options:



QUARTER
TURN



Specifications for GlasBac® Tile

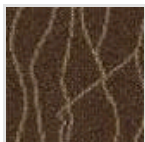
Product Number:	14705101559
Product Construction:	Tufted Textured Loop
Soil/Stain Protection:	Protekt®
Antimicrobial Treatment:	(AATCC 138 Washed) (AATCC 174 Parts 2&3) Intersept®
Yarn System:	Post-Consumer Content Type 6,6 Nylon
Yarn Manufacturer:	Universal
Dye Method:	100% Solution Dye
Post-Industrial:	48% - 48%
Post-Consumer:	2%
Total Recycled Content:	50% - 50%

Product Specifications	U.S.	Metric
Tufted Yarn Weight:	17 oz/yd ²	576 g/m ²
Machine Gauge:	1/12 in	47.2 ends/10 cm
Pile Height:	.18 in	4.6 mm
Pile Thickness:	.108	2.7
Stitches:	8.16/in	32.12592 ends/10cm
Pile Density:	5667	
Size:	19.69 in x 19.69 in	50 cm x 50 cm

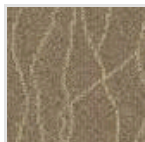
Performance Specifications

Indoor Air Quality:	Green Label Plus Certified # GLP0820
Sustainable Carpet Assessment Standard:	NSF-140 Gold
Radiant Panel:	(ASTM E-648) Class 1
Smoke Density:	(ASTM E - 662)
Lightfastness:	(AATCC 16 - E)
Static:	(AATCC - 134) < 3.0 KV

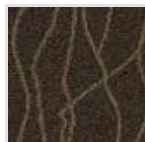
Other Colors for Nagashi II



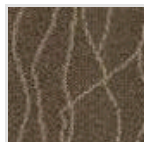
Senryu
Color#: 101560



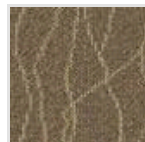
Rice Wine
Color#: 101561



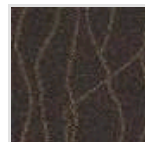
Nori
Color#: 101562



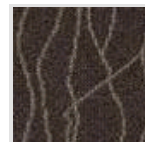
Sake
Color#: 101563



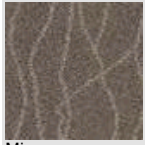
Honshu
Color#: 101564



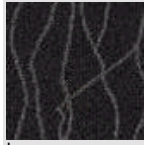
Tea Leaves
Color#: 101565



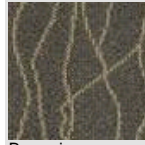
Shoji
Color#: 101566



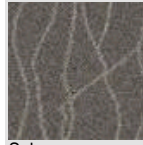
Miso
Color#: 101567



Intro
Color#: 101568



Bonsai
Color#: 101569



Sakura
Color#: 101570

All Product Specifications are averages derived from product sample testing and are subject to normal manufacturing tolerances and testing tolerances. "Tufted Yarn Weight" refers to total input weight of yarn used in tufting process, and processes such as tufting and shearing will result in a lower finished yarn weight in purchased carpet. Pile Density stated in the Product Specifications is based on the Tufted Yarn Weight. Product Specifications may be changed without notice as long as product performance is not materially affected.