

Paint Box Classics / Eggplant GlasBac® Tile

Style#: 14700

Color#: 100946

Carpet Type: Tile

Standard Size: 50 cm x 50 cm (19.69 in x 19.69 in)

Backing Options: GlasBac® RE Tile (50 cm x 50 cm), GlasBac® Tile (50 cm x 50 cm), NexStep® Tile (50 cm x 50 cm), Sheet Goods (2 m)

Layout Options:



QUARTER
TURN



Specifications for GlasBac® Tile

Product Number:	14700100946
Product Construction:	Tufted Tip-Sheared
Soil/Stain Protection:	Protekt [®]
Antimicrobial Treatment:	(AATCC 138 Washed) (AATCC 174 Parts 2&3) Intersept [®]
Yarn System:	Post-Consumer Content Type 6,6 Nylon
Yarn Manufacturer:	Universal
Dye Method:	100% Solution Dye
Post-Industrial:	46% - 46%
Post-Consumer:	2%
Total Recycled Content:	48% - 48%

Product Specifications	U.S.	Metric
Tufted Yarn Weight:	24 oz/yd ²	814 g/m ²
Machine Gauge:	1/12 in	47.2 ends/10 cm
Pile Height:	.18 in	4.6 mm
Pile Thickness:	.149	3.8
Stitches:	10.66/in	41.96842 ends/10cm
Pile Density:	5799	
Size:	19.69 in x 19.69 in	50 cm x 50 cm

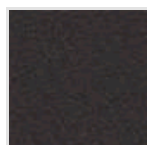
Performance Specifications

Indoor Air Quality:	Green Label Plus Certified # GLP0820
Sustainable Carpet Assessment Standard:	NSF-140 Gold
Radiant Panel:	(ASTM E-648) Class 1
Smoke Density:	(ASTM E - 662)
Lightfastness:	(AATCC 16 - E)
Static:	(AATCC - 134) < 3.0 KV

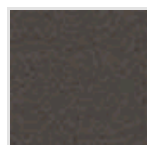
Other Colors for Paint Box Classics



Baltic
Color#: 100947



Charcoal
Color#: 100948



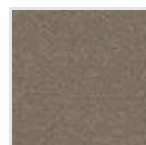
Quarry
Color#: 100949



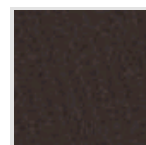
Chesapeake
Color#: 100951



Chestnut
Color#: 100952



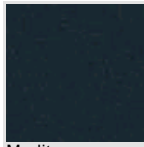
Driftwood
Color#: 100953



Espresso
Color#: 100954



Obsidian
Color#: 100955



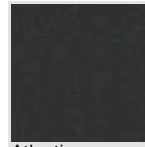
Mediterranean
Color#: 101917



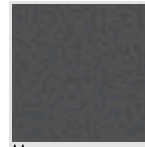
Wren
Color#: 101918



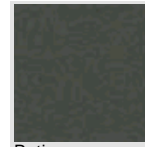
Ink
Color#: 101919



Atlantic
Color#: 101920



Heron
Color#: 101921



Patina
Color#: 101922



Fern
Color#: 101923



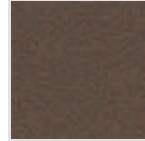
Sienna
Color#: 101924



Magenta
Color#: 101925



Bronze
Color#: 101926



Mushroom
Color#: 101927

All Product Specifications are averages derived from product sample testing and are subject to normal manufacturing tolerances and testing tolerances. "Tufted Yarn Weight" refers to total input weight of yarn used in tufting process, and processes such as tufting and shearing will result in a lower finished yarn weight in purchased carpet. Pile Density stated in the Product Specifications is based on the Tufted Yarn Weight. Product Specifications may be changed without notice as long as product performance is not materially affected.