

S102 / Black GlasBac® RE Tile

Style#: 14241

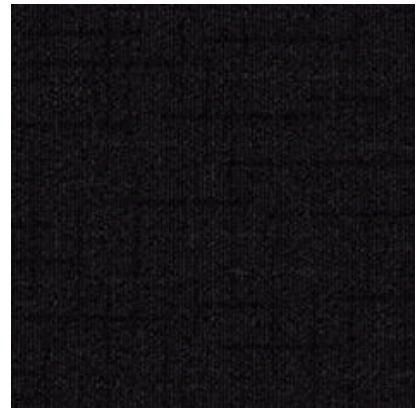
Color#: 9526

Carpet Type: Tile

Standard Size: 50 cm x 50 cm (19.69 in x 19.69 in)

Backing Options: GlasBac® RE Tile (50 cm x 50 cm), GlasBac® Tile (50 cm x 50 cm), Sheet Goods (2 m)

Layout Options:



Specifications for GlasBac® RE Tile

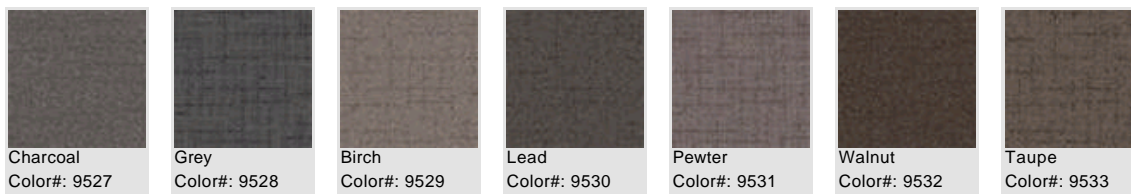
Product Number:	142419526
Product Construction:	Tufted Pattern Loop
Soil/Stain Protection:	Protekt®
Antimicrobial Treatment:	(AATCC 138 Washed) (AATCC 174 Parts 2&3) Intersept®
Yarn System:	Post-Consumer Content Type 6,6 Nylon
Yarn Manufacturer:	Universal
Dye Method:	100% Solution Dye
Post-Industrial:	41% - 41%
Post-Consumer:	27%
Total Recycled Content:	68% - 68%

Product Specifications	U.S.	Metric
Tufted Yarn Weight:	16 oz/yd ²	542 g/m ²
Machine Gauge:	1/10 in	39.4 ends/10 cm
Pile Height:	.14 in	3.6 mm
Pile Thickness:	.086	2.2
Stitches:	11/in	43.307 ends/10cm
Pile Density:	6698	
Size:	19.69 in x 19.69 in	50 cm x 50 cm

Performance Specifications

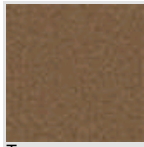
Indoor Air Quality:	Green Label Plus Certified #GLP0820
Sustainable Carpet Assessment Standard:	NSF-140 Platinum
Radiant Panel:	(ASTM E-648) Class 1
Smoke Density:	(ASTM E - 662)
Lightfastness:	(AATCC 16 - E)
Static:	(AATCC - 134) < 3.0 KV

Other Colors for S102

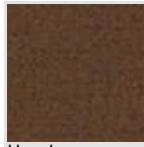




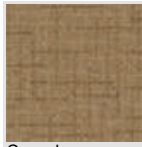
Brown
Color#: 9534



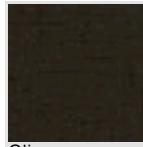
Tan
Color#: 9535



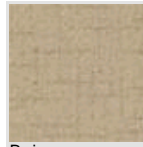
Hazel
Color#: 9536



Camel
Color#: 9537



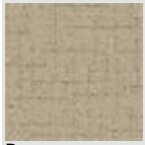
Olive
Color#: 9538



Beige
Color#: 9540



Sage
Color#: 9541



Dove
Color#: 9542

All Product Specifications are averages derived from product sample testing and are subject to normal manufacturing tolerances and testing tolerances. "Tufted Yarn Weight" refers to total input weight of yarn used in tufting process, and processes such as tufting and shearing will result in a lower finished yarn weight in purchased carpet. Pile Density stated in the Product Specifications is based on the Tufted Yarn Weight. Product Specifications may be changed without notice as long as product performance is not materially affected.