

S103 / Black GlasBac® RE Tile

Style#: 14242

Color#: 9626

Carpet Type: Tile

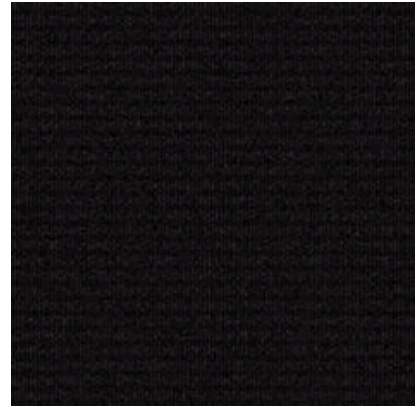
Standard Size: 50 cm x 50 cm (19.69 in x 19.69 in)

Backing Options: GlasBac® RE Tile (50 cm x 50 cm), GlasBac® Tile (50 cm x 50 cm), Sheet Goods (2 m)

Layout Options:



QUARTER
TURN



Specifications for GlasBac® RE Tile

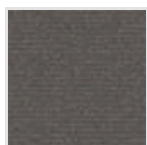
Product Number:	142429626
Product Construction:	Tufted Pattern Loop
Soil/Stain Protection:	Protekt®
Antimicrobial Treatment:	(AATCC 138 Washed) (AATCC 174 Parts 2&3) Intersept®
Yarn System:	Post-Consumer Content Type 6,6 Nylon
Yarn Manufacturer:	Universal
Dye Method:	100% Solution Dyed
Post-Industrial:	41% - 41%
Post-Consumer:	27%
Total Recycled Content:	68% - 68%

Product Specifications	U.S.	Metric
Tufted Yarn Weight:	16 oz/yd ²	542 g/m ²
Machine Gauge:	1/10 in	39.4 ends/10 cm
Pile Height:	.14 in	3.6 mm
Pile Thickness:	.086	2.2
Stitches:	11/in	43.307 ends/10cm
Pile Density:	6698	
Size:	19.69 in x 19.69 in	50 cm x 50 cm

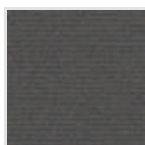
Performance Specifications

Indoor Air Quality:	Green Label Plus Certified #GLP0820
Sustainable Carpet Assessment Standard:	NSF-140 Platinum
Radiant Panel:	(ASTM E-648) Class 1
Smoke Density:	(ASTM E - 662)
Lightfastness:	(AATCC 16 - E)
Static:	(AATCC - 134) < 3.0 KV

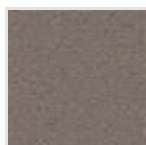
Other Colors for S103



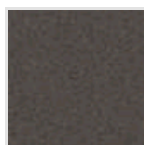
Charcoal
Color#: 9627



Grey
Color#: 9628



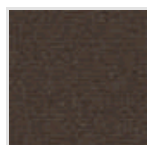
Birch
Color#: 9629



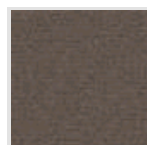
Lead
Color#: 9630



Pewter
Color#: 9631



Walnut
Color#: 9632



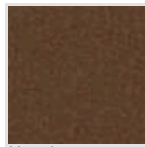
Taupe
Color#: 9633



Brown
Color#: 9634



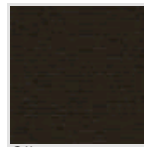
Tan
Color#: 9635



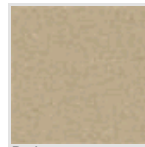
Hazel
Color#: 9636



Camel
Color#: 9637



Olive
Color#: 9638



Beige
Color#: 9639



Sage
Color#: 9640



Dove
Color#: 9641

All Product Specifications are averages derived from product sample testing and are subject to normal manufacturing tolerances and testing tolerances. "Tufted Yarn Weight" refers to total input weight of yarn used in tufting process, and processes such as tufting and shearing will result in a lower finished yarn weight in purchased carpet. Pile Density stated in the Product Specifications is based on the Tufted Yarn Weight. Product Specifications may be changed without notice as long as product performance is not materially affected.