

## S201 / Black GlasBac<sup>®</sup> RE Tile

**Style#:** 14245

**Color#:** 9784

**Carpet Type:** Tile

**Standard Size:** 50 cm x 50 cm (19.69 in x 19.69 in)

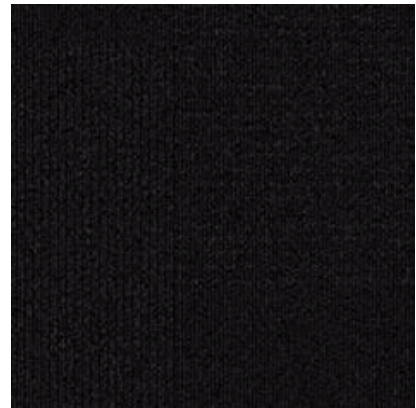


**Backing Options:** GlasBac<sup>®</sup> RE Tile (50 cm x 50 cm), GlasBac<sup>®</sup> Tile (50 cm x 50 cm), Sheet Goods (2 m)

**Layout Options:**



NON-DIRECTIONAL



### Specifications for GlasBac<sup>®</sup> RE Tile

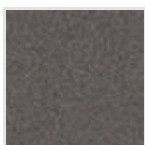
<b>Product Number:</b>	142459784
<b>Product Construction:</b>	Tufted Pattern Loop
<b>Soil/Stain Protection:</b>	Protekt <sup>®</sup>
<b>Antimicrobial Treatment:</b>	(AATCC 138 Washed) (AATCC 174 Parts 2&3) Intersept <sup>®</sup>
<b>Yarn System:</b>	Post-Consumer Content Type 6,6 Nylon
<b>Yarn Manufacturer:</b>	Universal
<b>Dye Method:</b>	100% Solution Dye
<b>Post-Industrial:</b>	41% - 41%
<b>Post-Consumer:</b>	26%
<b>Total Recycled Content:</b>	67% - 67%

Product Specifications	U.S.	Metric
<b>Tufted Yarn Weight:</b>	20 oz/yd <sup>2</sup>	678 g/m <sup>2</sup>
<b>Machine Gauge:</b>	1/10 in	39.4 ends/10 cm
<b>Pile Height:</b>	.19 in	4.8 mm
<b>Pile Thickness:</b>	.142	3.6
<b>Stitches:</b>	12/in	47.244 ends/10cm
<b>Pile Density:</b>	5070	
<b>Size:</b>	19.69 in x 19.69 in	50 cm x 50 cm

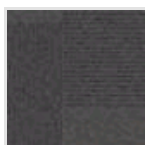
### Performance Specifications

<b>Indoor Air Quality:</b>	Green Label Plus Certified <a href="#">#GLP0820</a>
<b>Sustainable Carpet Assessment Standard:</b>	NSF-140 Platinum
<b>Radiant Panel:</b>	(ASTM E-648) Class 1
<b>Smoke Density:</b>	(ASTM E - 662)
<b>Lightfastness:</b>	(AATCC 16 - E)
<b>Static:</b>	(AATCC - 134) < 3.0 KV

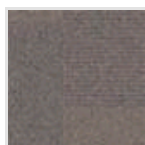
### Other Colors for S201



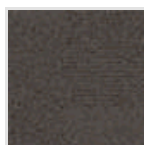
Charcoal  
Color#: 9785



Grey  
Color#: 9786



Birch  
Color#: 9787



Lead  
Color#: 9788



Pewter  
Color#: 9789



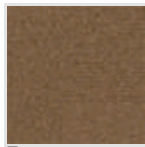
Walnut  
Color#: 9790



Taupe  
Color#: 9791



Brown  
Color#: 9792



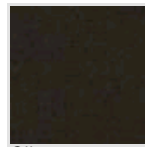
Tan  
Color#: 9793



Hazel  
Color#: 9794



Camel  
Color#: 9795



Olive  
Color#: 9796



Beige  
Color#: 9797



Sage  
Color#: 9798



Dove  
Color#: 9799

All Product Specifications are averages derived from product sample testing and are subject to normal manufacturing tolerances and testing tolerances. "Tufted Yarn Weight" refers to total input weight of yarn used in tufting process, and processes such as tufting and shearing will result in a lower finished yarn weight in purchased carpet. Pile Density stated in the Product Specifications is based on the Tufted Yarn Weight. Product Specifications may be changed without notice as long as product performance is not materially affected.