

## S202 / Black GlasBac® RE Tile

Style#: 14246

Color#: 9800

Carpet Type: Tile

Standard Size: 50 cm x 50 cm (19.69 in x 19.69 in)

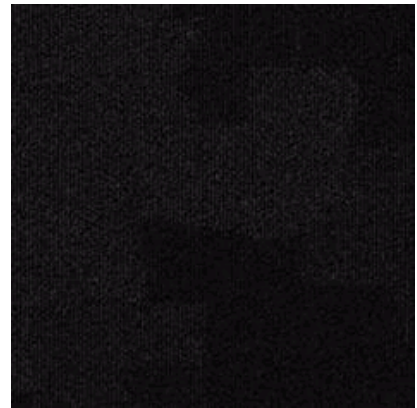


Backing Options: GlasBac® RE Tile (50 cm x 50 cm), GlasBac® Tile (50 cm x 50 cm), Sheet Goods (2 m)

Layout Options:



NON-DIRECTIONAL



### Specifications for GlasBac® RE Tile

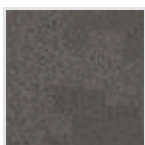
<b>Product Number:</b>	142469800
<b>Product Construction:</b>	Tufted Pattern Loop
<b>Soil/Stain Protection:</b>	Protekt®
<b>Antimicrobial Treatment:</b>	(AATCC 138 Washed) (AATCC 174 Parts 2&3) Intersept®
<b>Yarn System:</b>	Post-Consumer Content Type 6,6 Nylon
<b>Yarn Manufacturer:</b>	Universal
<b>Dye Method:</b>	100% Solution Dye
<b>Post-Industrial:</b>	41% - 41%
<b>Post-Consumer:</b>	26%
<b>Total Recycled Content:</b>	67% - 67%

Product Specifications	U.S.	Metric
<b>Tufted Yarn Weight:</b>	21 oz/yd <sup>2</sup>	712 g/m <sup>2</sup>
<b>Machine Gauge:</b>	1/10 in	39.4 ends/10 cm
<b>Pile Height:</b>	.15 in	3.8 mm
<b>Pile Thickness:</b>	.09	2.3
<b>Stitches:</b>	12/in	47.244 ends/10cm
<b>Pile Density:</b>	8400	
<b>Size:</b>	19.69 in x 19.69 in	50 cm x 50 cm

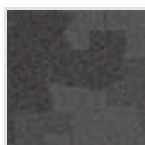
### Performance Specifications

<b>Indoor Air Quality:</b>	Green Label Plus Certified <a href="#">#GLP0820</a>
<b>Sustainable Carpet Assessment Standard:</b>	NSF-140 Platinum
<b>Radiant Panel:</b>	(ASTM E-648) Class 1
<b>Smoke Density:</b>	(ASTM E - 662)
<b>Lightfastness:</b>	(AATCC 16 - E)
<b>Static:</b>	(AATCC - 134) < 3.0 KV

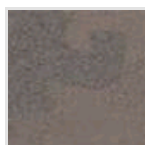
### Other Colors for S202



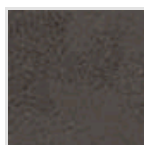
Charcoal  
Color#: 9801



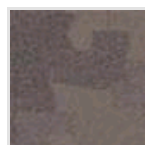
Grey  
Color#: 9802



Birch  
Color#: 9803



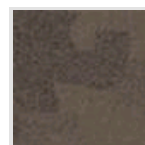
Lead  
Color#: 9804



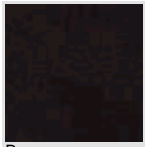
Pewter  
Color#: 9805



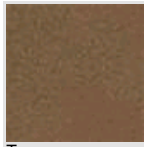
Walnut  
Color#: 9806



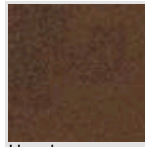
Taupe  
Color#: 9807



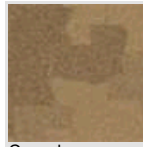
Brown  
Color#: 9808



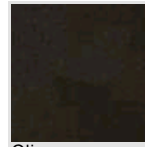
Tan  
Color#: 9809



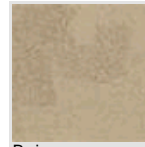
Hazel  
Color#: 9810



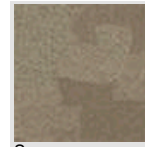
Camel  
Color#: 9811



Olive  
Color#: 9812



Beige  
Color#: 9813



Sage  
Color#: 9814



Dove  
Color#: 9815

All Product Specifications are averages derived from product sample testing and are subject to normal manufacturing tolerances and testing tolerances. "Tufted Yarn Weight" refers to total input weight of yarn used in tufting process, and processes such as tufting and shearing will result in a lower finished yarn weight in purchased carpet. Pile Density stated in the Product Specifications is based on the Tufted Yarn Weight. Product Specifications may be changed without notice as long as product performance is not materially affected.