

## Shizen / Okuni GlasBac® Tile

**Style#:** 16644

**Color#:** 100301

**Carpet Type:** Tile

**Standard Size:** 50 cm x 50 cm (19.69 in x 19.69 in)

**Backing Options:** GlasBac® RE Tile (50 cm x 50 cm), GlasBac® Tile (50 cm x 50 cm), NexStep® Tile (50 cm x 50 cm), Sheet Goods (2 m)

**Layout Options:**



QUARTER  
TURN



### Specifications for GlasBac® Tile

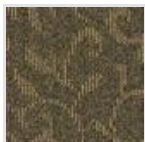
<b>Product Number:</b>	16644100301
<b>Product Construction:</b>	Tufted Textured Loop
<b>Soil/Stain Protection:</b>	Protekt® with DuPont Duratech®
<b>Antimicrobial Treatment:</b>	(AATCC 138 Washed) (AATCC 174 Parts 2&3) Intersept®
<b>Yarn System:</b>	Antron Lumena® Type 6,6 Nylon
<b>Yarn Manufacturer:</b>	Invista®
<b>Dye Method:</b>	100% Solution Dye
<b>Post-Industrial:</b>	43% - 44%
<b>Post-Consumer:</b>	0%
<b>Total Recycled Content:</b>	43% - 44%

Product Specifications	U.S.	Metric
<b>Tufted Yarn Weight:</b>	23 oz/yd <sup>2</sup>	780 g/m <sup>2</sup>
<b>Machine Gauge:</b>	1/12"	47.2 ends/10 cm
<b>Pile Height:</b>	.165 in	4.2 mm
<b>Pile Thickness:</b>	.106	2.7
<b>Stitches:</b>	8.5/in	33.4645 ends/10cm
<b>Pile Density:</b>	7811	
<b>Size:</b>	19.69 in x 19.69 in	50 cm x 50 cm

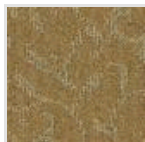
### Performance Specifications

<b>Indoor Air Quality:</b>	Green Label Plus Certified <a href="#">#GLP0820</a>
<b>Sustainable Carpet Assessment Standard:</b>	NSF-140 Gold
<b>Radiant Panel:</b>	(ASTM E - 648) Class 1
<b>Smoke Density:</b>	(ASTM E - 662)
<b>Lightfastness:</b>	(AATCC 16 - E)
<b>Static:</b>	(AATCC - 134) < 3.0 KV

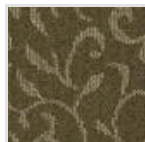
### Other Colors for Shizen



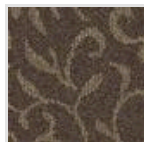
Hashi  
Color#: 100302



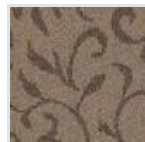
Ginkgo  
Color#: 100303



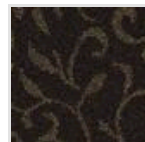
Tomo  
Color#: 100304



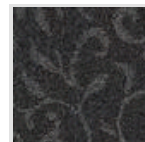
Cha  
Color#: 100305



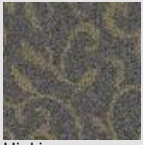
Willow  
Color#: 100306



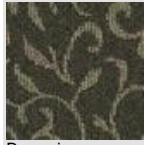
Tea Leaves  
Color#: 100331



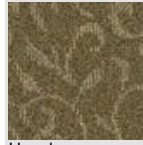
Terrace  
Color#: 100332



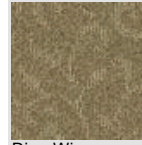
Hiaki  
Color#: 100333



Bonsai  
Color#: 100334



Honshu  
Color#: 100335



Rice Wine  
Color#: 100336

All Product Specifications are averages derived from product sample testing and are subject to normal manufacturing tolerances and testing tolerances. "Tufted Yarn Weight" refers to total input weight of yarn used in tufting process, and processes such as tufting and shearing will result in a lower finished yarn weight in purchased carpet. Pile Density stated in the Product Specifications is based on the Tufted Yarn Weight. Product Specifications may be changed without notice as long as product performance is not materially affected.