

Stroud II / Chiltern GlasBac® Tile

Style#: 13855

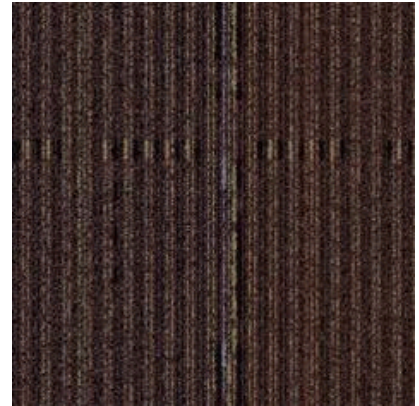
Color#: 101419

Carpet Type: Tile

Standard Size: 50 cm x 50 cm (19.69 in x 19.69 in)

Backing Options: GlasBac® RE Tile (50 cm x 50 cm), GlasBac® Tile (50 cm x 50 cm), NexStep® Tile (50 cm x 50 cm)

Layout Options:



Specifications for GlasBac® Tile

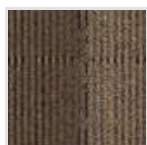
Product Number:	13855101419
Product Construction:	Tufted Textured Loop
Soil/Stain Protection:	Protekt [®]
Antimicrobial Treatment:	(AATCC 138 Washed) (AATCC 174 Parts 2&3) Intersept [®]
Yarn System:	Post-Consumer Content Type 6 Nylon
Yarn Manufacturer:	Aquafil
Dye Method:	100% Solution Dye
Post-Industrial:	56% - 56%
Post-Consumer:	5%
Total Recycled Content:	61% - 61%

Product Specifications	U.S.	Metric
Tufted Yarn Weight:	22 oz/yd ²	746 g/m ²
Machine Gauge:	1/12 in	47.2 ends/10 cm
Pile Height:	.15 in	3.8 mm
Pile Thickness:	.107	2.7
Stitches:	10/in	39.37 ends/10cm
Pile Density:	7402	
Size:	19.69 in x 19.69 in	50 cm x 50 cm

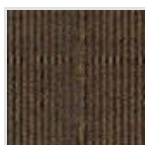
Performance Specifications

Indoor Air Quality:	Green Label Plus Certified #GLP0820
Sustainable Carpet Assessment Standard:	NSF-140 Gold
Radiant Panel:	(ASTM E-648) Class 1
Smoke Density:	(ASTM E - 662)
Lightfastness:	(AATCC 16 - E)
Static:	(AATCC - 134) < 3.0 KV

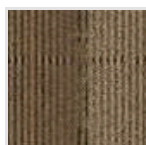
Other Colors for Stroud II



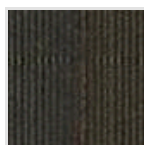
Marlow
Color#: 101420



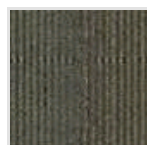
Evesham
Color#: 101421



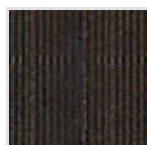
Broughton
Color#: 101422



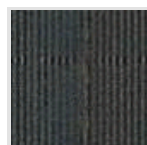
Banbury
Color#: 101423



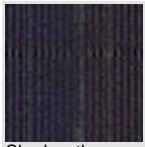
Abingdon
Color#: 101424



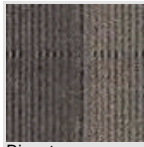
Newbury
Color#: 101425



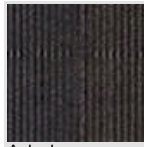
Hempstead
Color#: 101426



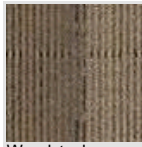
Chedworth
Color#: 101427



Bicester
Color#: 101428



Aylesbury
Color#: 101429



Woodstock
Color#: 101430

All Product Specifications are averages derived from product sample testing and are subject to normal manufacturing tolerances and testing tolerances. "Tufted Yarn Weight" refers to total input weight of yarn used in tufting process, and processes such as tufting and shearing will result in a lower finished yarn weight in purchased carpet. Pile Density stated in the Product Specifications is based on the Tufted Yarn Weight. Product Specifications may be changed without notice as long as product performance is not materially affected.