

06130 Degrees

gradations
SERIES I

 **Tandus**
FLOORING



**43003 Purity and 43004 Boundary
Custom Installation
with Wildflower Tones 32009 Birch
and 32011 Willow Oak**

06130 Degrees

gradations
SERIES I

 Tandus
FLOORING



43007 Black Light
Custom Installation



 **Tandus**
FLOORING

43007 Black Light and
43005 Gray Scale
Quarter Turn Installation



43007 Black Light
Random Installation



 **Tandus**
FLOORING

43007 Black Light
Horizontal Ashlar Installation



43007 Black Light
Horizontal Ashlar Installation
with 43010 Radiation Inserts

06130 Degrees

- 06131 - 1 Degree
- 06132 - 2 Degrees
- 06133 - 5 Degrees
- 06134 - x Degrees

Degrees

is a series of 4 different gradation intervals within a color scheme. Each tile has different rising and falling of step movements.



43001 Light Tint - 1 Degree



2 Degrees



5 Degrees



x Degrees



43002 Illumination - 1 Degree



2 Degrees



5 Degrees



x Degrees



43003 Purity - 1 Degree



2 Degrees



5 Degrees



x Degrees

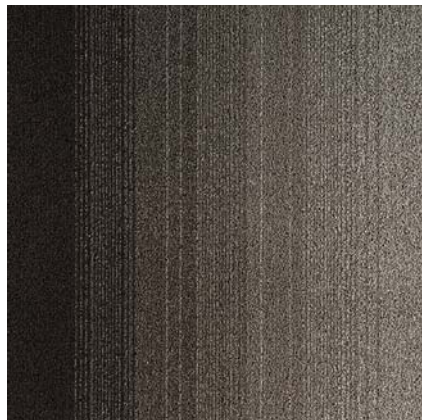
Coordinates: Wildflower Tones

06130 Degrees

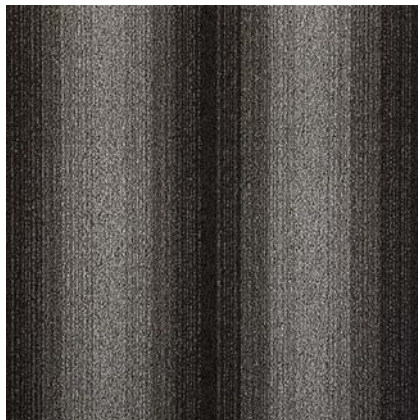
- 06131 - 1 Degree
- 06132 - 2 Degrees
- 06133 - 5 Degrees
- 06134 - x Degrees

Degrees

is a series of 4 different gradation intervals within a color scheme. Each tile has different rising and falling of step movements.



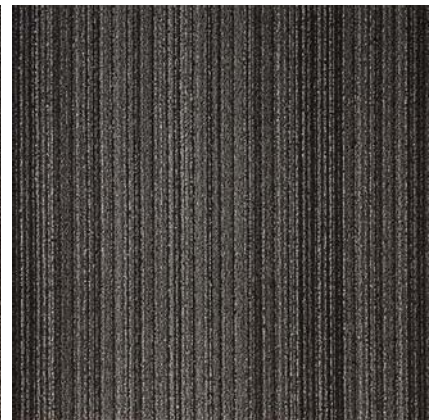
43004 Boundary - 1 Degree



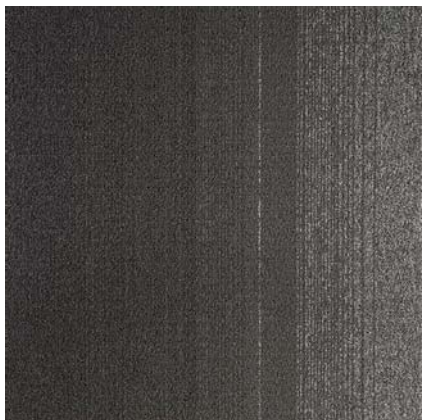
2 Degrees



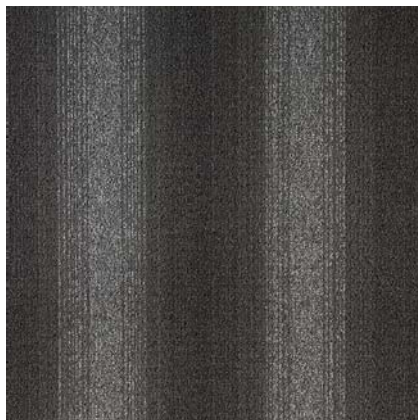
5 Degrees



x Degrees



43005 Gray Scale - 1 Degree



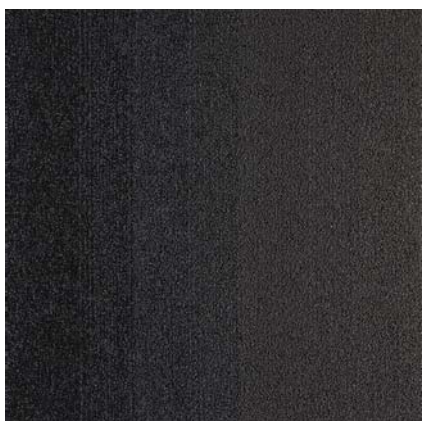
2 Degrees



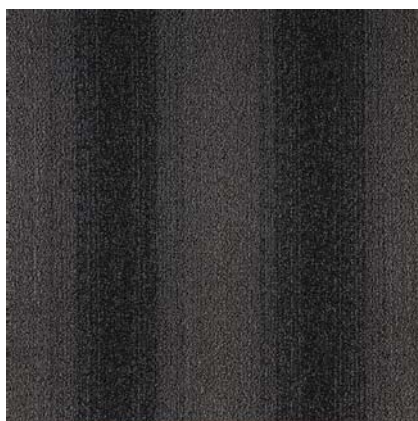
5 Degrees



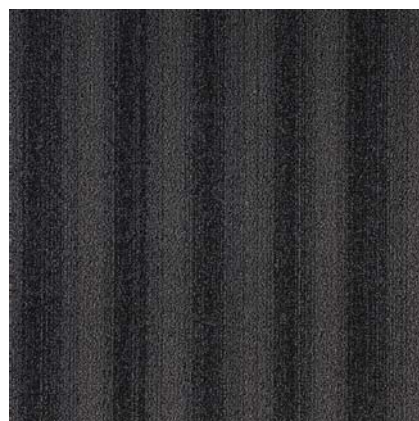
x Degrees



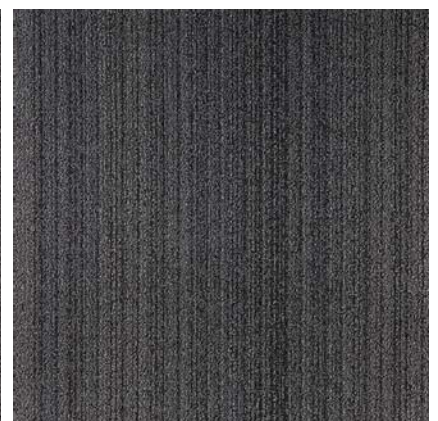
43006 Hues - 1 Degree



2 Degrees



5 Degrees



x Degrees

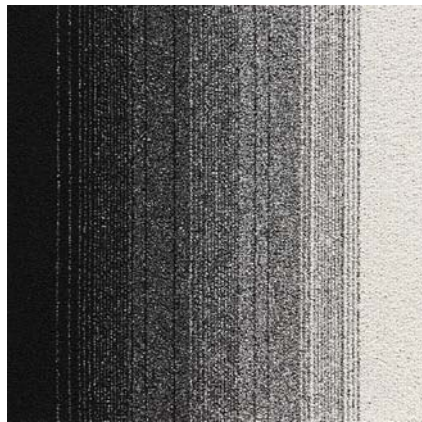
Coordinates: Wildflower Tones

06130 Degrees

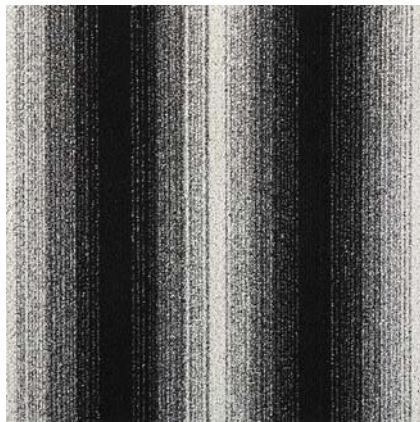
- 06131 - 1 Degree
- 06132 - 2 Degrees
- 06133 - 5 Degrees
- 06134 - x Degrees

Degrees

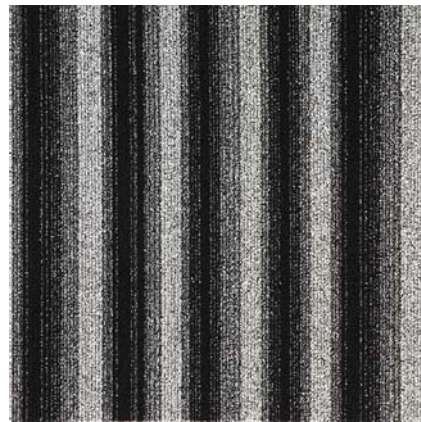
is a series of 4 different gradation intervals within a color scheme. Each tile has different rising and falling of step movements.



43007 Black Light - 1 Degree



2 Degrees



5 Degrees



x Degrees



43008 Color Spaces - 1 Degree



2 Degrees



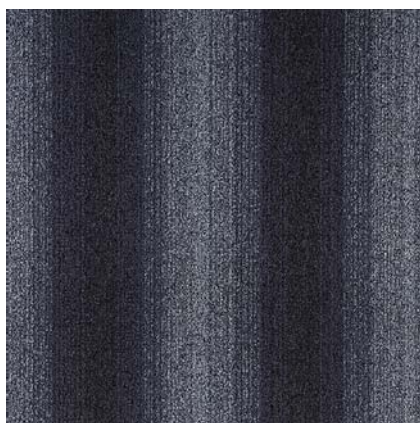
5 Degrees



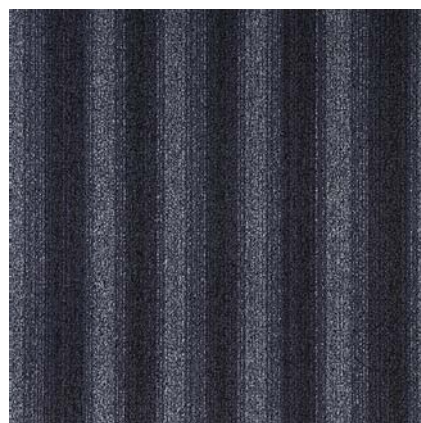
x Degrees



43009 Stellar - 1 Degree



2 Degrees



5 Degrees



x Degrees

Coordinates: Wildflower Tones, Wildflower Accents

06130 Degrees

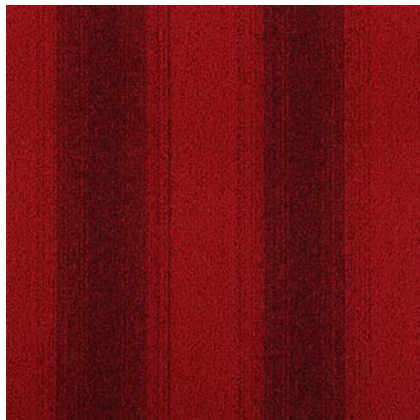
- 06131 - 1 Degree
- 06132 - 2 Degrees
- 06133 - 5 Degrees
- 06134 - x Degrees

Degrees

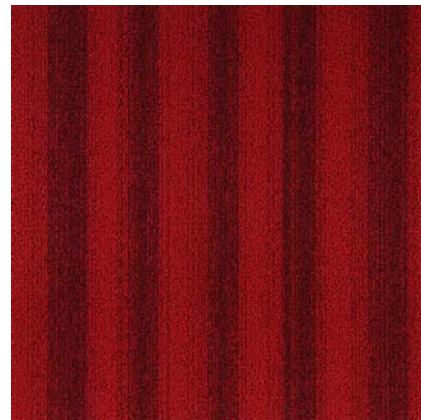
is a series of 4 different gradation intervals within a color scheme. Each tile has different rising and falling of step movements.



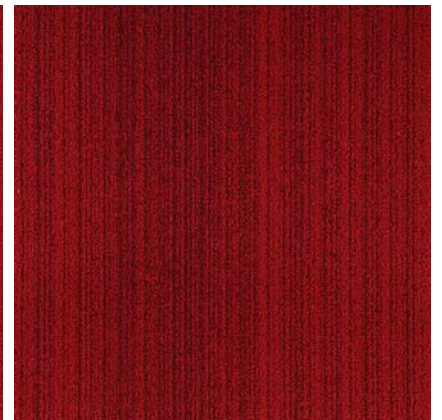
43010 Radiation - 1 Degree



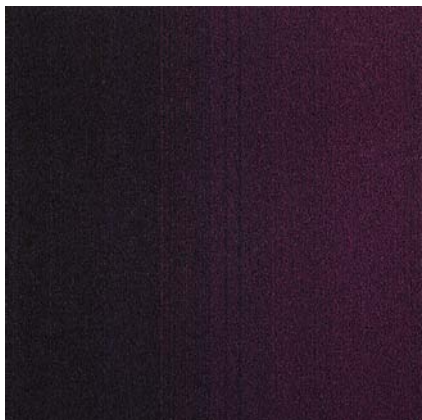
2 Degrees



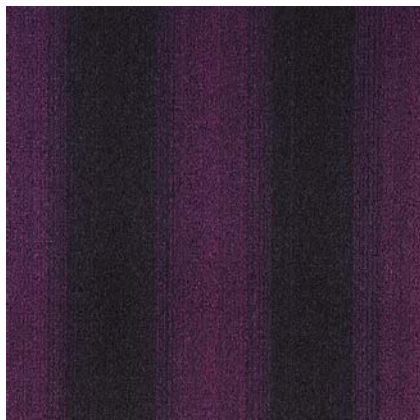
5 Degrees



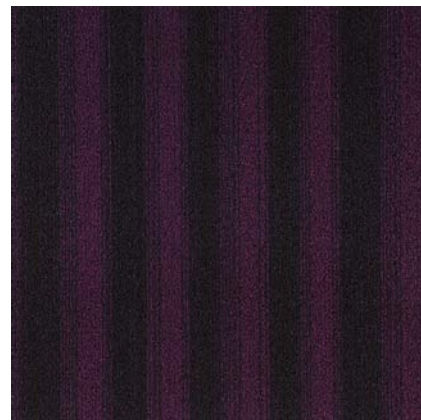
x Degrees



43011 Saturate - 1 Degree



2 Degrees



5 Degrees



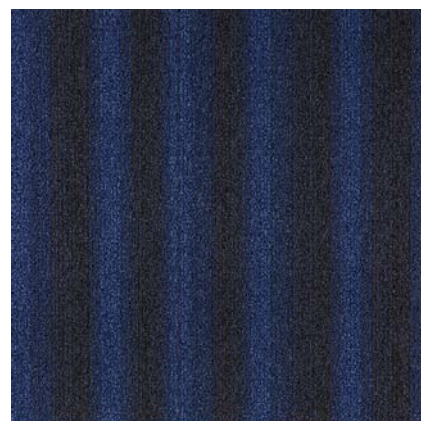
x Degrees



43012 Chroma - 1 Degree



2 Degrees



5 Degrees



x Degrees

Coordinates: Wildflower Accents

06130 Degrees



 **Tandus**
FLOORING

PRODUCT INFORMATION

Product Size	500 mm x 500 mm (19.7" x 19.7")
Construction	Textured Loop
Gauge	1/13 (50.4 rows/10 cm)
Fiber System	TDX [®] Nylon
Density Factor	7,054 oz/yd ³ UM44D
Dye Method	Solution Dyed
Total Product Weight	4,147 g/m ² ± 5%
Pile Height Average	2.7 mm ASTM D-418
Soil Resistance	Ensure
Indoor Air Quality	All Tandus products comply with CRI Green Label Plus Standards ID: #GLP5288. Passes GB 18587-2201
Backing	ECOBOND [™] Recycled Content Backing
Recycled Content	Contains approx. 22% overall recycled content including a min.20% post-consumer content.
Surface Flammability	Passes CPSC FF 1-70 ASTM D-2859
Flooring Radiant Panel	Class I (Mean average CRF: 0.45 watts/cm ² or higher) ASTM E-648
Electrostatic Propensity	3.0 kV or lower AATCC 134
Colorfastness to Light	≥4 after 100 hours AATCC 16E
Fluorine	Minimum 500 ppm - Minimum 400 ppm after two hot water extractions CRI TM-102
Recycling:	[CERTIFIED] All vinyl products, when recovered, are 100% recyclable



PRODUCT NOTES:

1. Product specifications are derived from averages resulting from normal manufacturing tolerances in yarn, fiber, temperature, humidity and color. Product specifications may vary within normal industry and standardised testing tolerances.
2. These specifications reflect mean averages based upon tests of production runs of this carpet style by independent laboratories. A range of variances is implicit in the testing process. Furthermore, the standard test methods established to derive the specifications lack a degree of precision and repeatability; therefore, individual test results on the actual carpet purchased may differ from the specifications above.
3. Colors may vary slightly from dye lot to dye lot.
4. Backing or other materials may be changed without prior notice when shortages occur or when technological advancements become available which provide for improvement of the product's performance.
5. All ECOBOND[™] products are 100% recyclable.

WARRANTY

Limited 15 years non-prorated surface wear, static, delamination, edge ravel, zippering and backing resiliency loss. See warranty for details.
Contact the Tandus Representative nearest you for detailed specifications, limited warranty and sample requests.

AsiaSamples@tandus.com
tandus.com

South China 86.21.6405.3578
Hong Kong 852.8203.8330

North China 86.10.8532.5820
India 91.80.3241.6204

Suzhou 86.512.6283.2669
Singapore 65.6346.1585

Guangzhou 86.20.8451.6737
US 800.248.2878