

# 05175 EXPLORER

*Explorer* offers a dense, low profile product that gives customers a blend of attractive styling, outstanding performance, and competitive pricing. Available in a variety of colorations, *Explorer's* intricate multi-coloured palette presents an exciting aesthetic for various installations, ranging from crisp and brilliant shades to organic earth tones.

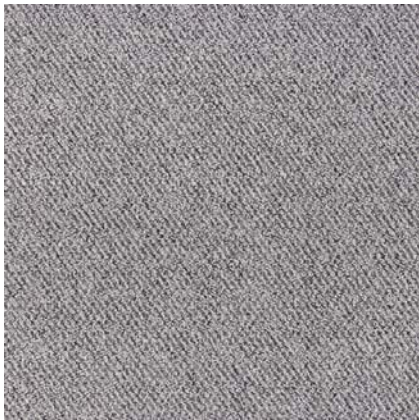
 **Tandus**  
FLOORING



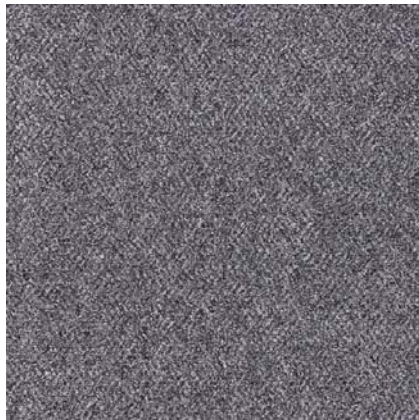
25013 Kalahari  
Monolithic Installation

# 05175 EXPLORER

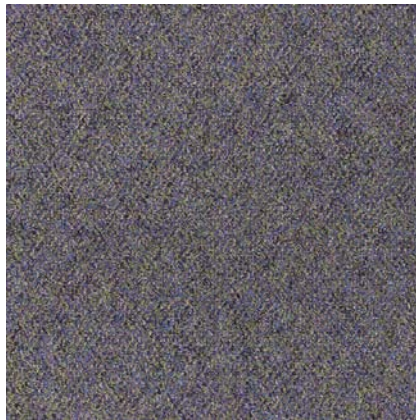
*Explorer* offers a dense, low profile product that gives customers a blend of attractive styling, outstanding performance, and competitive pricing. Available in a variety of colorations, *Explorer's* intricate multi-coloured palette presents an exciting aesthetic for various installations, ranging from crisp and brilliant shades to organic earth tones.



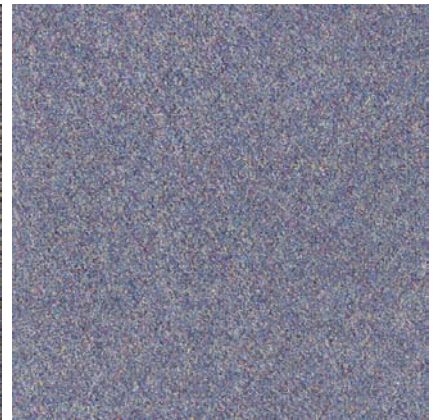
25001 Northern Fog



25003 Lunar Gray



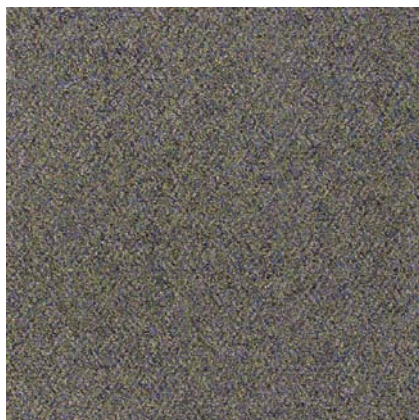
25008 Blue Mountain



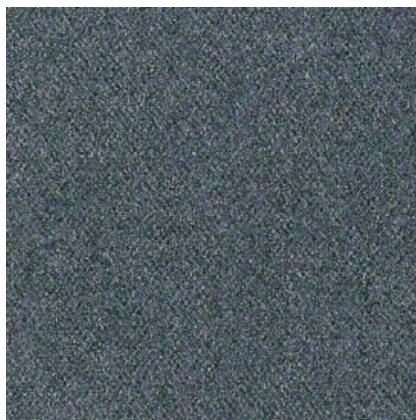
25012 Seafarer



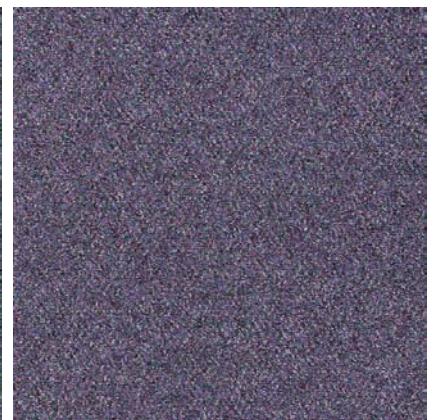
25017 Sandstorm



25013 Kalahari

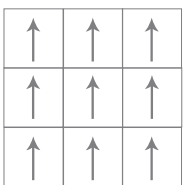


25010 Oregon Forest



25016 Lost Horizon

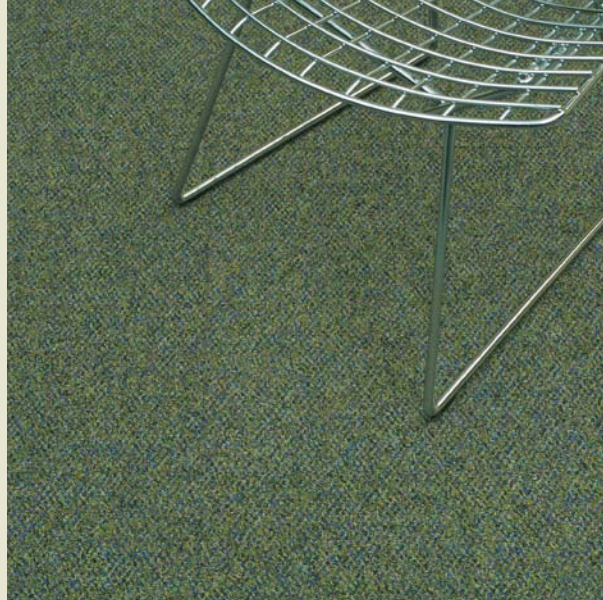
## Installation Instructions:



Monolithic

*Coordinates: Expedition, Wayfarer, Epic*

# 05175 EXPLORER



## PRODUCT INFORMATION

<b>Product Size</b>	500 mm x 500 mm (19.7" x 19.7")		
<b>Construction</b>	Textured Loop		
<b>Gauge</b>	1/13 (50.4 rows/10 cm)		
<b>Fiber System</b>	100% TDX <sup>®</sup> Nylon		
<b>Density Factor</b>	8,129 oz/yd <sup>3</sup>	UM44D	
<b>Dye Method</b>	Solution Dyed		
<b>Total Product Weight</b>	4,295g/m <sup>2</sup> ± 5%		
<b>Pile Height Average</b>	2.8 mm	ASTM D-418	
<b>Soil Resistance</b>	Ensure		
<b>Indoor Air Quality</b>	All Tandus products comply with CRI Green Label Plus Standards ID: #GLP5288. Passes GB 18587-2201		
<b>Backing</b>	ECOBOND <sup>™</sup> Recycled Content Backing		
<b>Recycled Content</b>	Contains approx. 32% overall recycled content including a min.30% post-consumer content.		
<b>Surface Flammability</b>	Passes CPSC FF 1-70	ASTM D-2859	
<b>Flooring Radiant Panel</b>	Class I (Mean average CRF: 0.45 watts/cm <sup>2</sup> or higher)	ASTM E-648	
<b>Electrostatic Propensity</b>	3.0 kV or lower	AATCC 134	
<b>Colourfastness to Light</b>	≥4 after 100 hours	AATCC 16E	
<b>Fluorine</b>	Minimum 500 ppm - Minimum 400 ppm after two hot water extractions	CRI TM-102	
<b>Recycling:</b>	[CERTIFIED] All vinyl products, when recovered, are 100% recyclable		



## PRODUCT NOTES:

1. Product specifications are derived from averages resulting from normal manufacturing tolerances in yarn, fiber, temperature, humidity and colour. Product specifications may vary within normal industry and standardised testing tolerances.
2. These specifications reflect mean averages based upon tests of production runs of this carpet style by independent laboratories. A range of variances is implicit in the testing process. Furthermore, the standard test methods established to derive the specifications lack a degree of precision and repeatability; therefore, individual test results on the actual carpet purchased may differ from the specifications above.
3. Colours may vary slightly from dye lot to dye lot.
4. Backing or other materials may be changed without prior notice when shortages occur or when technological advancements become available which provide for improvement of the product's performance.
5. All ECOBOND<sup>™</sup> products are 100% recyclable.

## WARRANTY

Limited 15 years non-prorated surface wear, static, delamination, edge ravel, zipping and backing resiliency loss. See warranty for details. Contact the Tandus Representative nearest you for detailed specifications, limited warranty and sample requests.