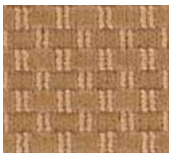


Adirondack II



117 Saddle
16-1324 TPX, 15-1213 TPX



555 Night Sky
18-0201 TPX, 17-1506 TPX



646 Spruce
17-0610 TPX, 18-0510 TPX



686 Evergreen
19-0618 TPX, 17-1312 TPX



727 Cross Country
15-1306 TPX, 16-1324 TPX



772 Rustic
16-1407 TPX, 17-1312 TPX



828 Lodge
15-1215 TPX



858 Wilderness
18-0617 TPX, 17-1327 TPX



878 Explore
18-0928 TPX, 18-5203 TPX



959 Campfire
18-0510 TPX, 18-1018 TPX

PRODUCT SPECIFICATIONS

Style Name Adirondack II
 Product Type Broadloom
 Construction Woven
 Surface Appearance Textured Patterned Cut and Loop
 Nylon Type Ultron® Nylon, Type 6,6
 Pile Weight 36.0 oz. per sq. yd. (1221 g/m²)
 Pile Thickness228" (5.79 mm)
 Dye Method Skein Dyed
 Protective Treatment Sentry Plus
 Density 5,684
 Weight Density 204,624
 Primary Backing Not Applicable
 Backing Foundation Interlaced Into Pile
 Secondary Backing None

Pattern Repeat 1" (W) x 1" (L)
 Width 12' (3.66 m)
 Flammability ASTM E 648 Class 1 (Glue Down)
 Smoke Density ASTM E 662 Less than 450
 Static Propensity AATCC-134 Under 3.5 KV
 IAQ Green Label Plus..... 3802
 CRI Rating Severe Traffic
 Pitch 216 (315 ends per meter)
 RPI 10.0 (39.37 per 10 cm)
 Warranties: Lifetime Limited Woven Wear Warranty, Lifetime Static