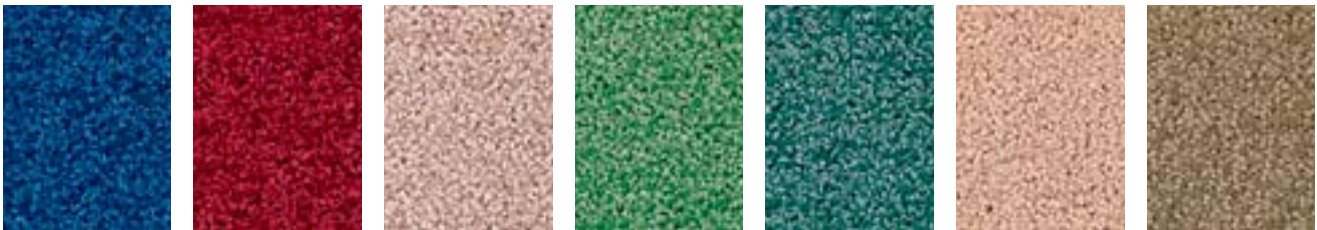




Coordination EcoFlex Modular



8545 Actual

8383 Applicable

8718 Arrange

8655 Attach

8646 Border

8738 Combine

8658 Common

▶
COLORWAY CONTINUED ON NEXT PAGE
▶



8238 Complete

8828 Concur

8936 Connect

8585 Correlate

8899 Definite

8556 Equate

8878 Exact

PRODUCT SPECIFICATIONS

Style Name..... Coordination Modular EcoFlex
 Product Type..... Modular
 Construction Tufted
 Surface Appearance..... Level Solid Cut and Loop
 Nylon Type..... Colorstrand® SD Nylon
 Gauge 1/10 (39.37 rows per 10 cm)
 Pile Weight..... 26.0 oz. per sq. yd. (882 g/m²)
 Pile Thickness..... .108" (2.74 mm)
 Stitches Per Inch 11.0 (38.58 per 10 cm)
 Dye Method..... Solution Dyed
 Protective Treatment..... Sentry Plus
 Density 8,667
 Weight Density..... 225,342
 Primary Backing..... Non Woven Synthetic
 Backing Foundation..... Not Applicable

Secondary Backing EcoFlex Modular System
 Pattern Repeat..... Not Applicable
 Size..... 24" X 24" (.6096 m X .6096 m)
 Flammability ASTM E 648 Class 1 (Glue Down)
 Smoke Density ASTM E 662 Less Than 450
 Static Propensity..... AATCC-134 Under 3.5 KV
 IAQ Green Label 44622771
 IAQ Green Label Plus..... 2771
 CRI Rating..... Heavy Traffic
 Warranties: Lifetime Limited Modular Warranty, Lifetime Limited
 Colorfastness To Light, 10 Year Limited Colorfastness To Atmospheric
 Contaminants, 10 Year Stain Warranty, Lifetime Static



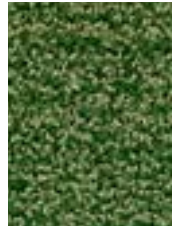
8868 Fasten



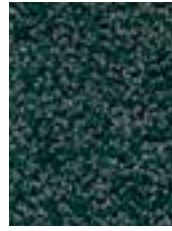
8821 Fit



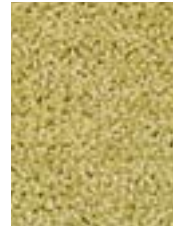
8628 Fusing



8656 Goes With



8985 Harmonize



8611 In Cahoots



8566 Inset



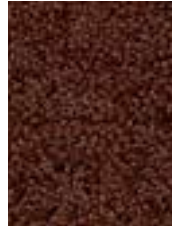
8252 Linking



8822 Match Up



8989 Mingle



8898 Mix



8696 Organize



8262 Pair



8695 Pertinent



8978 Pool



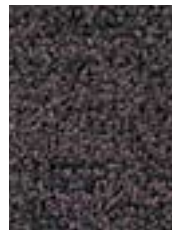
8555 Relate



8343 Relevant



8333 Same As



8979 Share



8121 Side by Side



8388 Suitable



8536 Sure Fit



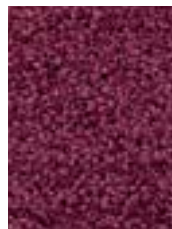
8519 Take Part



8253 This One



8939 Unite



8484 Usable