



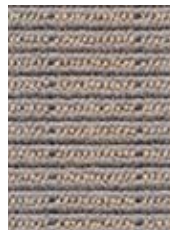
HighLine



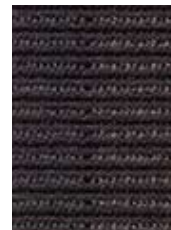
249 Grand Central Station



314 Union Square



549 Empire State



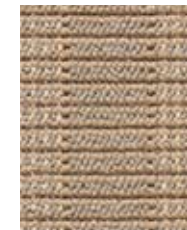
595 The Metropolitan



649 Greenwich Village



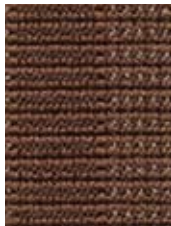
717 Chelsea



736 Broadway



878 Brooklyn Bridge



898 Radio City



989 Rockefeller

PRODUCT SPECIFICATIONS

STYLE NAME .....	HighLine
PRODUCT TYPE .....	Broadloom
CONSTRUCTION .....	Woven
SURFACE APPEARANCE .....	Textured Patterned Cut & Loop
NYLON TYPE .....	Ultron® Nylon, Type 6,6
PILE WEIGHT .....	34.0 oz. per sq. yd. (1153 g/m <sup>2</sup> )
PILE THICKNESS .....	.144" (3.66 mm)
DYE METHOD .....	Skein Dyed
PROTECTIVE TREATMENT .....	Sentry Plus
DENSITY .....	8,500
WEIGHT DENSITY .....	289,000
PRIMARY BACKING .....	Not Applicable
BACKING FOUNDATION .....	Interlaced Into Pile
SECONDARY BACKING .....	None

PATTERN REPEAT .....	8" (W) x .50" (L)
WIDTH .....	12' (3.66 m)
FLAMMABILITY .....	ASTM E 648 Class 1 (Glue Down)
SMOKE DENSITY .....	ASTM E 662 Less than 450
STATIC PROPENSITY .....	AATCC-134 Under 3.5 KV
IAQ GREEN LABEL PLUS .....	4952
PITCH .....	216 (315 ends per meter)
RPI .....	9.5 (37.40 per 10 cm)
CRI RATING .....	Heavy Traffic
WARRANTIES .....	Lifetime Limited Woven Wear Warranty, Lifetime Static