



Quillen II



249 Grand Central Station



314 Union Square



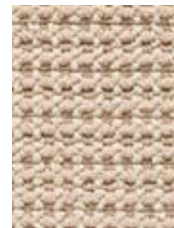
549 Empire State



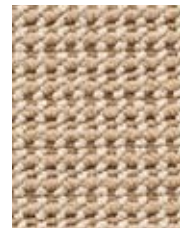
595 The Metropolitan



649 Greenwich Village



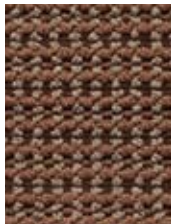
717 Chelsea



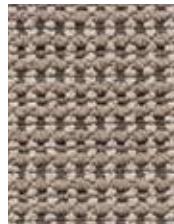
736 Broadway



878 Brooklyn Bridge



898 Radio City



989 Rockefeller

PRODUCT SPECIFICATIONS

STYLE NAME ..... Quillen II  
 PRODUCT TYPE ..... Broadloom  
 CONSTRUCTION ..... Woven  
 SURFACE APPEARANCE ..... Textured Patterned Cut & Loop  
 NYLON TYPE ..... Ultron® Nylon, Type 6,6  
 PILE WEIGHT ..... 34.0 oz. per sq. yd. (1153 g/m2)  
 PILE THICKNESS ..... .187" (4.75 mm)  
 DYE METHOD ..... Skein Dyed  
 PROTECTIVE TREATMENT ..... Sentry Plus  
 DENSITY ..... 6,545  
 WEIGHT DENSITY ..... 222,530  
 PRIMARY BACKING ..... Not Applicable  
 BACKING FOUNDATION ..... Interlaced Into Pile  
 SECONDARY BACKING ..... None

PATTERN REPEAT ..... .375" (W) x .375" (L)  
 WIDTH ..... 12' (3.66 m)  
 FLAMMABILITY ..... ASTM E 648 Class 1 (Glue Down)  
 SMOKE DENSITY ..... ASTM E 662 Less than 450  
 STATIC PROPENSITY ..... AATCC-134 Under 3.5 KV  
 IAQ GREEN LABEL PLUS ..... 4952  
 PITCH ..... 216 (315 ends per meter)  
 RPI ..... 9.3 (36.61 per 10 cm)  
 CRI RATING ..... Heavy Traffic  
 WARRANTIES ..... Lifetime Limited Woven Wear Warranty,  
 Lifetime Static