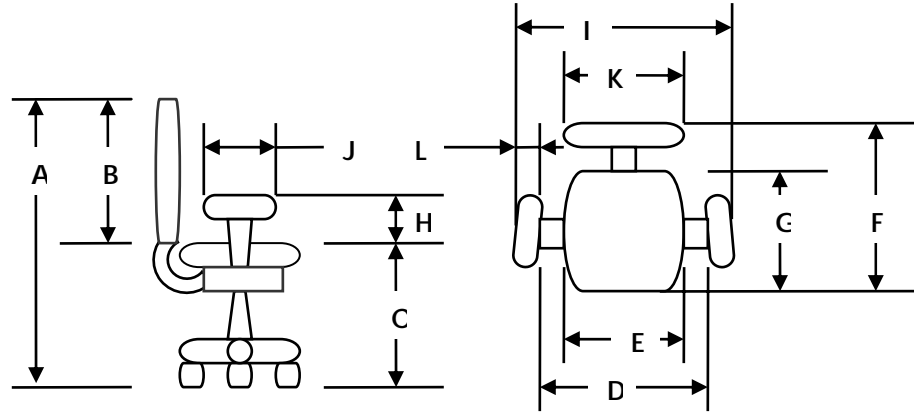




# 2594 Contour Task Chair Standard Specifications



## Measurements:

|                                |               |
|--------------------------------|---------------|
| A. Total Height                | 34.5" – 43.5" |
| B. Back Height                 | 16" – 19"     |
| C. Seat Height                 | 19" – 24"     |
| D. Width Between Arm Pads      | 17.5" – 21.5" |
| E. Seat Width                  | 21"           |
| F. Total Depth                 | 24" – 26"     |
| G. Seat Depth                  | 20"           |
| H. Arm Height from top of seat | 8" – 11"      |
| I. Total Width                 | 26.5 – 30.5"  |
| J. Arm Pad Length              | 11.5"         |
| K. Back Width                  | 18"           |
| L. Arm Pad Width               | 4.5"          |

**Weight Limit:** 250 lbs.

## Standard Construction:

**Back and Seat Frame:** 10 ply curved plywood

**Five Star Base:** Patented, solid injection-molded glass reinforced nylon resin with die cast metal bushing and beveled "step" inside the hub

**Control Mechanism:** HRPO Hot Rolled Steel meets or exceeds ANSI BIFMA, BS5459 PART 2 (formerly FIRA) and AFRDI standards

**Arms:** Injection-molded glass reinforced nylon resin with steel inset

**Foam:** HR foam

**Casters:** Twin wheel all nylon construction, steel axle and fastening, meets/exceeds ANSI/BIFMA standards. Optional urethane tread for hard floors

**Gas lift:** Pneumatic 350 Newton Force 5" of travel, meets/exceeds ANSI/BIFMA requirements