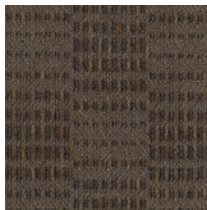


Cubism | 7483

Modular



### Colorways



1256  
Charcoal



1257  
Canvas



1258  
Gesso



1259  
Wash



1261  
Emulsion



1262  
Paintbrush



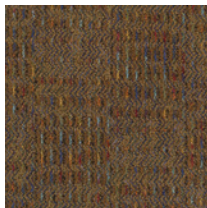
1263  
Acrylics



1265  
Oils



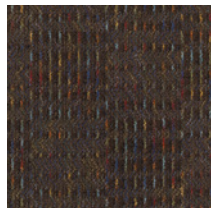
1269  
Subject



1270  
Glaze



1271  
Chalk



1272  
Gouache



1273  
Watercolors

### Product Specifications

<b>Construction</b>	Textured Patterned Loop
<b>Backing</b>	Nexus® Modular
<b>Dye Method</b>	Beck Dyed
<b>Nylon Fiber Type</b>	Ultron® 6,6 Prismatic
<b>Face Weight</b>	24 oz./sy (949 grams/m <sup>2</sup> )
<b>Pile Density</b>	8,498 oz./sy (315.11 kg/m <sup>3</sup> )
<b>Pattern Repeat</b>	N/A
<b>Gauge</b>	1/12 (4.72 rows/cm)
<b>Stitches Per Inch</b>	11 stitches/in (4.33 stitches/cm)
<b>Standard Size</b>	24" x 24" (60.96 cm x 60.96 cm)
<b>Lifetime Warranties</b>	Protection from Moisture Penetration, Protection from Delamination Failure, Dimensional Stability, Tuft Bind Strength (edge ravel, yarn pulls, zipping), Fiber Performance for Wear, Fiber Performance for Static

### Environmental Specifications & Tests

<b>Sustainable Carpet Assessment Standard</b>	N/A
<b>Indoor Air Quality</b>	GLP 9670
<b>Total Recycled Content</b>	14%-19%
<b>Pill Test</b>	Yes
<b>Flooring Radiant Panel</b>	Class 1
<b>Smoke Density</b>	Less than 450 flaming (ASTM E 662)
<b>Static Test</b>	Less than 3 kv (AATCC-134)
<b>Lightfastness</b>	Yes
<b>ADA Compliance</b>	Compliant For Accessible Routes

### Special Treatments

<b>ProTex® (Soil Release)</b>	Yes
<b>ProSept® (Antimicrobial)</b>	Optional

### Coordinating Products

<b>Art &amp; Soul Collection</b>	Impressionism, Surrealism
----------------------------------	---------------------------

### Installation Methods

<b>Installation Methods</b>	Quarter Turn, Monolithic, Ashlar
-----------------------------	----------------------------------



\*This product requires a minimum to order.  
Please contact your Sales Representative for details.