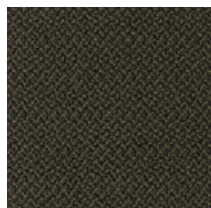
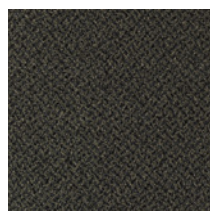


Fuse | 3530

Broadloom



Colorways

1450
Mingle1451
Meld1452
Blend1453
Unite1454
Combine1455
Join1456
Meet

Product Specifications

Construction	Patterned Loop
Backing	PremierBac® Plus
Dye Method	Solution Dyed
Nylon Fiber Type	Encore® SD Ultima® (with recycled content)
Face Weight	20 oz./sy (678 grams/m ²)
Pile Density	8,360 oz./sy (310.18 kg/m ³)
Pattern Repeat	3/4" w x 2" l approx. (1.9 cm x 5.08 cm)
Gauge	1/10 (3.94 rows/cm)
Stitches Per Inch	11.5 stitches/in (4.53 stitches/cm)
Standard Size	12 ft (3.66 m)
Lifetime Warranties	Protection from Delamination Failure, Tuft Bind Strength (edge ravel, yarn pulls, zipping), Fiber Performance for Wear, Fiber Performance for Static, Colorfastness to Light and Atmospheric Contaminants, Stain Removal

Environmental Specifications & Tests

Sustainable Carpet Assessment Standard	NSF Gold
Indoor Air Quality	GLP 5055
Total Recycled Content	13%-24%
Pill Test	Yes
Flooring Radiant Panel	Class 1
Smoke Density	Less than 450 flaming (ASTM E 662)
Static Test	Less than 3 kv (AATCC-134)
Lightfastness	Yes
ADA Compliance	Compliant For Accessible Routes

Special Treatments

ProTex® (Soil Release)	Yes
ProSept® (Antimicrobial)	Optional
Stain/Bleach Resistant	Yes

Coordinating Products

Coordinates Collection	Coalesce, Collaborate, Impact, Mix, Merge
-------------------------------	---



Advantage!
www.gsaadvantage.gov

Goods to Go
Quick Ship Goods