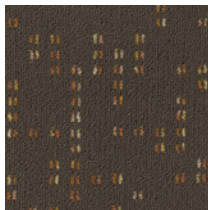


Highrise | 6219

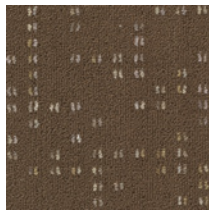
Broadloom



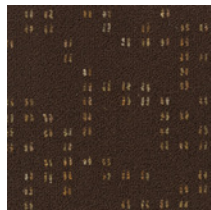
Colorways



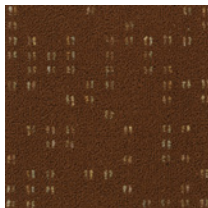
1304
Harvard Square



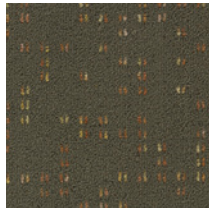
1305
Statue Square



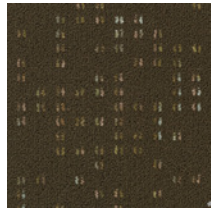
1307
Dam Square



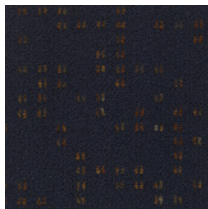
1308
Old Market Square



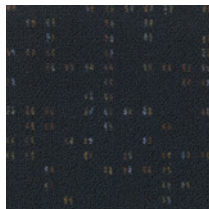
1309
Revolution Square



1310
Union Square



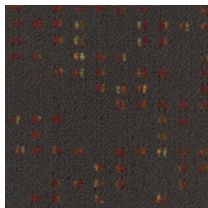
1311
Siam Square



1312
Churchill Square



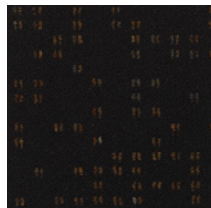
1313
Taylor Square



1314
Red Square



1315
Jackson Square



1316
Republic Square

Product Specifications

Construction	Patterned Loop
Backing	PremierBac® Plus
Dye Method	Solution/Yarn Dyed
Nylon Fiber Type	Encore® BCF (with recycled content)
Face Weight	20 oz./sy (678 grams/m ²)
Pile Density	7552 oz./sy (280.2 kg/m ³)
Pattern Repeat	24" w x 24" l approx. (61 cm x 61 cm)
Gauge	1/12 (4.72 rows/cm)
Stitches Per Inch	13 stitches/in (5.12 stitches/cm)
Standard Size	12 ft (3.66 m)
Lifetime Warranties	Protection from Delamination Failure, Tuft Bind Strength (edge ravel, yarn pulls, zipping), Fiber Performance for Wear, Fiber Performance for Static

Environmental Specifications & Tests

Sustainable Carpet Assessment Standard	NSF Gold
Indoor Air Quality	GLP 5055
Total Recycled Content	13%-24%
Pill Test	Yes
Flooring Radiant Panel	Class 1
Smoke Density	Less than 450 flaming (ASTM E 662)
Static Test	Less than 3 kv (AATCC-134)
Lightfastness	Yes
ADA Compliance	Compliant For Accessible Routes

Special Treatments

ProTex® (Soil Release)	Yes
ProSept® (Antimicrobial)	Optional

Coordinating Products

Location³ Collection	City Blocks, Concrete Jungle
--	------------------------------

