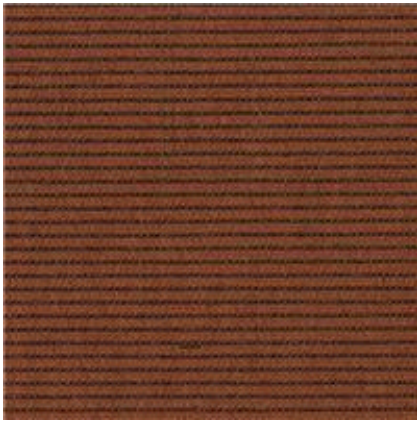


BENTLEY PRINCE STREET



| Specifications | Pure Element | Pure Element |
|-----------------------|---------------------------------------------------|------------------------------------------------|
| Style Number | 8PM190630R | 8PM190630R |
| Product Construction | Woven | Woven |
| Fiber | Bentley Prince Street 80%/20% Wool/Nylon blend | Bentley Prince Street 80%/20% Wool/Nylon blend |
| Dye Method | Piece Dye | Piece Dye |
| Soil/Stain Protection | Protekt® | Protekt® |
| Antimicrobial | Intersept® | Intersept® |
| Secondary Backing | High PerformancePC™ | |
| Yarn Weight | 19 oz/yd ² | 644 g/m ² |
| Machine Gauge | | |
| Pile Height | | |
| -High | | |
| -Medium | | |
| -Low | | |
| Stitches: | 10 /in | 39.37 ends/10 cm |
| Pile Density | 9958 | |
| Total Thickness | .157 | 3.9878 |
| Size | 12 ft 6 in | 3.810 m |
| Pattern Repeat | 3/16 in (L) | .4762 cm (L) |
| Radiant Panel | Passes Class 1 (ASTM E-648) Critical Radiant Flux | |
| Smoke Density | Dm corrected | |
| Static | (AATCC - 134) < 3.5 KV | |
| Flammability | Passes Methenamine Pill Test (DOC-FF1-70) | |
| Backing Options | Prestige PlusRC 100™,High PerformancePC™ | |

Please inquire about product warranties for specific backing options. Patterned carpet may require special attention by the installer to assure a suitable match, and must be addressed in the original labor quotation. The shearing process may result in a small loss of yarn weight.

Product specifications are subject to normal manufacturing tolerances and may be changed without notice provided performance is not adversely affected. Slight variations in color among different production lots are normal and should be considered in the overall installation plan. Products are covered by manufacturer's written warranty only. All other warranties, including without limitation any implied warranties of merchantability or fitness for a particular purpose, are hereby disclaimed. Contact your sales representative for written warranty information. Made in USA. Warning: Unauthorized reproduction of this carpet design constitutes copyright infringement. © 2007 Bentley Prince Street, Inc.