

shaw contract group®

decor tile
collection: Lush
Life

tile specifications

style name	decor tile	
style number	59390	
construction	multi-level pattern cut/loop	
fiber	eco solution q@nylon	
dye method	100% solution dyed	
	english	metric

pattern repeat	none	
tufted weight	28.0	949.36 g/m ²
gauge	1/12	47.24 per 10cm
stitches per inch	10.0	39.37 per 10cm
finished pile thickness	0.110	2.79 mm
total thickness	0.305	7.75 mm
average density	9164	339.80 kg/m ³
product size	24" x 24"	60.96 cm x 60.96 cm
primary backing	synthetic	
secondary backing	ecoworx® tile	
protective treatments	ssp® shaw soil protection	

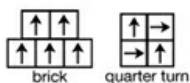
testing

radiant panel	class I
nbs smoke	less than 450
electrostatic propensity	less than 3.5 kv

warranties

lifetime commercial limited

installation method



coordinating products

affluence tile, riche tile, joie, verve, vitae, wisdom

environmental certification

green label plus certification number glp9968
nsf140 platinum
cradle to cradle silver certified



Specifications are subject to nominal manufacturing variances.
Material supply and/or manufacturing processes may necessitate changes without notice.

shawcontractgroup.com | 1 800.257.7429