

DESCRIPTION

Low brightness 6" aperture cross blade for use with 26W, 32W or 42W Triple Twin Tube 4-pin compact fluorescent lamps for below ceiling installation. The cross blade reflector provides superior shielding. Reflector trim eliminates brightness at higher angles. Standard features include low iridescent finish on all reflectors. Venting ensures maximum lamp life and lumen output. Open downlight, lens, and open wall wash trims are interchangeable within the same housing.

Catalog #		Type
Project		
Comments		Date
Prepared by		

SPECIFICATION FEATURES

Reflector

Clear upper Alzak® reflector for maximum light output. Positive reflector mounting, without tools, pulls trim tight to ceiling. Lower spun parabolic reflector with 90° louvers, .050 thick aluminum in a variety of Alzak® finishes.

Trim Ring Options

Self flanged or molded white trim ring.

Socket Connector

One piece die cast aluminum connection allows venting for maximum thermal performance.

Housing Construction

Galvanized steel plaster ring accommodates up to 1" ceiling thickness.

Conduit Fittings

Die cast screw tight connectors.

Rotary Lock Socket

4 pin GX24q3/4 base with fatigue free stainless steel lamp spring ensures positive lamp retention.

Electronic Ballast

Electronic ballast provides full light output and rated lamp life. Provides flicker free and noise free operation and starting. End of lamp life protection is standard.

Labels

cULus listed, damp label, IBEW union made.



C6RH142 C6IH142 6181

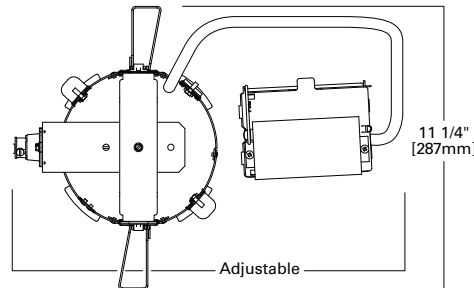
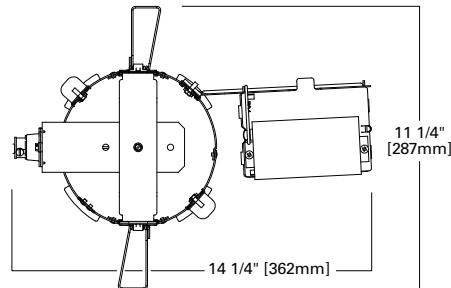
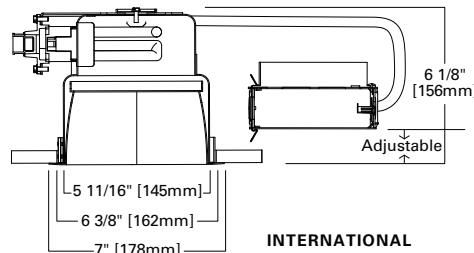
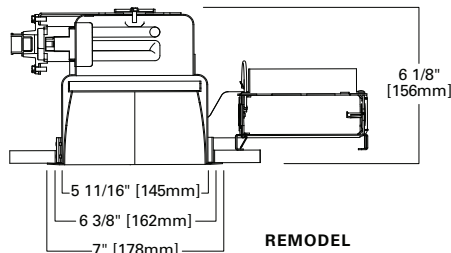
Compact Fluorescent

6-Inch

Remodel/International
Horizontal Crossblade Downlight

Energy Data

Sound Rating: Class A standards	
26W Triple 4-pin	
Ballast: Electronic	
Min. Starting Temperature: -10°C (15°F)	
120V Input Watts: 29	Line Amps: 0.25
277V Input Watts: 29	Line Amps: 0.10
Power Factor: >0.99	THD: <10%
32W Triple 4-pin	
Ballast: Electronic	
Min. Starting Temperature: -10°C (15°F)	
120V Input Watts: 36	Line Amps: 0.32
277V Input Watts: 36	Line Amps: 0.16
Power Factor: >0.99	THD: <10%
32W Triple 4-pin	
Ballast: Dimming	
Min. Starting Temperature: 10°C (50°F)	
120V Input Watts: 38	Line Amps: 0.31
277V Input Watts: 37	Line Amps: 0.13
Power Factor: >0.95	THD: <20%



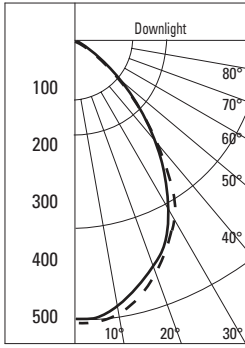
Example:

C6RH142ECP 6181LI5 WF = 6" CFL Horizontal Remodel Downlight with Cross Blade, 42 Watt Triple Tube 120/277 Volt, Chicago Plenum, Self Flanged with Specular Clear Finish

Housing	Wattage	Ballast	Options	Reflector	Lens	Finish	Option	Accessories
C6RH = 6" CFL Horizontal Remodel C6IH = 6" CFL Horizontal International	142 = 26/32/42W TTT	E = 120/277V 50/60 Hz Electronic 3E = 347V 50/60 Hz Electronic D26/32 = 26W or 32W 120-277V Dimming, Lutron EcoSystem D42 = 42W 120-277V Dimming, Lutron EcoSystem EDR26 = DeRated Wattage Label, 26W EDR32 = DeRated Wattage Label, 32W	CP = Chicago Plenum EM = Emergency Module with Remote Test Switch	6181 = Downlight Reflector, Self Flanged 6181E = Downlight Reflector	LI = Specular Clear W = Gloss White	5 = Blade (LI or W Matching Blade Finish) 6 = Perforated Blade (Light Grey Blades, W finish only)	WF = White painted flange (self flanged only)	FK5 = 5 Amp Field Installable Fuse Kit 300V Max ABR6P = Remodel Adaptor Ring for 7" OD ABR7P = Remodel Adaptor Ring for 8" OD ABR8P = Remodel Adaptor Ring for 9" OD

PHOTOMETRICS

Candlepower Distribution Curve



— 0°
- - - 90°

Test No. H22360
C6RH132 6181P6
Lamp = 32W PLT
Lumens = 2400
Spacing Criteria: 0° = 0.8, 90° = 0.8
Efficiency = 21.6%

Zonal Lumen Summary

Zone	Lumens	%Fixture
0-30	286	55.2
0-40	384	74.0
0-60	476	91.9
0-90	519	100.0
90-180	0	0.0
0-180	519	100.0

Luminance

Degrees	CD/SQ M	
	0°	90°
45	5704	5688
55	4203	4130
65	3501	3445
75	2697	2743
85	2328	2533

Candela Distribution

Degrees Vertical	0° 90°	
	0	492
5	479	491
15	413	430
25	285	277
35	159	149
45	68	67
55	40	40
65	25	24
75	12	12
85	3	4
90	0	0

Cone of Light

Distance Fixture to Lighted Plane	Initial Footcandles at Nadir	Beam Diameter
5'6"	12.8	5'0"
6'6"	9.2	5'6"
8'0"	6.1	7'0"
10'0"	4.0	8'6"
12'0"	2.7	10'0"
14'0"	2.0	12'0"

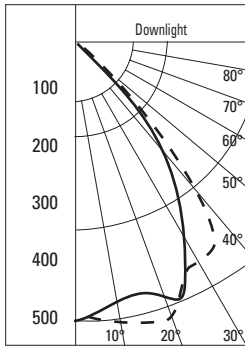
Beam diameter is to 50% of maximum footcandles, rounded to the nearest half-foot.

Footcandle values are initial, apply appropriate light loss factors where necessary.

EM Multiplier (in emergency mode):
EM = .27

PHOTOMETRICS

Candlepower Distribution Curve



— 0°
- - - 90°

Test No. H22295
C6RH132 6181LI5
Lamp = 32W PLT
Lumens = 2400
Spacing Criteria: 0° = 1.3, 90° = 1.4
Efficiency = 37.9%

Zonal Lumen Summary

Zone	Lumens	%Fixture
0-30	391	43.0
0-40	626	68.9
0-60	868	95.5
0-90	909	100.0
90-180	0	0.0
0-180	909	100.0

Luminance

Degrees	CD/SQ M	
	0°	90°
45	18411	18076
55	7511	8816
65	4544	4441
75	1205	1325
85	858	930

Candela Distribution

Degrees Vertical	0° 90°	
	0	459
5	453	464
15	431	478
25	455	449
35	334	403
45	209	205
55	69	81
65	31	30
75	5	6
85	1	1
90	0	0

Cone of Light

Distance Fixture to Lighted Plane	Initial Footcandles at Nadir	Beam Diameter
5'6"	12.0	7'6"
6'6"	8.9	9'0"
8'0"	5.7	12'0"
10'0"	3.7	15'6"
12'0"	2.5	16'6"
14'0"	1.8	20'0"

Beam diameter is to 50% of maximum footcandles, rounded to the nearest half-foot.

Footcandle values are initial, apply appropriate light loss factors where necessary.

EM Multiplier (in emergency mode):
EM = .27