

# Assembly Instructions

All Terrain®  
Binder Tower  
August 2004

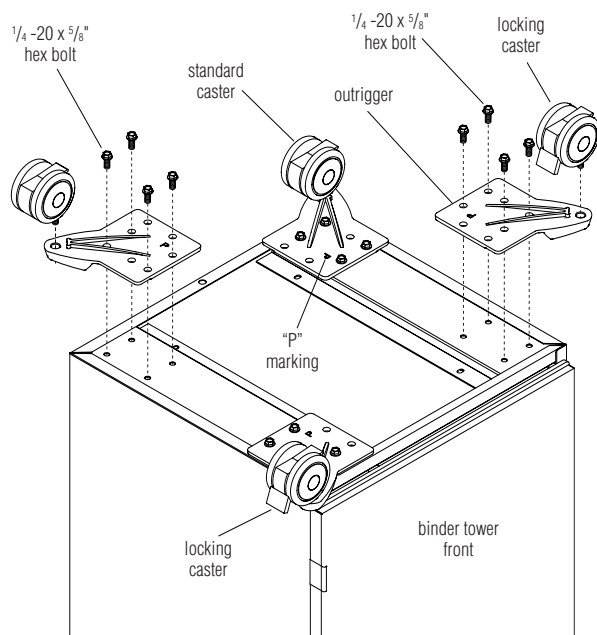


Figure 1

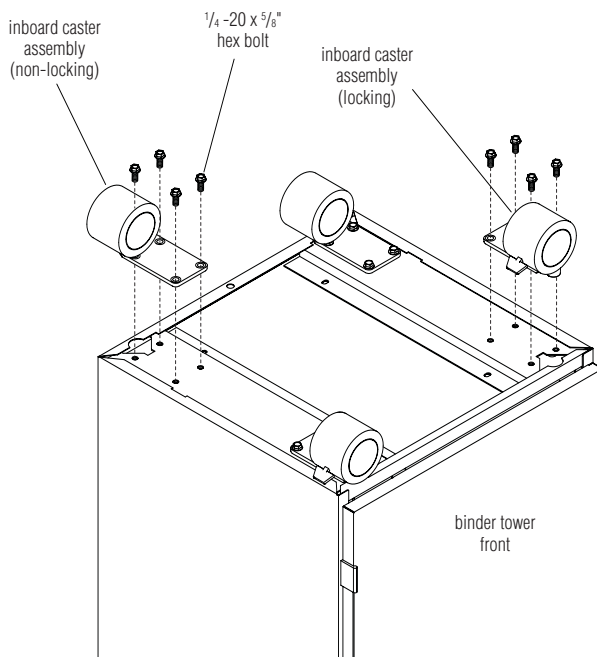
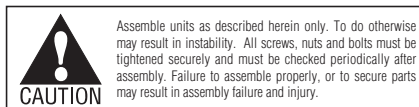


Figure 2



## Caster with Outriggers Assembly

1. Locate the caster/hardware packet that is shipped inside the binder tower. Secure or remove any loose components inside the tower.
2. Carefully turn storage tower on it's back or upside-down on a soft protective surface.
3. Position the outriggers as illustrated, with the "P" marking face up, over the appropriate mounting holes at the underside of the tower. Secure each outrigger to the underside of the tower with four 1/4-20 x 5/8 inch hex head bolts (Figure 1).
4. Thread the casters into the outriggers. Locking casters must be positioned to the front of the cabinet as illustrated. Tighten the nut of the caster to the tower with a wrench (Figure 1).
5. Gently raise the cabinet to it's upright position on the casters (Figure 1).

## Inboard Caster Assembly

1. Locate the caster/hardware packet that is shipped inside the binder tower. Secure or remove any loose components inside the tower.
  2. Carefully turn storage tower upside-down on a soft protective surface.
- Note:** Locking casters must be positioned to the front of the cabinet.
3. Position the caster assemblies as illustrated, over the appropriate mounting holes at the underside of the tower. Secure each assembly to the underside of the tower with four 1/4-20 x 5/8 inch hex head bolts (Figure 2).
  4. Gently raise the cabinet to it's upright position on the casters (Figure 2).



# All Terrain® Binder Tower

## Assembly Instructions



Assemble units as described herein only. To do otherwise may result in instability. All screws, nuts and bolts must be tightened securely and must be checked periodically after assembly. Failure to assemble properly, or to secure parts may result in assembly failure and injury.

### Flush-Mount Pull Assembly

1. Locate the pull/hardware packet that is shipped inside the binder tower.
2. Using two 4mm x 10mm screws, fasten the pull to the door as illustrated (Figure 3).
3. Finish the inside of the door with two black plastic screw caps (Figure 3).

**Note:** If installing a pull on a laminate door, use two 4mm x 25mm screws per pull. Black caps are not required.

### Landing Pad Assembly

1. The landing pad top is shipped with two bolts securing it to the storage unit. Remove the two bolts and properly dispose of them. Gently set the top aside, assuring it will not get damaged or scratched.
2. Locate the hardware pack for the Landing Pad. Begin by installing four landing pad mount bushings to the underside of the landing pad using four #8 x 1/2" screws as illustrated. Place landing pad post bushings into the bottom of each landing pad post and set the four landing pad posts onto the mounting holes at the corners of the cabinet top.
3. Place a 1/4" flat washer onto each 1/4"-20 x 3 1/2" Phillips screw. From inside the cabinet, route each screw up through the top of the cabinet, and through the landing pad bushing and landing pad post. The landing pad post and bushings will hold the screws in place (Figure 4).
4. Carefully place the landing pad on top of the four posts, lining up the upper landing pad mount bushings with the posts and 3 1/2" screws (Figure 4).
5. Tighten the screws, securing the pad and the posts to the top of the tower. Be careful to not over-tighten (Figure 4).

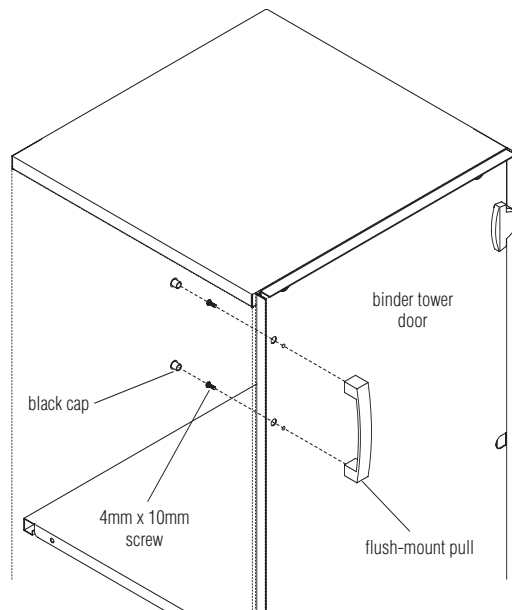


Figure 3

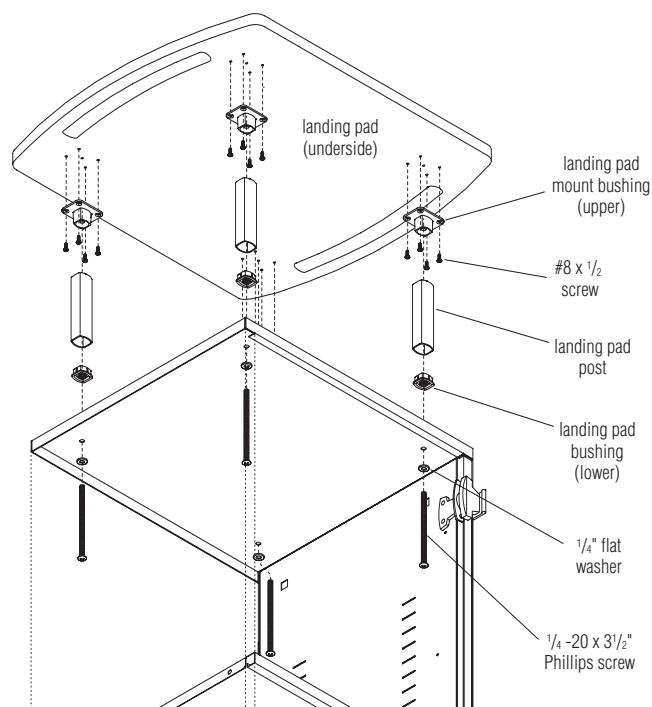


Figure 4



Assemble units as described herein only. To do otherwise may result in instability. All screws, nuts and bolts must be tightened securely and must be checked periodically after assembly. Failure to assemble properly, or to secure parts may result in assembly failure and injury.

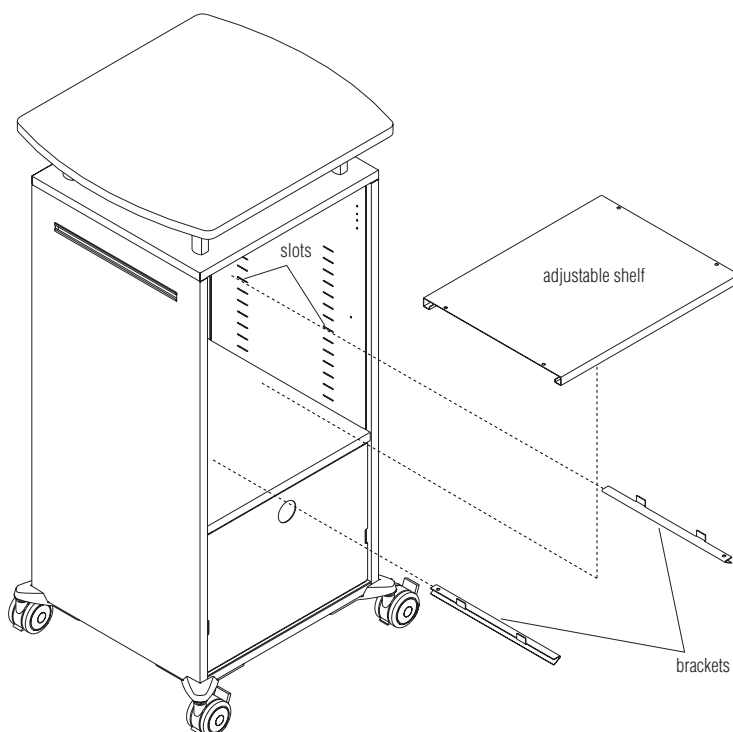


Figure 4

#### Adjustable Shelf Assembly

1. Remove the shipping tape securing the shelf and brackets during shipment.
2. Hook the shelf brackets into the slots at the inside of the cabinet as illustrated. Make sure the brackets are at the same height on both sides (Figure 5).
3. Install the shelf by setting it onto the brackets. Make sure the shelf is pushed all the way back into the cabinet (Figure 5).

#### Door Hinge Adjustment

1. For overlay adjustment, turn eccentric screw (A). The overlay can be reduced a maximum of -2 mm (Figure 6).
2. For height adjustment (+/- 2 mm) first unscrew fixing screw (B). Detach center stop (C) with screwdriver, adjust the height of the door and tighten fixing screws (B) (Figure 6).

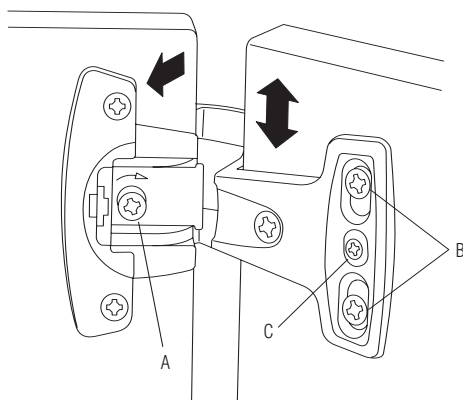


Figure 5