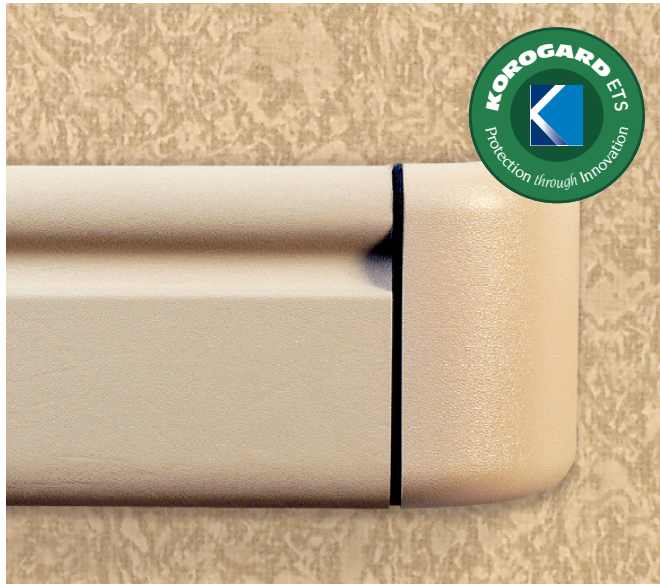


# Koroseal Wall Protection Systems

## Korogard® H200/H20E & H210 Handrail



**H200**



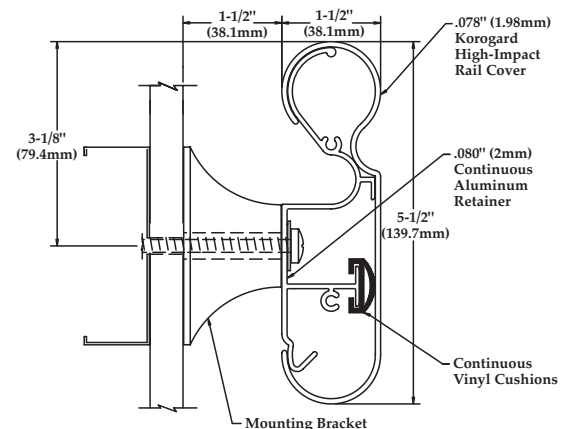
**H210**

The **KOROGARD** H200/H20E and H210\* Handrails are 5-1/2" (139.7mm) rails with full-length vinyl bumpers and continuous aluminum retainers. With sturdy mounting brackets maintaining wall clearance and stability, the H200/H20E and H210 provide support in medium- to high-impact areas. The H200 is available as H20E, a **KOROGARD ETS** product manufactured with a unique blend of high-performance materials and recycled aluminum. End and corner caps are available either as patented\*\* foam cushion or as rigid plastic. Black reveals at end and corner caps provide enhanced aesthetics.

The **KOROGARD** H200/H20E and H210 Handrails conform to current ADA regulations and are backed by a limited five-year warranty. All Handrails are Class I/A fire rated and meet national building code standards. All **KOROGARD** linear profiles are available in **KOROGARD** standard colors and color-coordinate with a multitude of **KOROSEAL**® Wallcoverings for a systems approach to wall protection.

For more information on **KOROGARD** Handrails or the **KOROSEAL** Wall Protection System, please call your local **KOROGARD** distributor or 800-628-0449.

H200/H20E/H210	ACCESSORY ITEMS
H105	Splice Kit
H111	End Cap (Foam Cushion) w/Reveal
H113	90° Corner Cap (Foam Cushion) w/Reveal
H114	135° Corner Cap (Foam Cushion) w/Reveal
H131	Rigid End Cap (Plastic) w/Reveal
H133	90° Rigid Corner Cap (Plastic) w/Reveal
H134	135° Rigid Corner Cap (Plastic) w/Reveal



**H200/H20E/H210**

\* Minimums apply

\*\* USP #5,469,682, RJF International Corporation

# Product Guide Specification

## SECTION 10 26 00 HANDRAILS

### PART 1 GENERAL

#### 1.01 SECTION INCLUDES

5-1/2" (140mm) Handrail/Bumper Systems.

#### 1.02 SUBMITTALS

- A. Submit in accordance with Section 01 33 00—Submittals.
- B. Product Data: Submit manufacturer's product data.
- C. Shop Drawings: Submit shop drawings showing components, dimensions, and anchorage details.
- D. Samples: Submit for approval 12" (305mm) long sample for each model, color, and finish specified, including end caps and corner units.
- E. Test Reports: Submit manufacturer's test reports and certification indicating compliance with applicable ADA and building code requirements.

#### 1.03 QUALITY ASSURANCE

Comply with NFPA 101® for interior finish materials. Smoke developed less than 450 and flame spread of 25 or less in accordance with ASTM E 84.

#### 1.04 DELIVERY, STORAGE, AND HANDLING

- A. Delivery: Deliver materials to site in manufacturer's original, unopened containers and packaging, with labels clearly identifying product name and manufacturer.
- B. Storage: Store materials in clean, dry location, protected against damage of any kind.
- C. Handling: Protect materials during handling and installation to prevent damage.

### PART 2 PRODUCTS

#### 2.01 MANUFACTURER

Koroseal Wall Protection Systems,  
A Division of RJF International Corporation.

#### 2.02 HANDRAILBUMPER SYSTEMS

Koroseal "Korogard" H200/H210 Handrail: Handrail mounted over continuous aluminum retainer and full-length vinyl bumper cushion with mounting brackets maintaining wall clearance. Exposed surfaces shall be free of wrinkling, chipping, discoloration, or other imperfections.

1. Dimensions
  - a. Height: 5-1/2" (140mm).
  - b. Width: 1-1/2" (38mm).
  - c. Clear Space from Wall: 1-1/2" (38mm).
2. Profile: High-impact vinyl acrylic extrusion locked in place, nominal 0.078" (2mm) thick. Class I/A fire rating, when tested in accordance with ASTM E 84.

3. Extrusion: Pebble grain finish. Contains EPA-registered Micro-Chek antimicrobial agent.
4. Retainer: Continuous 6063-T6 aluminum retainer along entire length of Handrail/Bumper, minimum 0.080" (2mm) thick.
5. End Caps: [Foam cushion] [Rigid plastic] wall return unit of color and texture similar to that of rail.
6. Corners: Internal and external corner units of similar material to end cap units. Carry line of Handrail/Bumper continuously around corner unless otherwise indicated on drawings.
7. Reveal: Black 1/8" (3mm) wide flexible PVC insert between profile cover and end cap/corner provides aesthetic design option.

### PART 3 EXECUTION

#### 3.01 EXAMINATION

Verify by examination that wall surfaces are acceptable to receive the specified Handrail/Bumper Systems. Notify the Architect in writing if wall surfaces are not acceptable. Do not begin installation until unacceptable conditions have been corrected.

#### 3.02 INSTALLATION

- A. Install Handrail/Bumper Systems to wall securely in accordance with manufacturer's written instructions.
- B. Install Handrail/Bumper Systems accurately in location, alignment, and elevation.
- C. Provide horizontal steel stud back-up in drywall stud cavity to accept fasteners.



**KOROGARD®**  
WALL PROTECTION SYSTEMS

800-628-0449 • [www.korogard.com](http://www.korogard.com) • Division 10 26 00