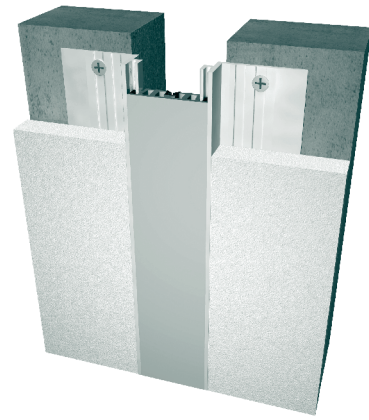


101 Series Recess Mount

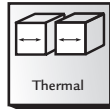
A07 - Wall to Wall or Ceiling to Ceiling

A09 - Wall to Corner or Wall to Ceiling



Movement Rating ± 25%

Product Guide



- ▶ Dual durometer seal provide secure fit and optimal flexibility
- ▶ Seals absorb limited serviceable seismic movement
- ▶ Recessed mount frames for minimal sightline
- ▶ Interior and exterior applications
- ▶ Adaptable to any 5/8" (16mm) wall and ceiling finishes including drywall, plaster and tile
- ▶ Snap-on design for easy on site assembly
- ▶ Easy to clean flush seals
- ▶ Mill finish aluminum
- ▶ Optional decorative caps in brass or stainless steel
- ▶ Standard seal colors: black, beige, gray, off white and bright white. Custom colors available upon request.

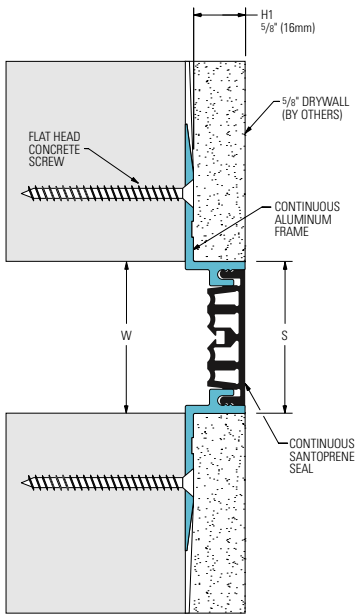
SYSTEM DATA

Application	System	W		H1		H2		S		B		Movement +/-				Load	
		Joint Width		Frame Height 1		Height 2		Sight Line		Blockout		Horizontal		Vertical		US ton	kN
		US	mm	US	mm	US	mm	US	mm	US	mm	US	mm	US	mm		
Wall/Wall Ceiling/Ceiling	101-A07-025	1"	25	5/8"	16	*	*	1"	25	*	*	1/4"	6	1/4"	6	*	*
	101-A07-038	1 1/2"	38	5/8"	16	*	*	1 7/16"	36	*	*	3/8"	10	3/8"	10	*	*
	101-A07-050	2"	51	5/8"	16	*	*	1 7/8"	47	*	*	1/2"	13	1/2"	13	*	*
	101-A07-075	3"	76	5/8"	16	*	*	2 7/8"	73	*	*	3/4"	19	3/4"	19	*	*
Wall/Corner Wall/Ceiling	101-A09-025	1"	25	5/8"	16	*	*	1"	25	*	*	1/4"	6	1/4"	6	*	*
	101-A09-038	1 1/2"	38	5/8"	16	*	*	1 7/16"	36	*	*	3/8"	10	3/8"	10	*	*
	101-A09-050	2"	51	5/8"	16	*	*	1 7/8"	47	*	*	1/2"	13	1/2"	13	*	*
	101-A09-075	3"	76	5/8"	16	*	*	2 7/8"	73	*	*	3/4"	19	3/4"	19	*	*

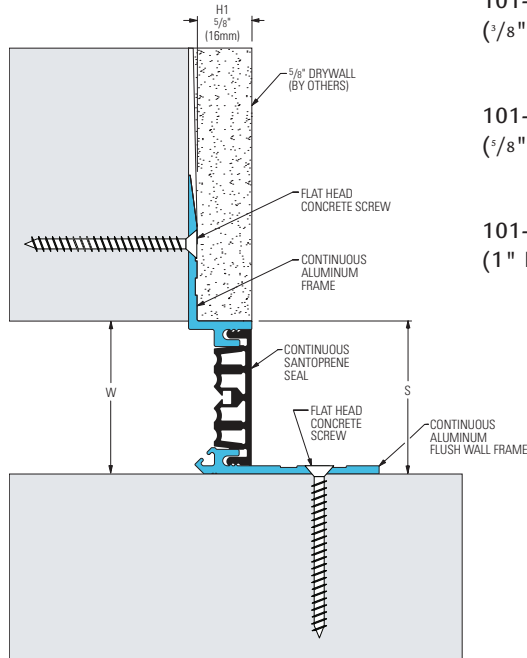
IPC.819/REV.4

101 Series Recessed Mount Wall and Ceiling Systems

101-A07 Wall/Wall Ceiling/Ceiling
(2" (50mm) system shown)



101-A09 Wall/Corner Wall/Ceiling
(2" (50mm) system shown)

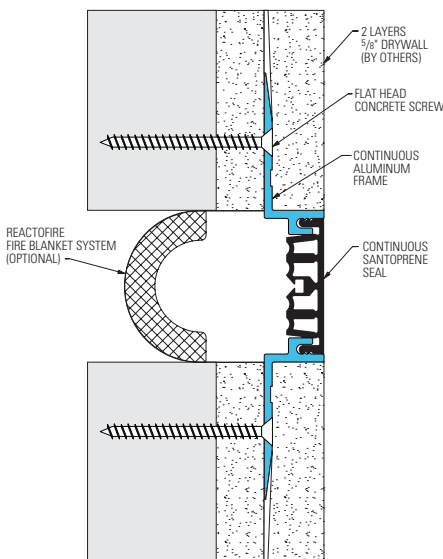


Wall Frame Options



101 Series Options

Reactofire Fire Blanket System
(101-A07-050 system shown)



Decorative Caps
(101-A07-050 system shown)

