

SPECIFY SEAL COLOR	
Black	(J1D001)
Beige	(J1D002)
Gray	(J1D003)
Off White	(J1D004)
Bright White	(J1D005)

**Aluminum Finish-Mill**

## 103-A01-025 SYSTEM

Joint Width	Movement ±		Load
	Horizontal	Vertical	
US mm	US mm	US mm	US Ton
1"	1/4"	1/4"	2.8
			25

APPLICATION-

SURFACE MOUNT FLOOR/FLOOR CONDITION  
FOR 1/8" VCT FLOORING

**INPro**  
**JOINTMASTER**  
ARCHITECTURAL JOINT SYSTEMS

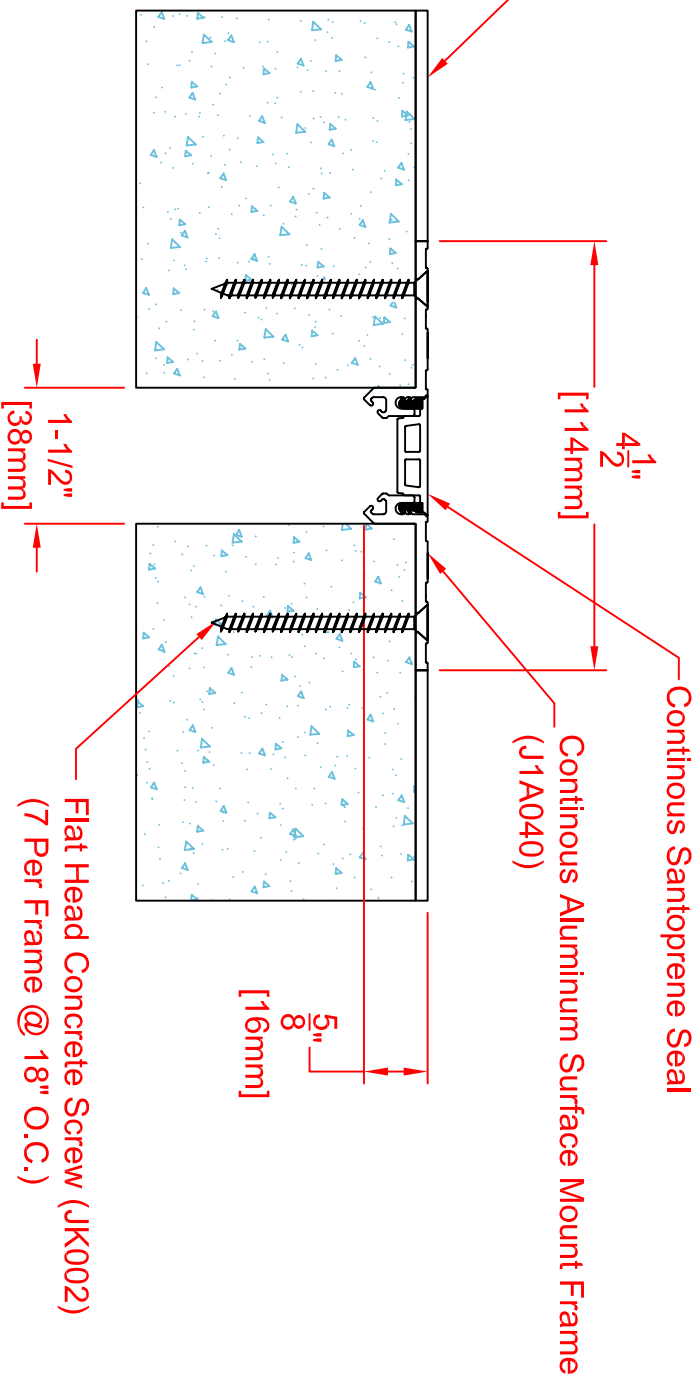
DATE: June, 2003

SCALE: 1/2

REV: (B) 6/28/04

**INPro CORPORATION**  
Interior and Exterior Architectural Products  
S80 W18766 Apollo Drive  
Muskego, WI 53150 USA

1/8" [3mm] Floor Finish  
(By Others)



SPECIFY SEAL COLOR	
Black (J1D006)	
Beige (J1D007)	
Gray (J1D008)	
Off White (J1D009)	
Bright White (J1D010)	

**Aluminum Finish-Mill**

### 103-A01-038 SYSTEM

Joint Width	Movement ±		Load
	Horizontal	Vertical	
US mm	US mm	US mm	US Ton
1-1/2" 38	3/8" 10	3/8" 10	2.7 KN
			24

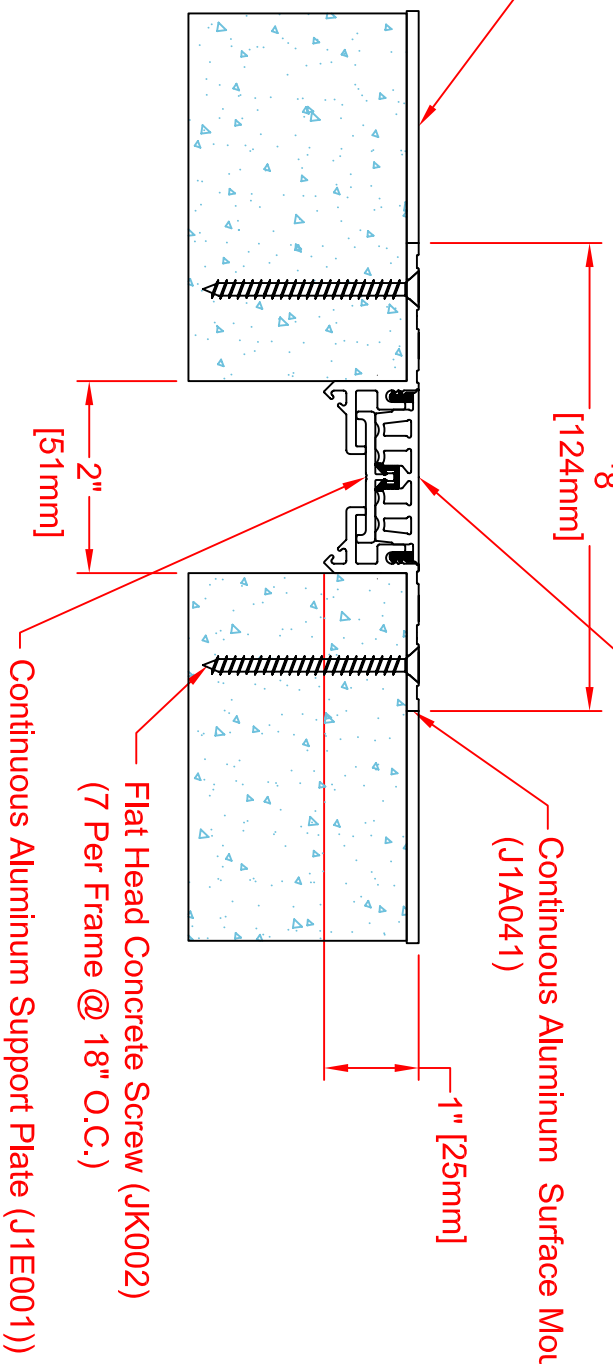
1/8" [3mm] Floor Finish  
(By Others)

4 7/8" [124mm]

Continuous Santoprene Seal

Continuous Aluminum Surface Mount Frame  
(J1A041)

1" [25mm]



SPECIFY SEAL COLOR	
Black	(J1D011)
Beige	(J1D012)
Gray	(J1D013)
Off White	(J1D014)
Bright White	(J1D015)

**Aluminum Finish-Mill**

### 103-A01-050 SYSTEM

Joint Width	Movement ±		Load	
	Horizontal	Vertical	US Ton	KN
US mm	US mm	US mm	US Ton	KN
2"	1/2"	13	1.7	15

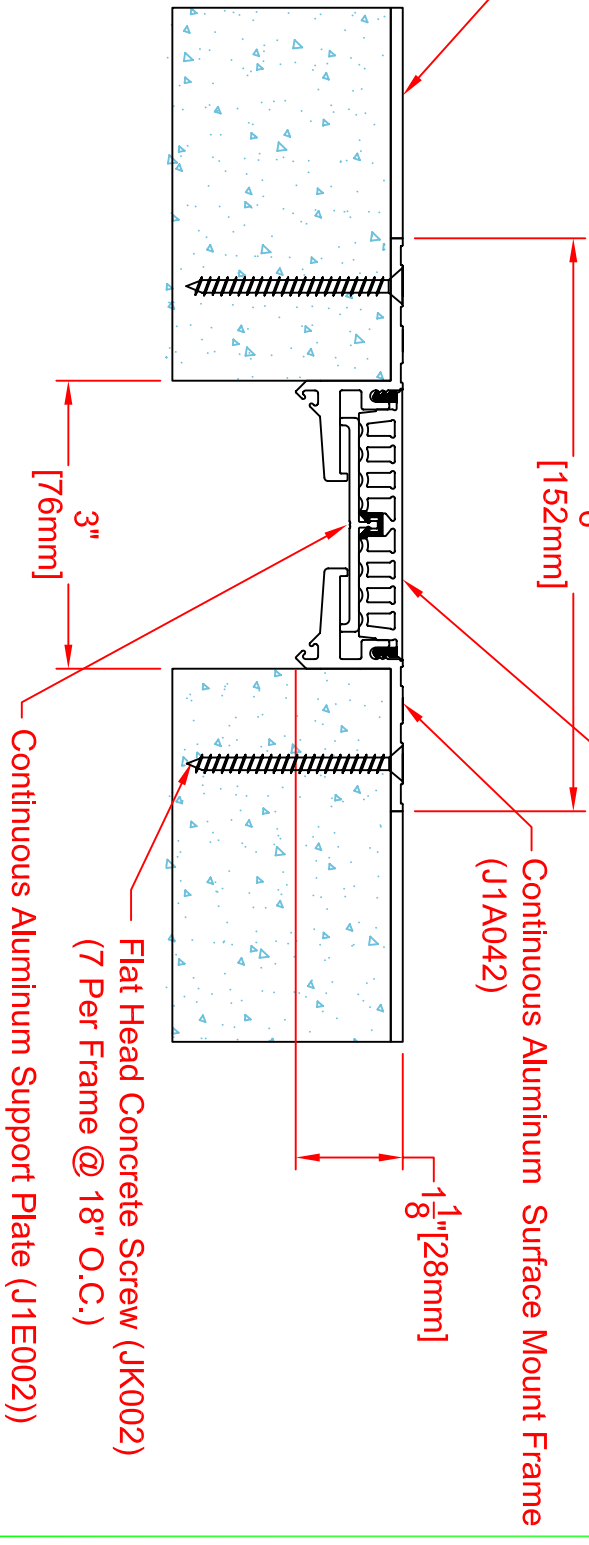
1/8" [3mm] Floor Finish  
(By Others)

6" [152mm]

Continuous Santoprene Seal

Continuous Aluminum Surface Mount Frame (J1A042)

1 1/8" [28mm]



SPECIFY SEAL COLOR	
Black	(J1D021)
Beige	(J1D022)
Gray	(J1D023)
Off White	(J1D024)
Bright White	(J1D025)

**Aluminum Finish-Mill**

### 103-A01-075 SYSTEM

Joint Width	Movement ±		Load
	Horizontal	Vertical	
US mm	US mm	US mm	US Ton
3"	76	3/4"	19
		3/4"	19
			1.7
			15

APPLICATION-

SURFACE MOUNT FLOOR/FLOOR CONDITION  
FOR 1/8" VCT FLOORING

**INPro**  
**JOINTMASTER**  
ARCHITECTURAL JOINT SYSTEMS

DATE: June, 2003

SCALE: 1/2

REV: (B) 6/28/04

**INPro CORPORATION**  
Interior and Exterior Architectural Products  
S80 W18766 Apollo Drive  
Muskego, WI 53150 USA