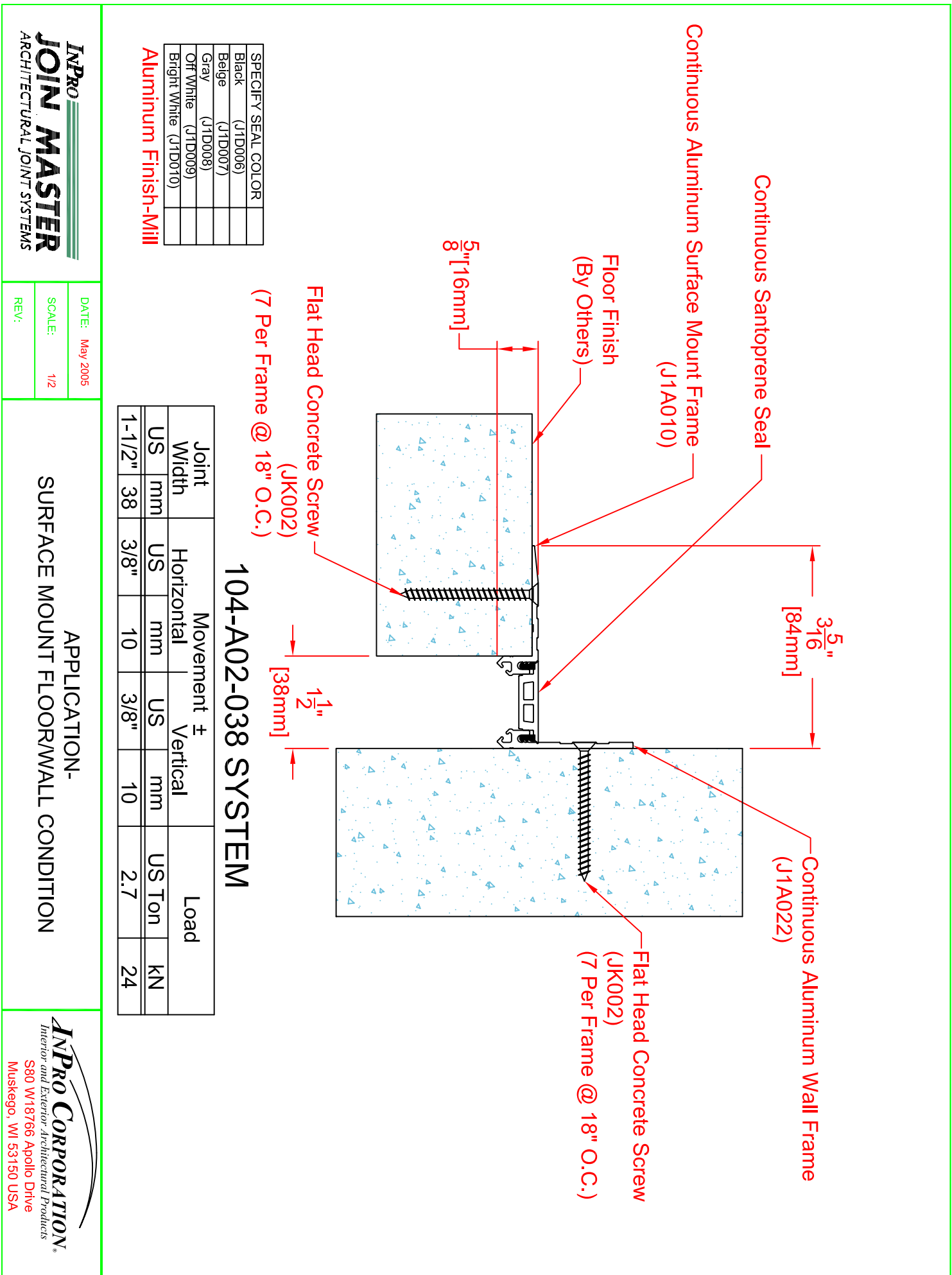


SPECIFY SEAL COLOR	
Black (J1D001)	
Beige (J1D002)	
Gray (J1D003)	
Off White (J1D004)	
Bright White (J1D005)	

Aluminum Finish-Mill

Joint Width	Movement ±		Load
	Horizontal	Vertical	
US mm	US mm	US mm	US Ton
1"	25	1/4"	6
			1/4"
			6
			2.8
			25

104-A02-025 SYSTEM

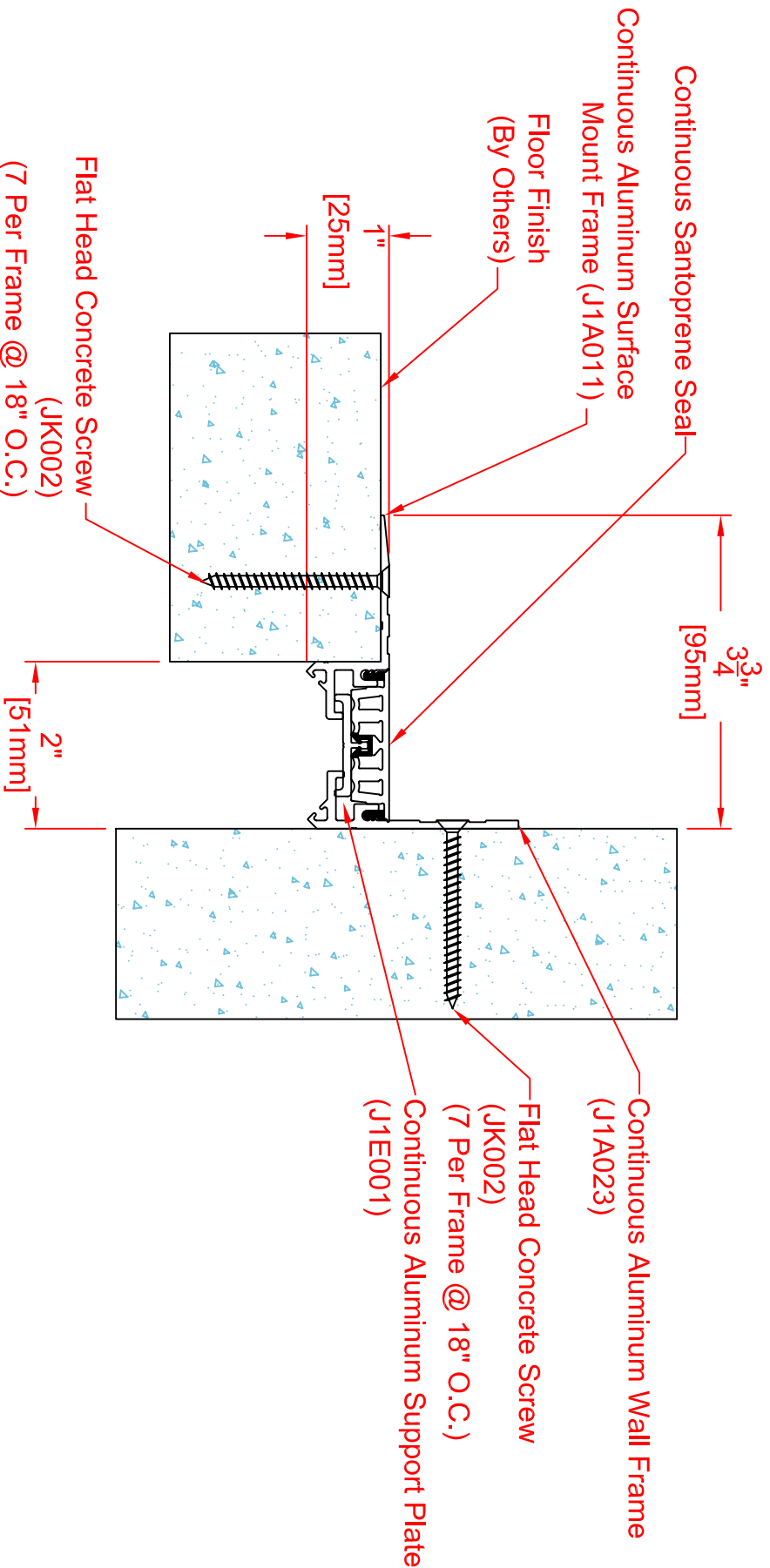


SPECIFY SEAL COLOR	
Black (J1D006)	
Beige (J1D007)	
Gray (J1D008)	
Off White (J1D009)	
Bright White (J1D010)	

Aluminum Finish-Mill

Joint Width	Movement ±		Load
	Horizontal	Vertical	
US mm	US mm	US mm	US Ton
1-1/2"	38	3/8"	10
		3/8"	10
			2.7
			24

104-A02-038 SYSTEM



SPECIFY SEAL COLOR	
Black (J1D011)	
Beige (J1D012)	
Gray (J1D013)	
Off White (J1D014)	
Bright White (J1D015)	

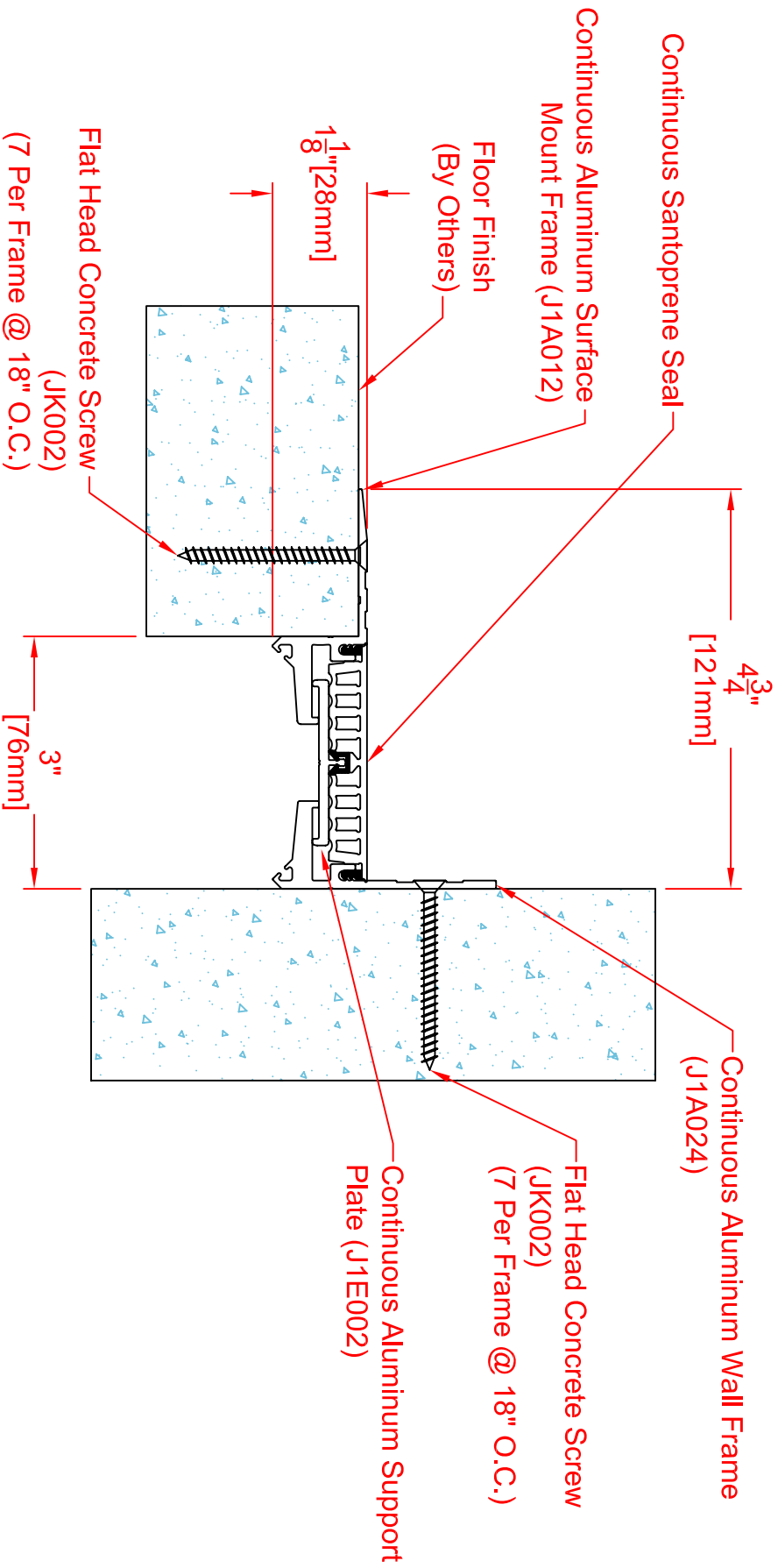
Aluminum Finish-Mill

Joint Width	Movement ±		Load
	Horizontal	Vertical	
US mm	US mm	US mm	US Ton
2"	1/2"	1/2"	1.7
	13	13	15

104-A02-050 SYSTEM

APPLICATION-

SURFACE MOUNT FLOOR/WALL CONDITION



SPECIFY SEAL COLOR	
Black (J1D021)	
Beige (J1D022)	
Gray (J1D023)	
Off White (J1D024)	
Bright White (J1D025)	

Aluminum Finish-Mill

Joint Width	Movement ±		Load
	Horizontal	Vertical	
US 3"	US 3/4"	US 3/4"	US Ton 1.7
mm 76	mm 19	mm 19	kN 15

104-A02-075 SYSTEM