

# 112, 113 Series Recess Mount

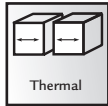
A07 - Wall to Wall or Ceiling to Ceiling

A09 - Wall to Corner or Wall to Ceiling



Movement Rating  $\pm$  25%

## Product Guide



- ▶ Dual durometer seal provides secure fit and optimal flexibility
- ▶ Seals absorb limited serviceable seismic movement
- ▶ Designed for 5/8" (16mm) drywall installation
- ▶ Model 112 - Snap-in frame for 5/8" (16mm) drywall - No need to finish\* Clear anodized finish on 112 model
- ▶ Model 113 - Finish with laster joint compound or wallcovering
- ▶ Easy to clean flush seals
- ▶ Snap-fit design for easy on site assembly
- ▶ Standard seal colors: black, beige, gray, off white and bright white. Custom colors available upon request.

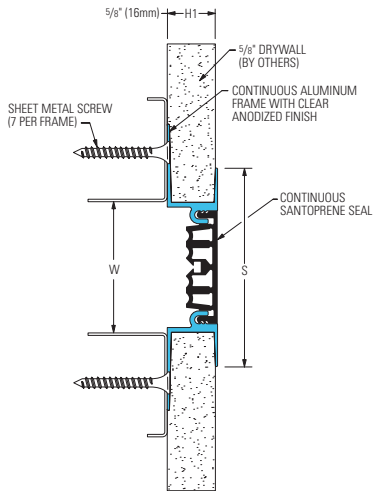
### SYSTEM DATA

Application	System	W		H1		H2		S		B		Movement +/-				Load	
		Joint Width		Frame Height 1		Height 2		Sight Line		Blockout		Horizontal		Vertical		US ton	kN
		US	mm	US	mm	US	mm	US	mm	US	mm	US	mm	US	mm		
Wall/Wall Ceiling/Ceiling	112-A07-025	1"	25	5/8"	16	*	*	2"	51	*	*	1/4"	6	1/4"	6	*	*
	112-A07-038	1 1/2"	38	5/8"	16	*	*	2 7/16"	62	*	*	3/8"	10	3/8"	10	*	*
	112-A07-050	2"	51	5/8"	16	*	*	2 7/8"	73	*	*	1/2"	13	1/2"	13	*	*
	112-A07-075	3"	76	5/8"	16	*	*	4"	102	*	*	3/4"	19	3/4"	19	*	*
	113-A07-025	1"	25	*	*	*	*	1"	25	*	*	1/4"	6	1/4"	6	*	*
	113-A07-038	1 1/2"	38	*	*	*	*	1 1/2"	36	*	*	3/8"	10	3/8"	10	*	*
	113-A07-050	2"	51	*	*	*	*	2"	47	*	*	1/2"	13	1/2"	13	*	*
Wall/Corner Wall/Ceiling	112-A09-025	1"	25	5/8"	16	*	*	1 1/2"	38	*	*	1/4"	6	1/4"	6	*	*
	112-A09-038	1 1/2"	38	5/8"	16	*	*	1 15/16"	49	*	*	3/8"	10	3/8"	10	*	*
	112-A09-050	2"	51	5/8"	16	*	*	2 3/8"	60	*	*	1/2"	13	1/2"	13	*	*
	112-A09-075	3"	76	5/8"	16	*	*	3 3/8"	86	*	*	3/4"	19	3/4"	19	*	*
	113-A09-025	1"	25	*	*	*	*	1"	25	*	*	1/4"	6	1/4"	6	*	*
	113-A09-038	1 1/2"	38	*	*	*	*	1 1/2"	36	*	*	3/8"	10	3/8"	10	*	*
	113-A09-050	2"	51	*	*	*	*	2"	47	*	*	1/2"	13	1/2"	13	*	*
113-A09-075	3"	76	*	*	*	*	3"	73	*	*	3/4"	19	3/4"	19	*	*	

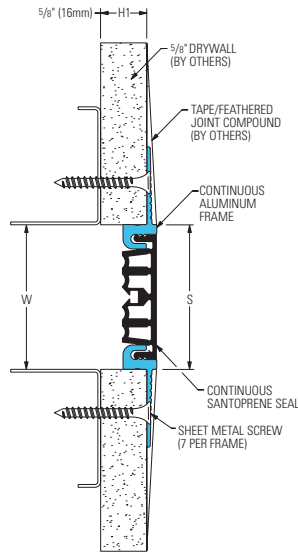
IPC.811/REV.6

# 112, 113 Series Wall and Ceiling Systems for Drywall Finishes

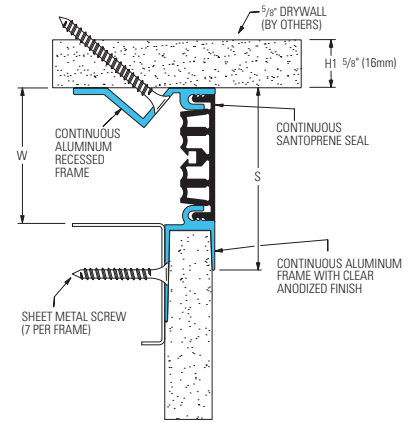
112-A07 Wall/Wall Ceiling/Ceiling (2" (50mm) system shown)



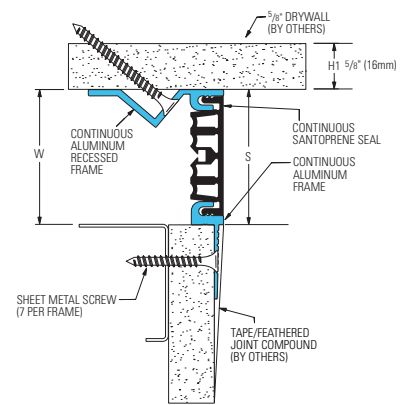
113-A07 Wall/Wall Ceiling/Ceiling (2" (50mm) system shown)



112-A09 Wall/Corner Wall/Ceiling (2" (50mm) system shown)

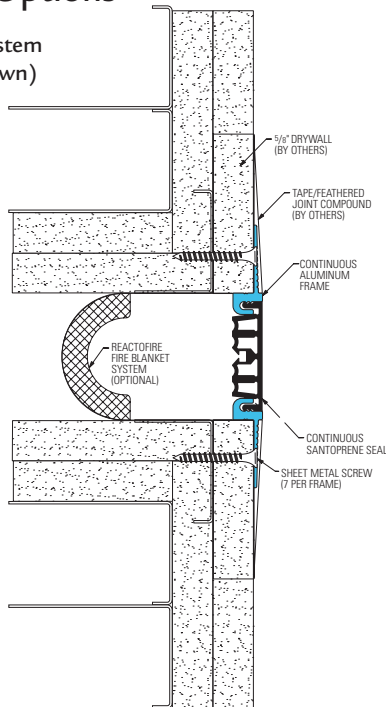


113-A09 Wall/Corner Wall/Ceiling (2" (50mm) system shown)



## 112, 113 Series Options

Reactofire Fire Blanket System (113-A07-050 system shown)



P.O. Box 406 · Muskego, Wisconsin 53150 USA

www.inprocorp.com

Nationwide 800.222.5556/Fax 888.715.8407

International Sales 262.679.5521 / Fax 262.679.5524