

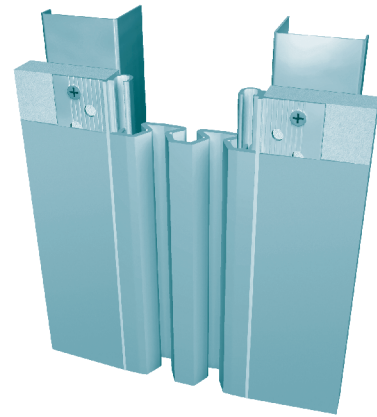
114, 115 Series

A07 - Wall to Wall or Ceiling to Ceiling

A09 - Wall to Corner or Wall to Ceiling

A24 - Ceiling to Ceiling

A18 - Wall to Ceiling



Product Guide



(114 only)



- ▶ Model 114 - Designed for 5/8" (16mm) drywall installation and minimal sightline
- ▶ 19 Finish with plaster joint compound or wall covering - Model 114
- ▶ Model 115 frame pop rivets to T-Bar profile in suspended ceiling system
- ▶ Bellows seal allows for seismic movement
- ▶ Standard seal colors: black, beige, gray, off white and bright white. Custom colors available upon request.

SYSTEM DATA

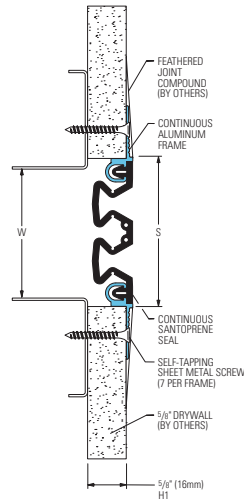
Application	System	W Joint Width		H1 Frame Height 1		H2 Sub Height 2		S Sight Line		B Blockout		Movement +/-				Load	
		US	mm	US	mm	US	mm	US	mm	US	mm	Horizontal		Vertical		US ton	kN
												US	mm	US	mm		
Wall/Wall Ceiling/Ceiling	114-A07-050	2"	51	*	*	*	*	2 1/8"	54	*	*	1"	25	1"	25	*	*
	114-A07-075	3"	76	*	*	*	*	3 1/16"	78	*	*	1 1/2"	38	1 1/2"	38	*	*
	114-A07-100	4"	102	*	*	*	*	4 1/8"	105	*	*	2"	51	2"	51	*	*
	114-A07-150	6"	152	*	*	*	*	6 1/8"	156	*	*	3"	76	3"	76	*	*
Wall/Corner Wall/Ceiling	114-A09-050	2"	51	*	*	*	*	2"	51	*	*	1"	25	1"	25	*	*
	114-A09-075	3"	76	*	*	*	*	3"	76	*	*	1 1/2"	38	1 1/2"	38	*	*
	114-A09-100	4"	102	*	*	*	*	4"	102	*	*	2"	51	2"	51	*	*
	114-A09-150	6"	152	*	*	*	*	6"	152	*	*	3"	76	3"	76	*	*

Application	System	W Joint Width		H1 Frame Height 1		H2 Sub Height 2		S Sight Line		B Blockout		Movement +/-				Load	
		US	mm	US	mm	US	mm	US	mm	US	mm	Horizontal		Vertical		US ton	kN
												US	mm	US	mm		
Ceiling/Ceiling	115-A24-050	2"	51	*	*	*	*	2"	51	*	*	1"	25	1"	25	*	*
	115-A24-075	3"	76	*	*	*	*	3"	76	*	*	1 1/2"	38	1 1/2"	38	*	*
	115-A24-100	4"	102	*	*	*	*	4"	102	*	*	2"	51	2"	51	*	*
Wall/Ceiling	115-A18-050	2"	51	*	*	*	*	2"	51	*	*	1"	25	1"	25	*	*
	115-A18-075	3"	76	*	*	*	*	3"	76	*	*	1 1/2"	38	1 1/2"	38	*	*
	115-A18-100	4"	102	*	*	*	*	4"	102	*	*	2"	51	2"	51	*	*

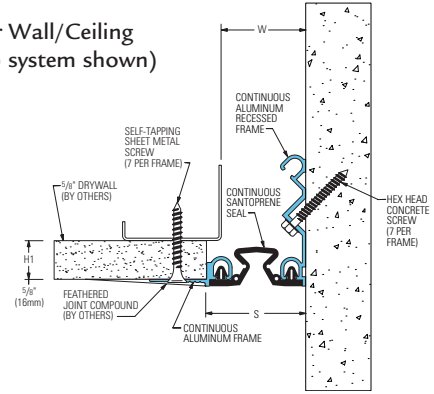
IPC.905/REV.4

114, 115 Series Wall and Ceiling Systems

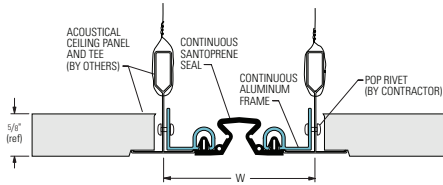
114-A07
Wall/Wall Ceiling/Ceiling
(3" (75mm) system shown)



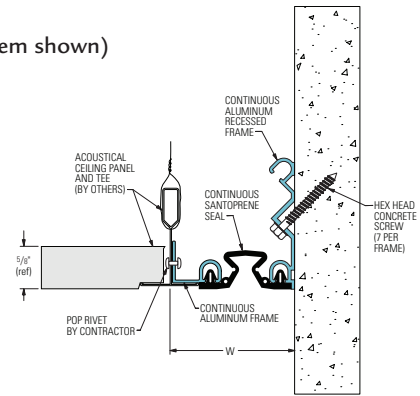
114-A09
Wall/Corner Wall/Ceiling
(2" (50mm) system shown)



115-A24
Ceiling/Ceiling
(2" (50mm) system shown)



115-A18
Ceiling/Wall
(2" (50mm) system shown)



114, 115 Series Options

Reactofire Fire Blanket System
(114-A07-075 system shown)

