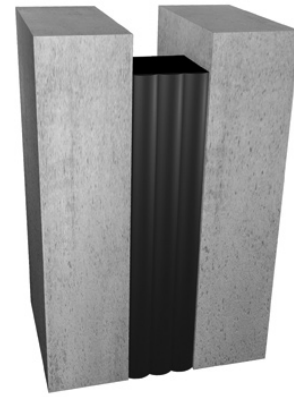


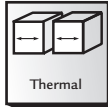
# Foam Seal Series

1200 System

1250 System



## Product Guide



### 1200 and 1250 Series Seal

- ▶ Prevents leaks with a watertight installation
- ▶ Self-expanding open cell foam construction on the 1200 for excellent compression recovery
- ▶ Closed cell foam construction on the 1250 offers UV and high-heat resistance that stands up against the elements
- ▶ Silicone seal available in 12 standard colors

#### SYSTEM DATA

Application	System	W		H1		H2		S		B		Movement +/-				Load	
		Joint Width		Frame Height 1		Depth		Sightline		Blockout		Compression		Expansion		US ton	kN
		US	mm	US	mm	US	mm	US	mm	US	mm	US	mm	US	mm		
Wall/Wall Wall/Corner	1200-050	1/2"	13	1 1/2"	38	*	*	*	*	*	*	1/4"	6	1/4"	6	*	*
	1200-100	1"	25	1 1/2"	38	*	*	*	*	*	*	1/2"	13	1/2"	13	*	*
	1200-150	1 1/2"	38	2"	51	*	*	*	*	*	*	3/4"	20	3/4"	20	*	*
	1200-200	2"	51	2"	51	*	*	*	*	*	*	1"	25	1"	25	*	*
	1200-250	2 1/2"	64	2"	51	*	*	*	*	*	*	1 1/4"	32	1 1/4"	32	*	*
	1200-300	3"	76	3"	76	*	*	*	*	*	*	1 1/2"	38	1 1/2"	38	*	*
	1200-350	3 1/2"	89	3"	76	*	*	*	*	*	*	1 3/4"	44	1 3/4"	44	*	*
	1200-400	4"	102	4"	102	*	*	*	*	*	*	2"	51	2"	51	*	*
	1200-500	5"	127	4"	102	*	*	*	*	*	*	2 1/2"	64	2 1/2"	64	*	*
	1200-600	6"	152	4"	102	*	*	*	*	*	*	3"	76	3"	76	*	*
1200-700	7"	179	5"	127	*	*	*	*	*	*	3 1/2"	89	3 1/2"	89	*	*	
1200-800	8"	203	5"	127	*	*	*	*	*	*	4"	102	4"	102	*	*	

Application	System	W		H1		H2		S		B		Movement +/-				Load	
		Joint Width		Frame Height 1		Frame Height 2		Sight Line		Blockout		Compression		Expansion		US ton	kN
		US	mm	US	mm	US	mm	US	mm	US	mm	US	mm	US	mm		
Wall/Wall Wall/Corner	1250-050	1/2"	13	1 1/2"	38	*	*	*	*	*	*	1/4"	6	1/4"	6	*	*
	1250-100	1"	25	1 1/2"	38	*	*	*	*	*	*	1/2"	13	1/2"	13	*	*
	1250-150	1 1/2"	38	2"	51	*	*	*	*	*	*	3/4"	20	3/4"	20	*	*
	1250-200	2"	51	2"	51	*	*	*	*	*	*	1"	25	1"	25	*	*
	1250-250	2 1/2"	64	2"	51	*	*	*	*	*	*	1 1/4"	32	1 1/4"	32	*	*
	1250-300	3"	76	3"	76	*	*	*	*	*	*	1 1/2"	38	1 1/2"	38	*	*
	1250-350	3 1/2"	89	3"	76	*	*	*	*	*	*	1 3/4"	44	1 3/4"	44	*	*
	1250-400	4"	102	4"	102	*	*	*	*	*	*	2"	51	2"	51	*	*
	1250-500	5"	127	4"	102	*	*	*	*	*	*	2 1/2"	64	2 1/2"	64	*	*
	1250-600	6"	152	4"	102	*	*	*	*	*	*	3"	76	3"	76	*	*
1250-700	7"	179	5"	127	*	*	*	*	*	*	3 1/2"	89	3 1/2"	89	*	*	
1250-800	8"	203	5"	127	*	*	*	*	*	*	4"	102	4"	102	*	*	

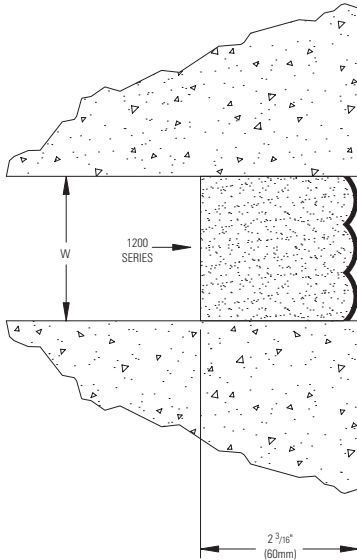


IPC.925/REV.1

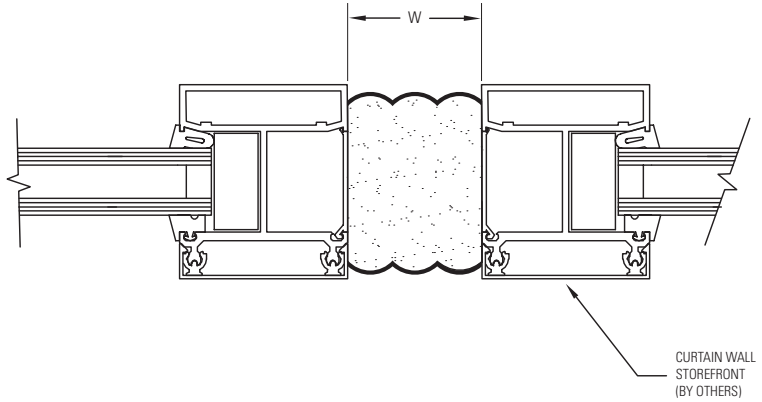
P.O. Box 406 · Muskego, Wisconsin 53150 USA  
 inprocorp.com  
 Nationwide 800.222.5556/Fax 888.715.8407  
 International Sales 262.679.5521/Fax 262.679.5524

**INPRO CORPORATION**  
 Interior and Exterior Architectural Products

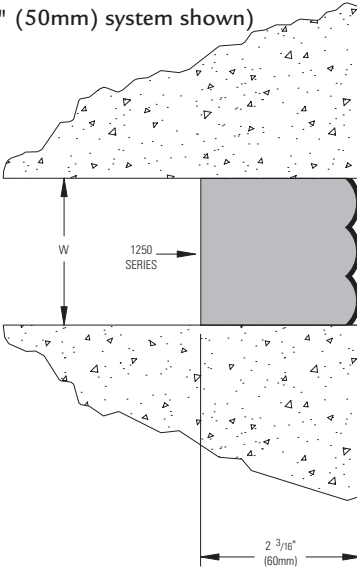
1200 Series  
(2" (50mm) system shown)



1200 Series  
(2" (50mm) double-sided system shown)



1250 Series  
(2" (50mm) system shown)



1250 Series  
(2" (50mm) double-sided system shown)

