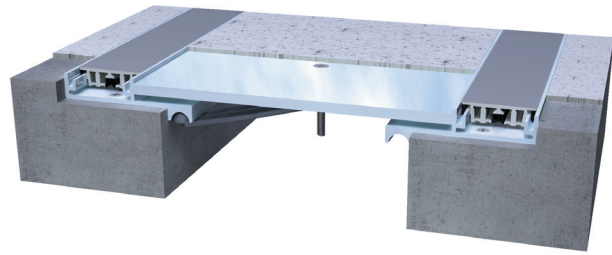


# 222, 223 Series

A01 - Floor to Floor

A02 - Floor to Wall



## Movement Rating $\pm$ 20%

### Product Guide



- ▶ Recessed mount frames for minimal sightline, adaptable with many floor finishes
- ▶ Dual durometer seal provides secure fit and optimal flexibility
- ▶ Optional caps in brass or stainless steel available for a decorative finish

### SYSTEM DATA

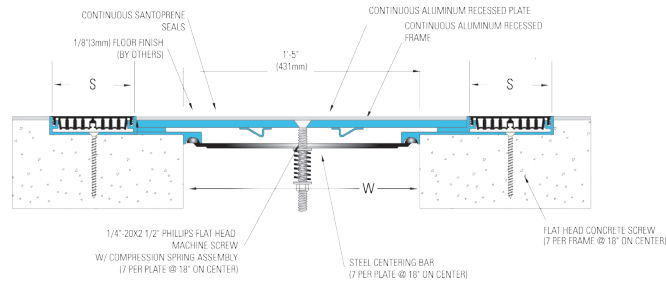
Application	System	W Joint Width		H1 Frame Height 1		H2 Sub Height 2		S Sight Line		B Blockout		Movement +/-				Load	
												Horizontal		Vertical			
		US	mm	US	mm	US	mm	US	mm	US	mm	US	mm	US	mm	US	kN
Floor/Floor	222-A01-200	8"	200	5/8"	16	1/8"	3	4"	100	4 1/2"	114	4	100	4	100	HP	HP
	222-A01-250	10"	250	5/8"	16	1/8"	3	4"	100	4 1/2"	114	5	125	5	125	HP	HP
	222-A01-300	12"	300	5/8"	16	1/8"	3	4"	100	4 1/2"	114	6	150	6	150	HP	HP
	222-A01-350	14"	350	5/8"	16	1/8"	3	4"	100	4 1/2"	114	7	175	7	175	HP	HP
	222-A01-400	16"	400	5/8"	16	1/8"	3	4"	100	4 1/2"	114	8	200	8	200	HP	HP
	222-A01-450	18"	450	5/8"	16	1/8"	3	4"	100	4 1/2"	114	9	225	9	225	HP	HP
	223-A01-200	8"	200	5/8"	16	3/8"	10	4"	100	4 1/2"	114	4	100	4	100	HP	HP
	223-A01-250	10"	250	5/8"	16	3/8"	10	4"	100	4 1/2"	114	5	125	5	125	HP	HP
	223-A01-300	12"	300	5/8"	16	3/8"	10	4"	100	4 1/2"	114	6	150	6	150	HP	HP
	223-A01-350	14"	350	5/8"	16	3/8"	10	4"	100	4 1/2"	114	7	175	7	175	HP	HP
	223-A01-400	16"	400	5/8"	16	3/8"	10	4"	100	4 1/2"	114	8	200	8	200	HP	HP
223-A01-450	18"	450	5/8"	16	3/8"	10	4"	100	4 1/2"	114	9	225	9	225	HP	HP	
Wall/Wall	222-A02-200	8"	200	5/8"	16	1/8"	3	4"	100	4 1/2"	114	4	100	4	100	HP	HP
	222-A02-250	10"	250	5/8"	16	1/8"	3	4"	100	4 1/2"	114	5	125	5	125	HP	HP
	222-A02-300	12"	300	5/8"	16	1/8"	3	4"	100	4 1/2"	114	6	150	6	150	HP	HP
	222-A02-350	14"	350	5/8"	16	1/8"	3	4"	100	4 1/2"	114	7	175	7	175	HP	HP
	222-A02-400	16"	400	5/8"	16	1/8"	3	4"	100	4 1/2"	114	8	200	8	200	HP	HP
	222-A02-450	18"	450	5/8"	16	1/8"	3	4"	100	4 1/2"	114	9	225	9	225	HP	HP
	223-A02-200	8"	200	5/8"	16	3/8"	10	4"	100	4 1/2"	114	4	100	4	100	HP	HP
	223-A02-250	10"	250	5/8"	16	3/8"	10	4"	100	4 1/2"	114	3	125	3	125	HP	HP
	223-A02-300	12"	300	5/8"	16	3/8"	10	4"	100	4 1/2"	114	6	150	6	150	HP	HP
	223-A02-350	14"	350	5/8"	16	3/8"	10	4"	100	4 1/2"	114	7	175	7	175	HP	HP
	223-A02-400	16"	400	5/8"	16	3/8"	10	4"	100	4 1/2"	114	8	200	8	200	HP	HP
223-A02-450	18"	450	5/8"	16	3/8"	10	4"	100	4 1/2"	114	9	225	9	225	HP	HP	

Shear movement = 25%. A07/09 condition dimensions / movement same as A01/A02 condition.

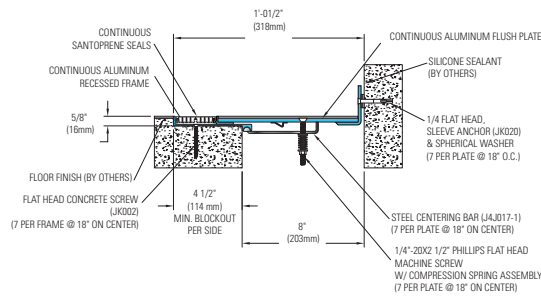
IPC.919/REV.1

# 222, 223 Series Recessed Mount Seismic Floor and Wall Systems

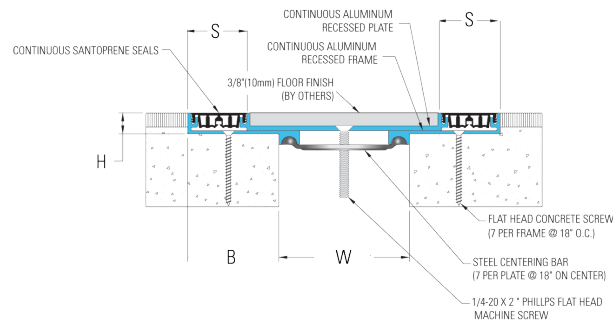
**A01 Floor/Floor**  
**(8" (200mm) system shown)**



**A02 Floor/Wall**  
**(8" (200mm) system shown)**



**A01 Floor/Floor**  
**(8" (200mm) system shown)**



**A02 Floor/Wall**  
**(8" (200mm) system shown)**

