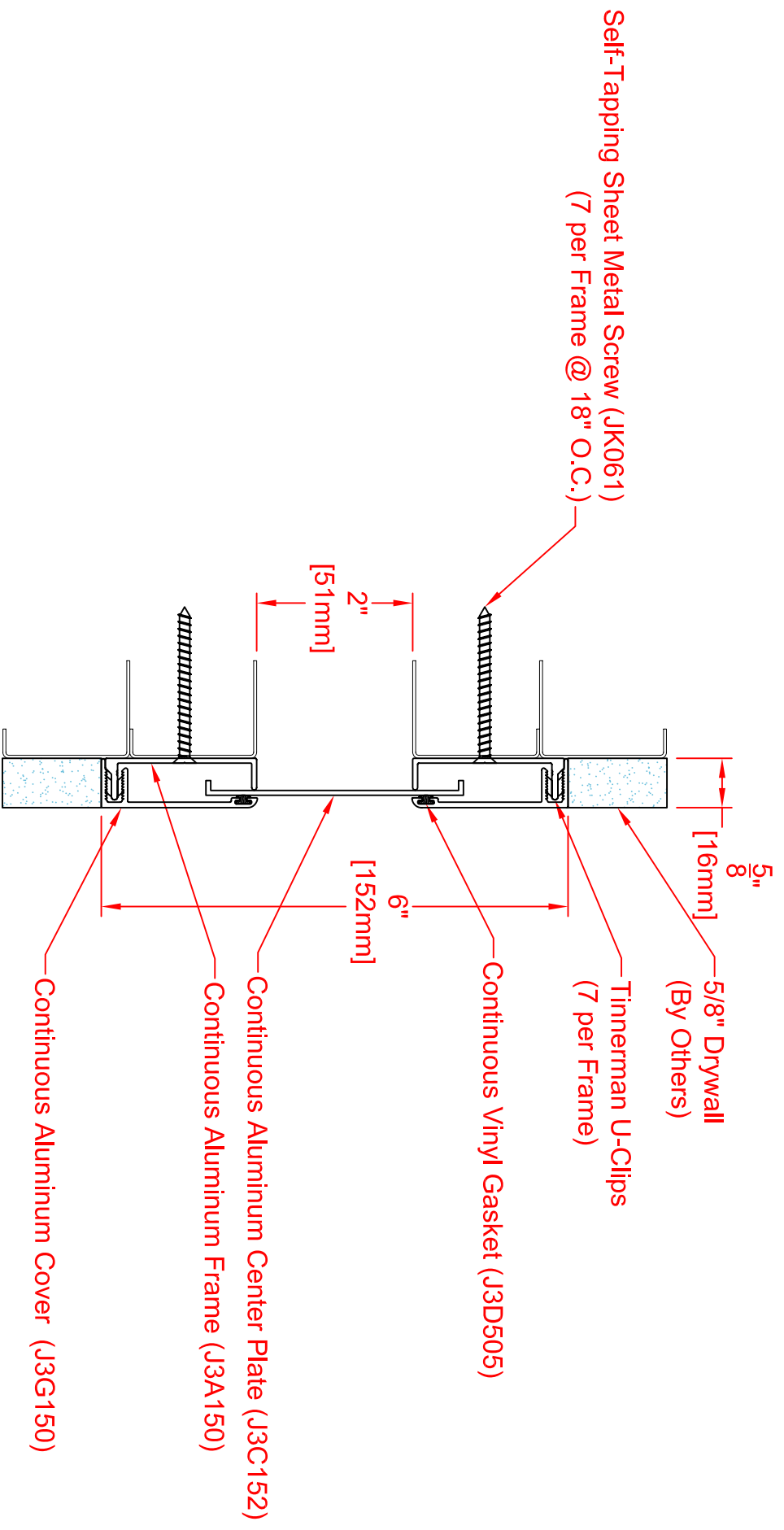


300-A07-025

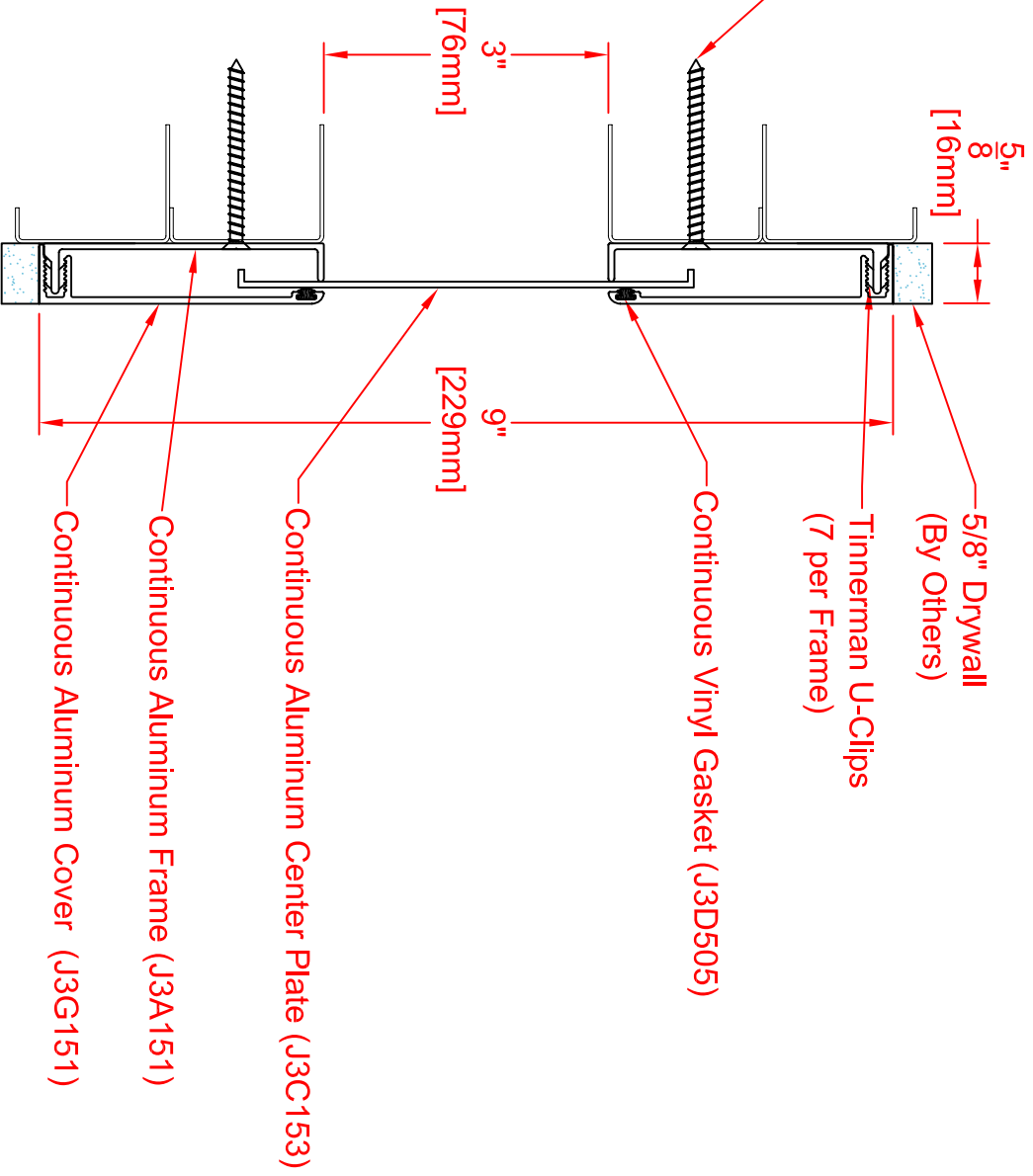
Joint Width	Movement ±	
	Horizontal	Vertical
US mm	US mm	US mm
1"	25	1 1/2"
		13
		1/4"
		6



300-A07-050

Joint Width	Movement ±	
	Horizontal	Vertical
US mm	US mm	US mm
2"	51	1"
	25	1/2"
		13

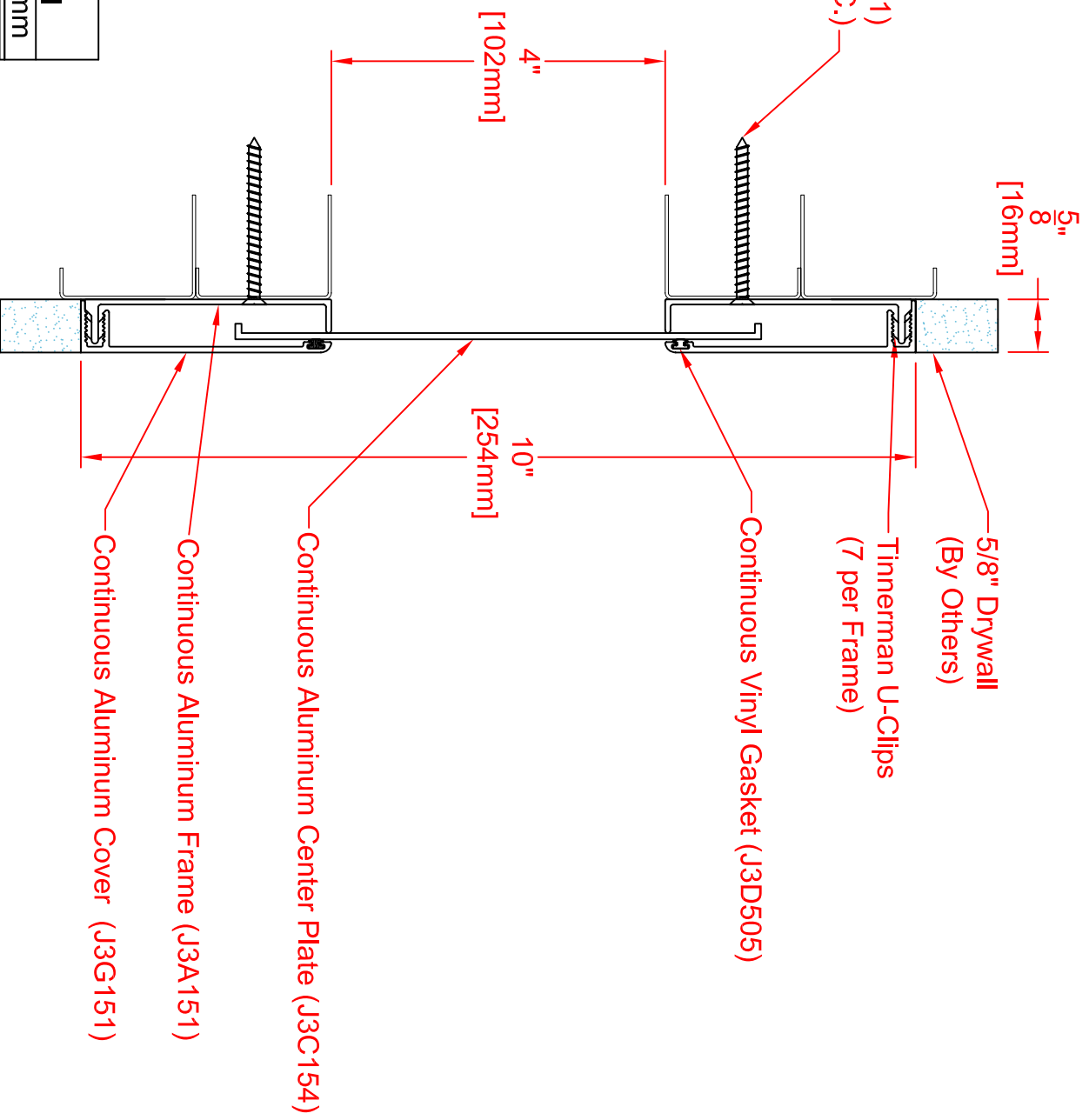
Self-Tapping Sheet Metal Screw (JK061)
(7 per Frame @ 18" O.C.)



300-A07-075

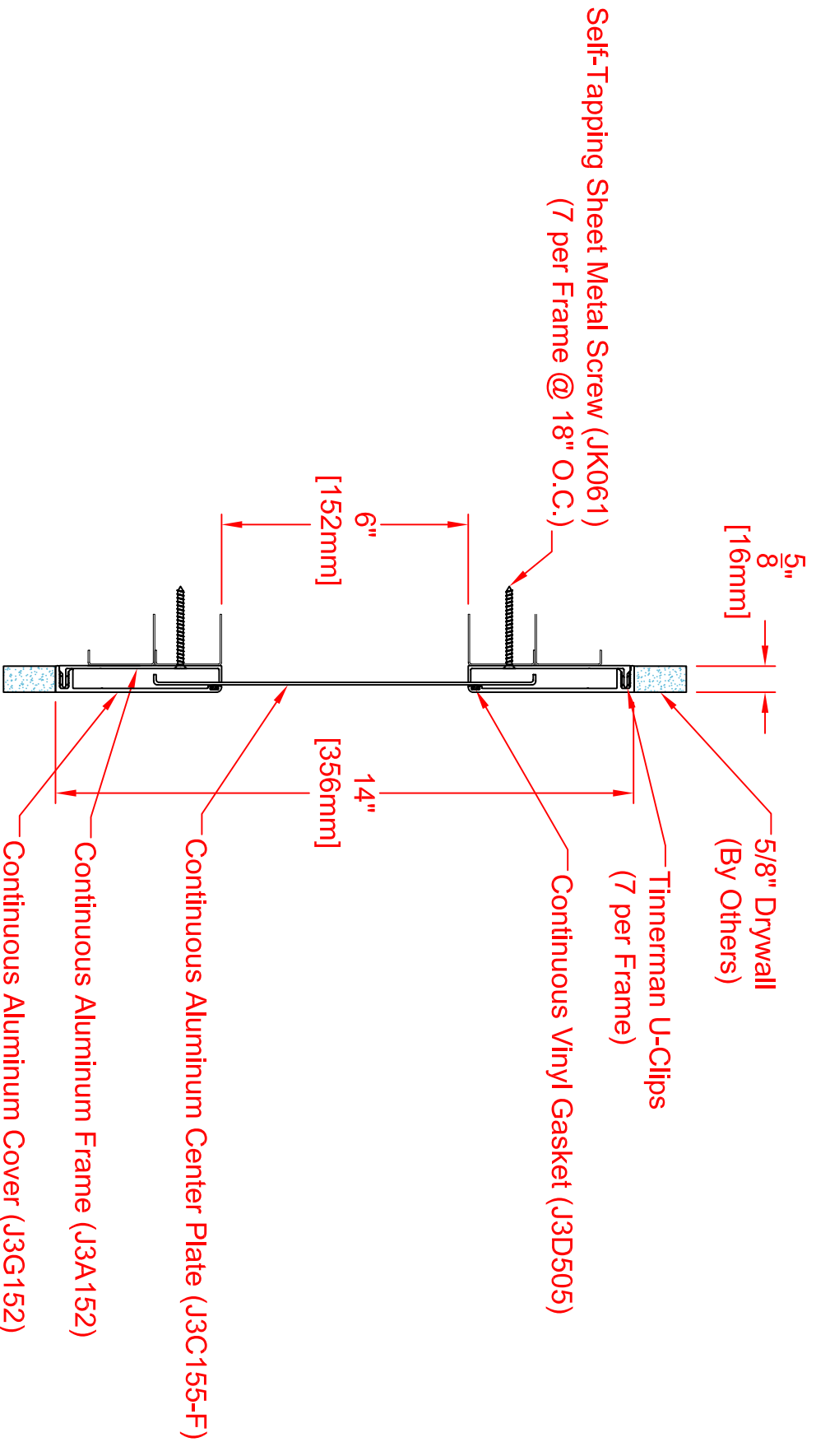
Joint Width	Movement ±	
	Horizontal	Vertical
US mm	US mm	US mm
3" 76	1-1/2" 38	3/4" 19

Self-Tapping Sheet Metal Screw (JK061)
(7 per Frame @ 18" O.C.)



300-A07-100

Joint Width	Movement ±	
	Horizontal	Vertical
US mm	US mm	US mm
4" 102	2" 51	1" 25



300-A07-150

Joint Width	Movement ±	
	Horizontal	Vertical
US mm	US mm	US mm
6" 152	3" 76	1-1/2" 38