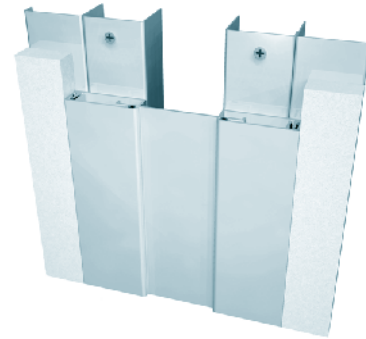


# 300 Series

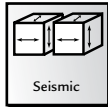
A07 - Wall to Wall or Ceiling to Ceiling

A09 - Wall to Corner or Wall to Ceiling



Movement Rating  $\pm$  50%

## Product Guide



- ▶ Glide plate allows for full seismic movement
- ▶ 13 5/8" recessed frame designed for drywall installations or can be surface mounted
- ▶ Gasketed to eliminate transition rattle
- ▶ Clear anodized finish
- ▶ Snap-fit cover design for easy on-site assembly
- ▶ Wider joint widths available upon request
- ▶  $\pm$  100% movement available on selected models
- ▶ Custom angles available

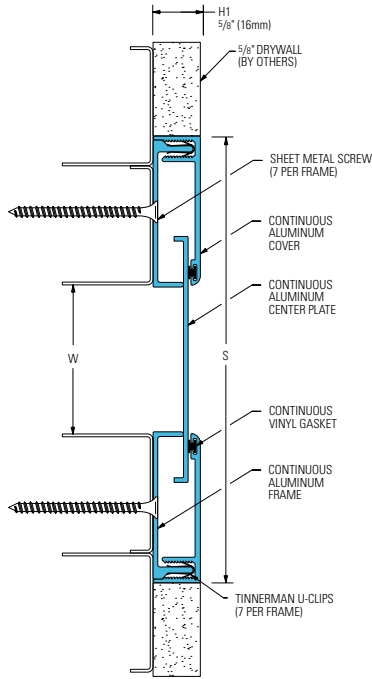
Application	System	W		H1		H2		S		B		Movement +/-				Load	
		Joint Width		Frame Height 1		Height 2		Sight Line		Blockout		Horizontal		Vertical		US ton	kN
		US	mm	US	mm	US	mm	US	mm	US	mm	US	mm	US	mm		
Wall/Wall Ceiling/Ceiling	300-A07-025	1"	25	5/8"	16	*	*	5"	127	2"	51	1/2"	13	1/4"	6	*	*
	300-A07-050	2"	51	5/8"	16	*	*	6"	152	2"	51	1"	25	1/2"	13	*	*
	300-A07-075	3"	76	5/8"	16	*	*	9"	229	3"	76	1 1/2"	38	3/4"	19	*	*
	300-A07-100	4"	102	5/8"	16	*	*	10"	254	3"	76	2"	51	1"	25	*	*
	300-A07-150	6"	152	5/8"	16	*	*	14"	356	4"	102	3"	76	1 1/2"	38	*	*
Wall/Corner Wall/Ceiling	300-A09-025	1"	25	5/8"	16	*	*	2 3/8"	60	2"	51	1/4"	6	1/4"	6	*	*
	300-A09-050	2"	51	5/8"	16	*	*	3 3/8"	86	2"	51	1/2"	13	1/2"	13	*	*
	300-A09-075	3"	76	5/8"	16	*	*	5 3/8"	137	3"	76	3/4"	19	3/4"	19	*	*
	300-A09-100	4"	102	5/8"	16	*	*	6 3/8"	162	4"	102	1"	25	1"	25	*	*
	300-A09-150	6"	152	5/8"	16	*	*	9 3/8"	238	5"	127	1 1/2"	38	1 1/2"	38	*	*

Shear movement – unlimited. 100% movement available on selected models.

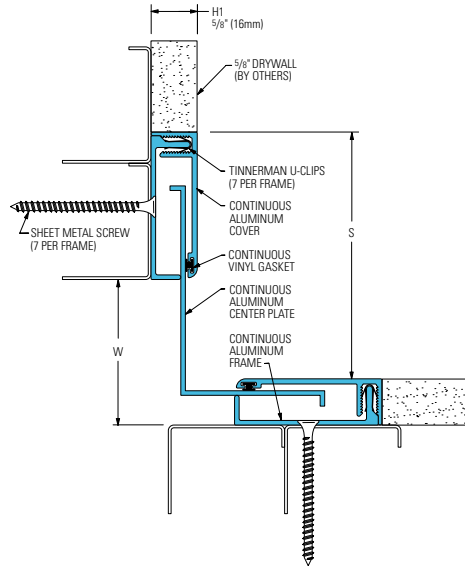
IPC.831/REV.5

# 300 Series Wall and Ceiling Systems

300-A07 Wall/Wall  
(2" (50mm) system shown)



300-A09 Wall/Corner  
(2" (50mm) system shown)



## 300 Series Options

Reactofire Fire Blanket System  
(300-A07-050 system shown)

