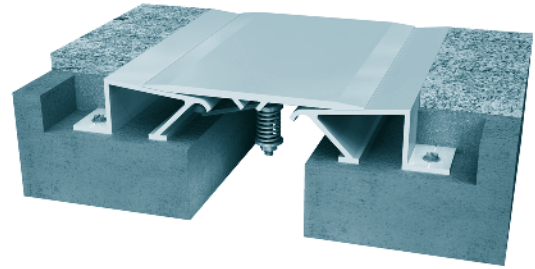


430, 432 Series

A01 - Floor to Floor

A02 - Floor to Wall



Product Guide	Movement Rating ± 50%		
	 Seismic	 Fire Rated Option	 Quick Ship Available

- ▶ Accommodates horizontal, vertical and shear seismic movement
- ▶ Centering bar positions plate over joint
- ▶ Tapered center late design maintains smooth transition
- ▶ Ideal system for use with carpet, vinyl, ceramic tile and other floor finishes
- ▶ Reduced sightline option
- ▶ Load rated
- ▶ Exposed hardware available on the 432 system
- ▶ ± 100% movement available on selected models

SYSTEM DATA

Application	System	W		H1		H2		S		B		Movement +/-				Load	
		Joint Width		Frame Height 1		Height 2		Sight Line		Blockout		Horizontal		Vertical		US ton	kN
		US	mm	US	mm	US	mm	US	mm	US	mm	US	mm	US	mm		
Floor/Floor	430-A01-025	1"	25	1 1/2"	38	*	*	4 1/8"	105	3"	76	1/2"	13	1/4"	6	2.8	25
	430-A01-050	2"	51	1 1/2"	38	*	*	5 1/2"	140	3 1/4"	83	1"	25	1/2"	13	2.8	25
	430-A01-075	3"	76	1 1/2"	38	*	*	7 3/4"	197	4"	102	1 1/2"	38	3/4"	19	3.9	35
	430-A01-100	4"	102	1 1/2"	38	*	*	8 3/4"	222	4"	102	2"	51	1"	25	2.8	25
	430-A01-150	6"	152	1 1/2"	38	*	*	13 1/2"	343	5 1/4"	133	3"	76	1 1/2"	38	2.8	25
430-A01-200	8"	203	1 1/2"	38	*	*	18"	457	7"	178	4"	102	2"	51	2.8	25	
Floor/Wall	430-A02-025	1"	25	1 1/2"	38	*	*	2 1/2"	64	3"	76	1/4"	6	1/4"	6	2.8	25
	430-A02-050	2"	51	1 1/2"	38	*	*	3 3/4"	95	3 1/4"	83	1/2"	13	1/2"	13	2.8	25
	430-A02-075	3"	76	1 1/2"	38	*	*	5 3/8"	137	4"	102	3/4"	19	3/4"	19	3.9	35
	430-A02-100	4"	102	1 1/2"	38	*	*	6 3/8"	162	4"	102	1"	25	1"	25	2.8	25
	430-A02-150	6"	152	1 1/2"	38	*	*	9 3/4"	248	5 1/4"	133	1 1/2"	38	1 1/2"	38	2.8	25
430-A02-200	8"	203	1 1/2"	38	*	*	13"	330	7"	178	2"	51	2"	51	2.8	25	

Shear movement – unlimited.

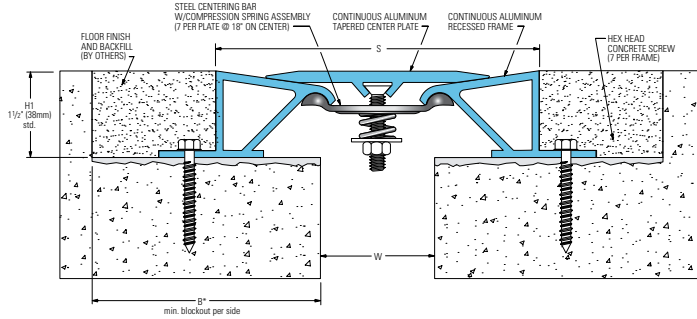
Application	System	W		H1		H2		S		B		Movement +/-				Load	
		Joint Width		Frame Height 1		Height 2		Sight Line		Blockout		Horizontal		Vertical		US ton	kN
		US	mm	US	mm	US	mm	US	mm	US	mm	US	mm	US	mm		
Floor/Floor	432-A01-025	1"	25	1 1/2"	38	*	*	4 1/8"	105	3"	76	1/2"	13	1/4"	6	2.8	25
	432-A01-050	2"	51	1 1/2"	38	*	*	5 1/2"	140	3 1/4"	83	1"	25	1/2"	13	2.8	25
	432-A01-075	3"	76	1 1/2"	38	*	*	7 3/4"	197	4"	102	1 1/2"	38	3/4"	19	3.9	25
	432-A01-100	4"	102	1 1/2"	38	*	*	8 3/4"	222	4"	102	2"	51	1"	25	2.8	25
	432-A01-150	6"	152	1 1/2"	38	*	*	13 1/2"	343	5 1/4"	133	3"	76	1 1/2"	38	2.8	25
432-A01-200	8"	203	1 1/2"	38	*	*	18"	457	7"	178	4"	102	2"	51	2.8	25	

Shear movement – unlimited.

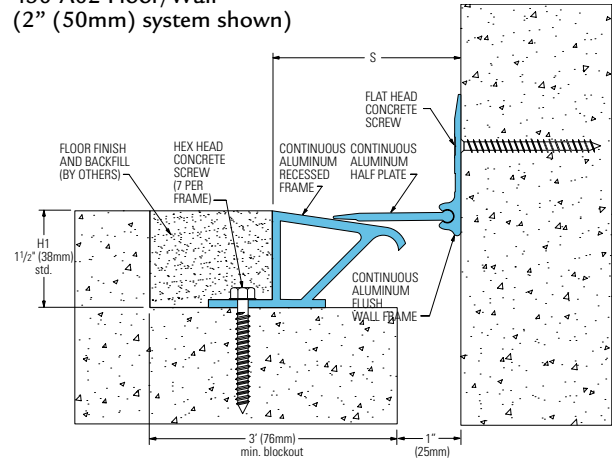
IPC.842/REV.5

430, 432 Series Center Bar Seismic Floor Systems

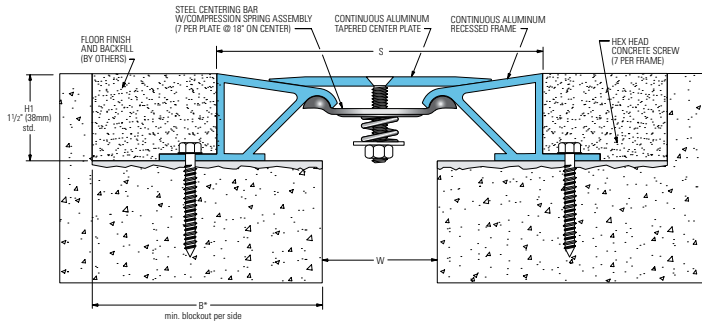
Hidden Fastener Model
430-A01 Floor/Floor
(2" (50mm) system shown)



Hidden Fastener Model
430-A02 Floor/Wall
(2" (50mm) system shown)

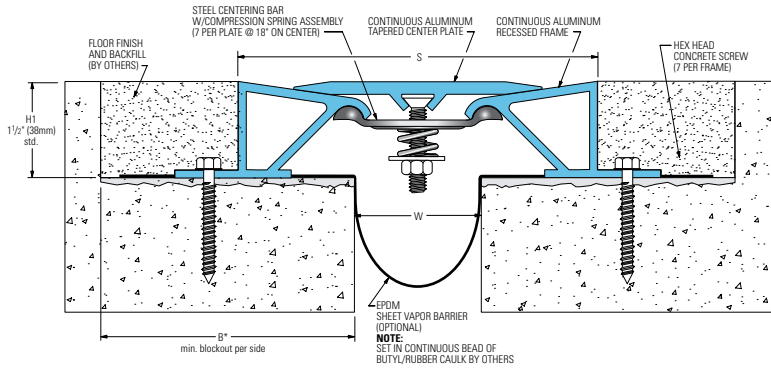


Exposed Fastener Model
432-A01 Floor/Floor
(2" (50mm) system shown)

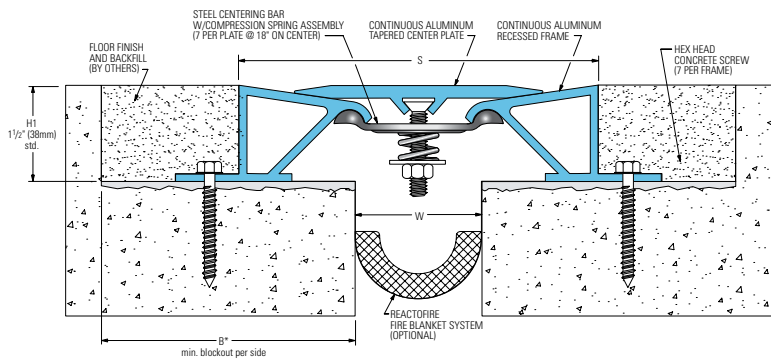


430, 432 Series Options

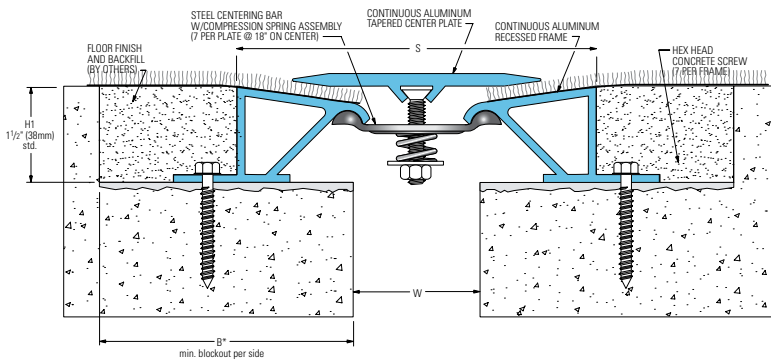
Wrap Around Vapor Barrier (430-A01-050 system shown)



Reactofire Fire Blanket System (430-A01-050 system shown)



Reduced Sightline (430-A01-050 system shown)



P.O. Box 406 · Muskego, Wisconsin 53150 USA

www.inprocorp.com

Nationwide 800.222.5556 / Fax 888.715.8407

International Sales 262.679.5521 / Fax 262.679.5524

