

SOTO



Everything you need to know in order to order.

SOTO™
STATE OF THE OFFICE

A Steelcase Company

details®

SOTO.™ Tools that help the workplace and its workers come together.



Each of the SOTO solutions on the following pages works equally well on freestanding furniture or on c:scape™ furniture from Steelcase.

The tools which integrate with c:scape are precisely designed to fit the geometry of c:scape's drawers, shelves and architecture.

The symmetry of SOTO links work, workers, and the workplace.

SOTO on freestanding furniture or
c:scape™ furniture from Steelcase.



Rail

- Any length Rail supports many SOTO shelf and worktool combinations with clean lines and quiet aesthetic while keeping items up and off the worksurface
- 1" clearance between table and rail for cable management
- Clamp onto worksurfaces or materials up to 2" thick
- Flush with top of worksurface
- Rubber feet under clamps ensure a tight fit without marring the worksurface
- Clamp mounting brackets included

Specifying Hints

- Requires a minimum worksurface depth of 18" inches for stability
- Not applicable for glass surfaces
- 3¼" clearance required under worksurface to accommodate mounting clamp
- Each clamp requires a 2" footprint above worksurface
- Allow for 2" installed behind worksurface for rail mount. Allow for 3¾" to install rail
- Worksurface must be able to support 2.1 lbs. per inch of worksurface width



DSR28

28" wide
4.6 lbs.
W28 x H3½ x D1

DSR34

34" wide
5.2 lbs.
W34 x H3½ x D1

DSR40

40" wide
5.75 lbs.
W40 x H3½ x D1

DSR46

46" wide
6.3 lbs.
W46 x H3½ x D1

DSR52

52" wide
6.9 lbs.
W52 x H3½ x D1

DSR58

58" wide
7.5 lbs.
W58 x H3½ x D1

DSR64

64" wide
8.0 lbs.
W64 x H3½ x D1

Color Finishes

Platinum

DSRT52

Tour furniture system only
52" wide
6.9 lbs.
W52 x H3½ x D1

DSRT58

Tour furniture system only
58" wide
7.5 lbs.
W58 x H3½ x D1

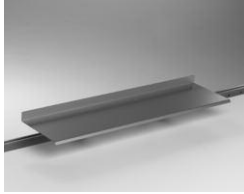
DSRT64

Tour furniture system only
64" wide
8.0 lbs.
W64 x H3½ x D1

Color Finishes

Platinum

SOTO on freestanding furniture or
c:scape™ furniture from Steelcase.

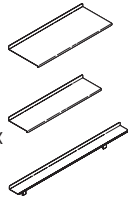


Shelves

- Designed to reclaim worksurface space, support the behavior of piling, and provide a place for personal objects or technology with clean lines and quiet aesthetic
- Supports many configurations of SOTO worktool boxes
- Shelves are able to accommodate boxes on top or underneath
- Able to mount underneath 8" Display Shelf
- 3" shelf holds 22 lbs., 6" shelf holds 30 lbs., and 10" shelf holds 40 lbs. of material per shelf
- Ships with Rail mounting hardware

Specifying Hints

- 3" Shelf accommodates Tool Box and Utility Box
- 6" Shelf accommodates Storage Box Set of 3
- 10" Shelf accommodates Pile Box, Diagonal File Box, and Personal Box
- 10" Shelf accommodates stacked Pile and Personal Boxes
- All SOTO Shelves allow for 2 $\frac{7}{8}$ " between worksurface and bottom of shelf



DSS363

36" wide
4.4 lbs.
W36 x D3 $\frac{1}{2}$

DSS246

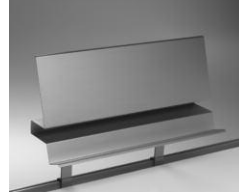
24" wide
5.9 lbs.
W24 $\frac{1}{2}$ x D6 $\frac{3}{4}$

DSS2410

24" wide
7.4 lbs.
W24 $\frac{1}{2}$ x D10 $\frac{1}{4}$

Color Finishes

Arctic White, Platinum
(Stanchion Platinum)

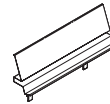


Display Shelves

- Ideal for managing active and anticipated work. Keeps multiple reference materials up off the worksurface and at an angle for easy viewing
- Accommodates letter, legal and A4 materials
- Two height options allow for space under the 8" Shelf to accommodate other SOTO worktool boxes and shelves
- Holds up to 36 lbs. of material per shelf
- Ships with Rail mounting hardware

Specifying Hints

- Channel accommodates the Utility Box
- 5" high stanchion allows for 3 $\frac{1}{8}$ " between worksurface and bottom of shelf
- 8" high stanchion allows for 5 $\frac{7}{8}$ " between worksurface and bottom of shelf



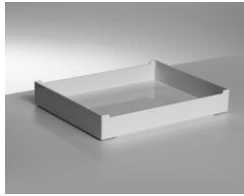
DDS245

24" wide
11 lbs.
W24 $\frac{1}{2}$ x H14 $\frac{3}{4}$
Arctic White, Platinum
(Stanchion Platinum)

DDS248

24" wide
11.5 lbs.
W24 $\frac{1}{2}$ x H17 $\frac{1}{4}$
Arctic White, Platinum
(Stanchion Platinum)

SOTO on freestanding furniture or c:scape™ furniture from Steelcase.

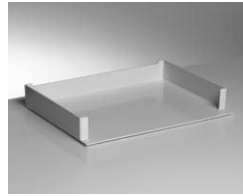
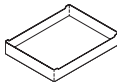


Pile Box

- Ideal for supporting the behavior of piling work and managing both active and anticipated work
- May be used individually, stacked horizontally or criss-crossed. Boxes interlock when stacked horizontally
- May be used freestanding on worksurface or utilized on 10" Shelf
- Fits inside c:scape furniture drawers and on shelves
- Small indent allows user to easily view materials while boxes are stacked
- Accommodates letter size paper or files
- Freestanding only
- High gloss finish

DSSPB

0.7 lb.
W12¼ x H2 x D9⅞
Arctic White, Black

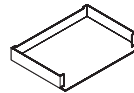


Landscape Letter Box

- Ideal for supporting the behavior of piling work and managing both active and anticipated work
- May be used individually or stacked horizontally. Boxes interlock when stacked horizontally
- May be used freestanding on worksurface or utilized on 10" Shelf
- Fits inside c:scape furniture drawers and on shelves
- Open front allows user to easily view materials while boxes are stacked
- Accommodates letter size paper or files
- Freestanding only
- High gloss finish

DSLLB

0.8 lb.
W13¾ x H2 x D9⅞
Arctic White, Black



Tool Box

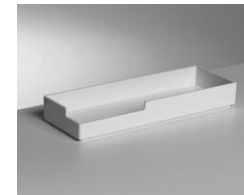
- Sturdy box for pens, pencils, Post-it® notes or any other small office tools
- Fits inside c:scape furniture drawers and on shelves
- Freestanding only
- High gloss finish

Specifying Hints

- Translucent removable insert keeps pens separate from Post-it® notes

DSTB

0.3 lbs.
W3¼ x H3½ x D3½
Arctic White, Black

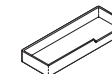


Utility Box

- Utilize on 3" Shelf, inside Personal Box or on worksurface
- Fits inside Display Shelf channel
- Fits inside c:scape furniture drawers and on shelves
- Can be used individually or stacked horizontally
- Freestanding only
- High gloss finish

DSUB

0.3 lbs.
W9 x H1¼ x D3⅞
Arctic White, Black



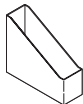


Diagonal File Box

- Ideal for supporting the behavior of piling work and managing active and anticipated work
- Supports binders and other reference materials
- May be used freestanding on worksurface or utilized on 10" Shelf
- Fits inside c:scape furniture drawers and on shelves
- Sits in tall orientation for most materials or shorter orientation for larger materials
- Freestanding only
- High gloss finish

DSDFB

0.5 lb.
W4 x H9 $\frac{7}{8}$ x D12 $\frac{1}{4}$
Arctic White, Black

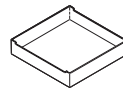


Personal Box

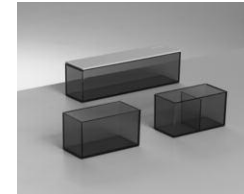
- Provides user controlled area for placement of multiple small business and personal items
- Storage Box Set of 3 fits neatly inside
- May be used freestanding on worksurface or utilized on 10" Shelf
- Fits inside c:scape furniture drawers and on shelves
- Small indent allows user to easily view materials while boxes are stacked
- May be used individually or stacked horizontally. Boxes interlock when stacked horizontally
- Utility Box fits neatly on edge and slides back and forth
- Freestanding only
- High gloss finish

DSPB

0.3 lb.
W9 x H2 x D9
Arctic White, Black



SOTO on freestanding furniture or c:scape™ furniture from Steelcase.



Storage Box Set of 3

- Set of three small translucent boxes for infinite uses—one open rectangle, one open rectangle with permanent divider, one long rectangle with white lid
- May be used freestanding on worksurface or utilized with the 3" shelf, 6" shelf or Personal Box
- Fits inside c:scape furniture drawers and on shelves
- Freestanding only

DSSB

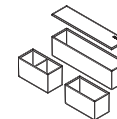
Large
0.4 lb.
W8 $\frac{5}{8}$ x H2 $\frac{3}{8}$ x D2 $\frac{1}{8}$

Small w/divided Rectangle
0.2 lb.
W4 $\frac{1}{4}$ x H2 $\frac{3}{8}$ x D2 $\frac{1}{8}$

Small w/o divided Rectangle
0.2 lb.
W4 $\frac{1}{4}$ x H2 $\frac{3}{8}$ x D2 $\frac{1}{8}$

Color Finishes

Semi-opaque boxes with white cover



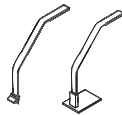
SpecTip The Storage Box Set of 3 fits inside the Personal Box.

SOTO on freestanding furniture or c:scape™ furniture from Steelcase.



LED Task Light

- Minimalistic design with simple lines
- Low energy consumption and reduced need for replacement bulbs
- Freestanding base is 4¼" wide and 6" deep
- Rail mount bracket may occupy the same Rail space as a SOTO Shelf extending over the Shelf itself
- 4 watt LED
- 120v
- SOTO rail mounted, c:scape rail architecture or freestanding
- Average rated life of LEDs is 50,000 hours
- Certification: U.L.® & C.U.L.® listed
- 9' cord length, black
- Steel base, aluminum arm
- Mercury free



DSLEDR

Rail mounted
0.6 lb.
W3½ x H14¼ x D12¼
Arctic White, Platinum,
Low Gloss Black

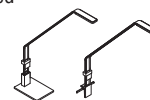
DSLEDF

Freestanding
2.2 lbs.
W4¼ x H14¼ x D13¼
Arctic White, Platinum,
Low Gloss Black



Extended LED Task Light

- Minimalistic design with simple lines
- Low energy consumption and reduced need for replacement bulbs
- Freestanding base is 4¼" wide and 6" deep
- Rail mount bracket may occupy the same Rail space as a SOTO Shelf extending over the Shelf itself
- 4 watt LED
- 120v
- SOTO rail mounted, c:scape rail architecture or freestanding
- Average rated life of LEDs is 50,000 hours
- Certification: U.L.® & C.U.L.® listed
- 9' cord length, black
- Steel base, aluminum arm
- Mercury free



DSLEDER

Rail mounted
0.7 lb.
W3½ x H14¼ x D21¼
Arctic White, Platinum,
Low Gloss Black

DSLEDEF

Freestanding
2.3 lbs.
W4¼ x H14¼ x D21¼
Arctic White, Platinum,
Low Gloss Black



Mini LED Task Light

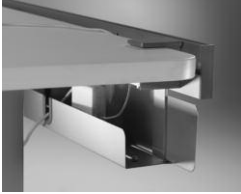
- Minimalistic design with simple lines
- Low energy consumption and reduced need for replacement bulbs
- Miniature version of the 4-watt SOTO LED light
- Ideal for illuminating dark areas beneath steel or wood storage elements
- Magnet and screw mounting hardware included
- Clips for cord management included
- 4 watt LED
- 120v
- Average rated life of LEDs is 50,000 hours
- Certification: U.L.® & C.U.L.® listed
- 9' cord length, black
- Mercury free



LMINILED

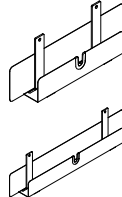
Rail mounted
0.3 lb.
W7 x H¾ x D1¾
Platinum

SOTO on freestanding furniture or
c:scape™ furniture from Steelcase.



Cableway

- Integrates with the SOTO Rail to help manage cables and power at worksurface height for a clean aesthetic
- Cableway hangs 8" below worksurface, this is a fixed height
- Cableway is mounted to Rail under the worksurface
- Can be used in combination with the c:scape Personal/Modesty Screen



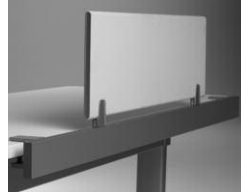
DSCW20

20" wide
2 lbs.
W20 x H8 x D2½
Platinum

DSCW30

30" wide
2 lbs.
W30 x H8 x D2½
Platinum

SpecTip For use with freestanding furniture.



Personal/Modesty Screens

See Steelcase c:scape/media:scape electronic catalog (SCX) for color availability, pricing information and ordering.

- Tackable and user moveable
- Provides variable privacy when and where it is needed
- Can be used with Rail
- Can be mounted either above the worksurface for visual privacy or below Rail for modesty
- Brackets come attached to the screens and are for all applications. Brackets clip into the rail

Specifying Hints

- Available in two heights and three widths to accommodate varying levels of privacy
- Height is measured from the top of the mounting surface to the top of the screen
- Gap is 1" between Personal/Modesty screen and mounting surface
- When using COM fabric, it is recommended that nonpatterned fabric be used to provide a consistent visual between adjacent screens, and from one side to the other



CQSP3012

30" wide
3 lbs.
W30 x H12 x D¾
Platinum

CQSP3612

36" wide
3.5 lbs.
W36 x H12 x D¾
Platinum

CQSP4212

42" wide
4 lbs.
W42 x H12 x D¾
Platinum

CQSP3019

30" wide
4.5 lbs.
W30 x H19 x D¾
Platinum

CQSP3619

36" wide
5.5 lbs.
W36 x H19 x D¾
Platinum

CQSP4219

42" wide
6 lbs.
W42 x H19 x D¾
Platinum

Proof of the time-honored truism:
the whole is greater than the sum of the parts.

And oh so sustainable.



The entire* SOTO™ collection is designed
to meet silver Cradle to Cradle specifications.

* The composition of the cord and driver precludes full C2C certification for the LED light.

SOTO.™ Tools that help the workplace
and its workers come together.



Each of the SOTO products on the following pages
works exclusively and seamlessly with the architecture
of Steelcase c:scape™ furniture. Each bracket is precisely designed
to fit the geometry of c:scape's architecture.

SOTO on c:scape™ furniture.



FYI® Single Flat Panel Monitor Arm with c:scape Bracket

- Healthier viewing reduces eyestrain and promotes good ergonomic health through stress-free posture
- Easier on-screen information sharing
- Supports monitors weighing 5 – 20 lbs.
- Built-in mechanism so the user can easily counterbalance the monitor
- 4" minimum and 24" maximum focal adjustability range
- 11½" vertical adjustment range
- 20° backward tilt
- 30° forward tilt
- 160° panning range
- 200° lower arm rotation
- 360° upper arm rotation
- Rotation allows for landscape or portrait viewing
- Includes monitor arm and mounting bracket
- Cable management included with the arm
- An anti-dislodgement feature is included
- Additional screw included to provide monitor security
- Quick-Connect™ capability for easy connection (or disconnection) of a monitor
- Not intended for touch screen applications

Specifying Hints

- Each Monitor Support Arm includes 75mm and 100mm VESA mounting plate and tilt knuckle
- Freestanding c:scape tables must be tethered to accommodate a Flat Panel Monitor Arm

DFPASINGLECS

15 lbs.
W14 x H15
Pewter, Charcoal, Arctic White



FYI-2° Dual Flat Panel Monitor Arm with c:scape Bracket

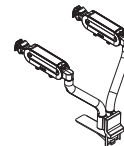
- Supports monitors weighing 5 – 20 lbs. A field-replaceable pneumatic cylinder is available to accommodate heavier monitors
- Built-in mechanism so the user can easily counterbalance the monitor
- 4" minimum and 24" maximum focal adjustability range
- 11½" vertical adjustment range
- 20° backward tilt
- 30° forward tilt
- 160° panning range
- 180° rotation around the base axis
- 360° upper arm rotation
- Rotation allows for landscape or portrait viewing
- Includes monitor arms and mounting bracket
- Cable management included with the arms
- An anti-dislodgement feature is included
- Additional screw included to provide monitor security
- Quick-Connect™ capability for easy connection (or disconnection) of a monitor
- Not intended for touch screen applications

Specifying Hints

- Each Monitor Support Arm includes 75mm and 100mm VESA mounting plate and tilt knuckle
- Bracket occupies 3¾" on c:scape desk rail system

DFPADUALCS

20 lbs.
W24 x H15
Pewter, Charcoal, Arctic White



FYI LED with Bracket

- Low energy consumption and reduced need for replacement bulbs
- 4 watt LED
- 120v
- .35 Amps Max. (350mA)
- Average rated life of LEDs is 50,000 hours
- Certification: U.L.® & C.U.L.® listed
- 9' cord length, black
- Light to bracket hardware included
- For use with the FYI Flat Panel Monitor Arm
- Mercury free

FPALED

0.75 lb. assembled
W2½ x H4¼ x D7¼
Platinum (Light)
Black (Bracket)



Monitor arms should only be mounted to desks that are either tethered to the beam, the back of another desk, or 1½-high low storage. Large objects should not be mounted to the backside of a freestanding desk.

Please refer to the online electronic version of the Details SpecGuide for current pricing.



19" Platform with c:scape Bracket

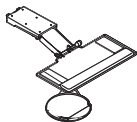
- Available in left or right mouse configurations
- Supports Microsoft® Natural® Keyboard Platform
- Same-plane, compound-swiveling mouse surface w/Green-Gel Palm Rest
- Patent-pending integrated mouse retention fence/wire management
- 100% Recycled kraft paper content
- Optional Green-Gel Palm Rest (Style number GG in the Computer Support Tools section of the Details SpecGuide)
- Mounts to underside of c:scape desk understructure
- Available for 24" and 30" worksurface depths

D519MLGG24CS

12 lbs.
W19 x H9¼ x D¼
Black

D519MLGG30CS

12 lbs.
W19 x H9¼ x D¼
Black

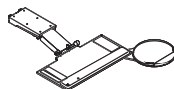


D519MRGG24CS

12 lbs.
W19 x H9¼ x D¼
Black

D519MRGG30CS

12 lbs.
W19 x H9¼ x D¼
Black

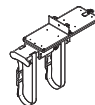


Vertical Processor Sling with c:scape Bracket

- Stores vertical, tower-oriented processors under the worksurface
- Easy accessibility to disk drives and cables
- Slides out 4" and swivels 360°
- Adjustable straps support processors with perimeters up to 53" and weights up to 75 lbs.
- For use with CD-ROM drives in tower-orientation only
- Mounts to underside of worksurface or c:scape desk understructure

DCPRSLCS

8 lbs.
W5½ x D19½
Black



SOTO on c:scape™ furniture.



SlatRail Bracket for c:scape

- Bracket allows for any size Details SlatRail to easily mount to the Steelcase c:scape desk rail system

Note: See the Organizational Worktools section of the Details SpecGuide for more information on Slatwall and SlatRail.

DSRCS

20 lbs.
W20 x H19 x D10
Platinum



Slatwall Bracket for c:scape

- Bracket allows for any size Details Slatwall to easily mount to the Steelcase c:scape desk rail system

Note: See the Organizational Worktools section of the Details SpecGuide for more information on Slatwall and SlatRail.

DSWCS

15 lbs.
W10 x H30 x D3
Platinum



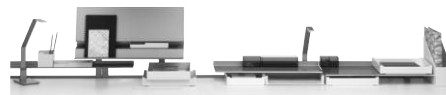
A collection of connected worktools.

SOTO

Sure each SOTO worktool works SOLO.

But the true beauty (literally and figuratively) lies in SOTO's symmetry. The entire collection works as a cohesive set of tools – nothing piecemeal here – designed to link work, workers, and the workplace.

Further, SOTO helps workers streamline and organize their *anticipated* work. And it enhances action on *active* work.



Work. Make it a moving experience.™

For further information, please go to the Details website details-worktools.com or call 800.833.0411

P.O. Box 1967 / CD-5E Grand Rapids, MI 49501-1967

©2010 Steelcase Inc. All rights reserved. 11/10

For a better day at work.®

details®

A Steelcase Company