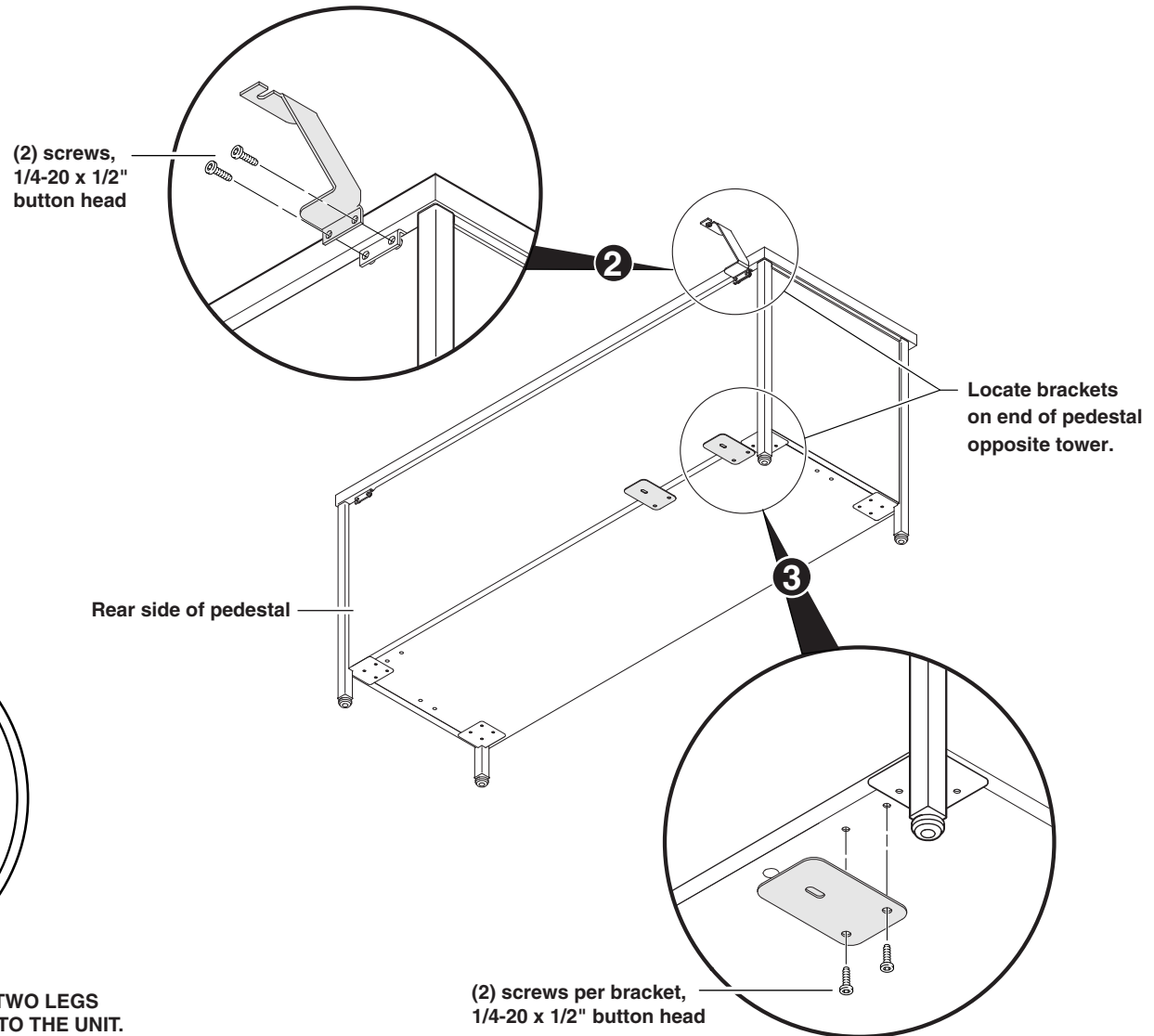


If you have a problem, question, or request, call your local dealer, or Coalesse at 1.800.627.6770 Or visit our website: www.coalesse.com

© 2011 Coalesse
San Francisco, California U.S.A.
Printed in U.S.A.

Prepare Tower Pedestal

1. Determine if you have a left hand or right hand application.
2. Attach (1) upper bracket as shown.
3. Attach (2) lower brackets as shown.

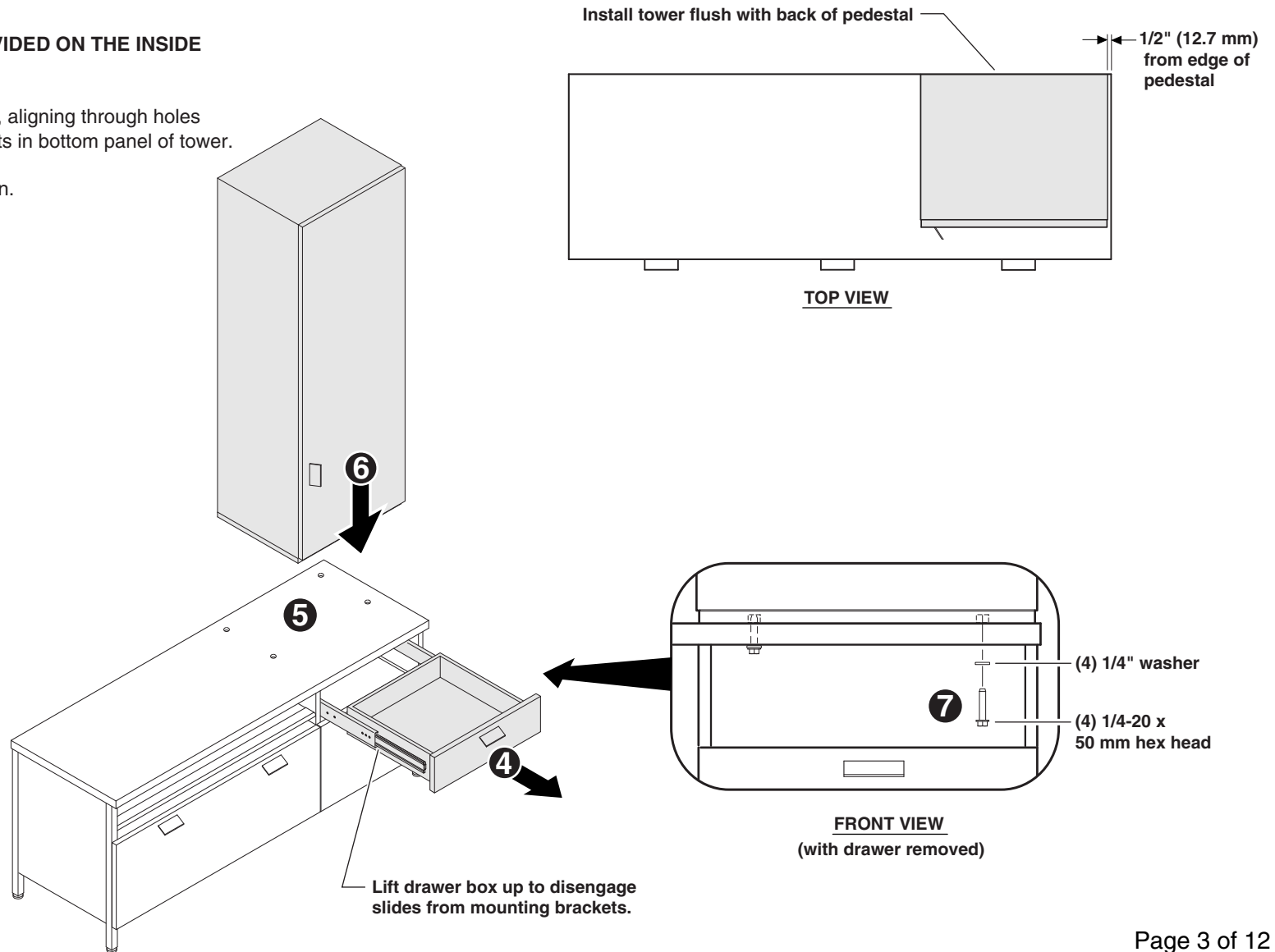


CAUTION: DO NOT TIP PEDESTAL ONTO TWO LEGS TO MOVE AS IT COULD CAUSE DAMAGE TO THE UNIT.

4. Remove ALL drawer(s) as shown, if required.
5. Drill 3/8" diameter holes through top in desired location on LH or RH side.

NOTE: PILOT HOLES ARE PROVIDED ON THE INSIDE OF THE TOP.

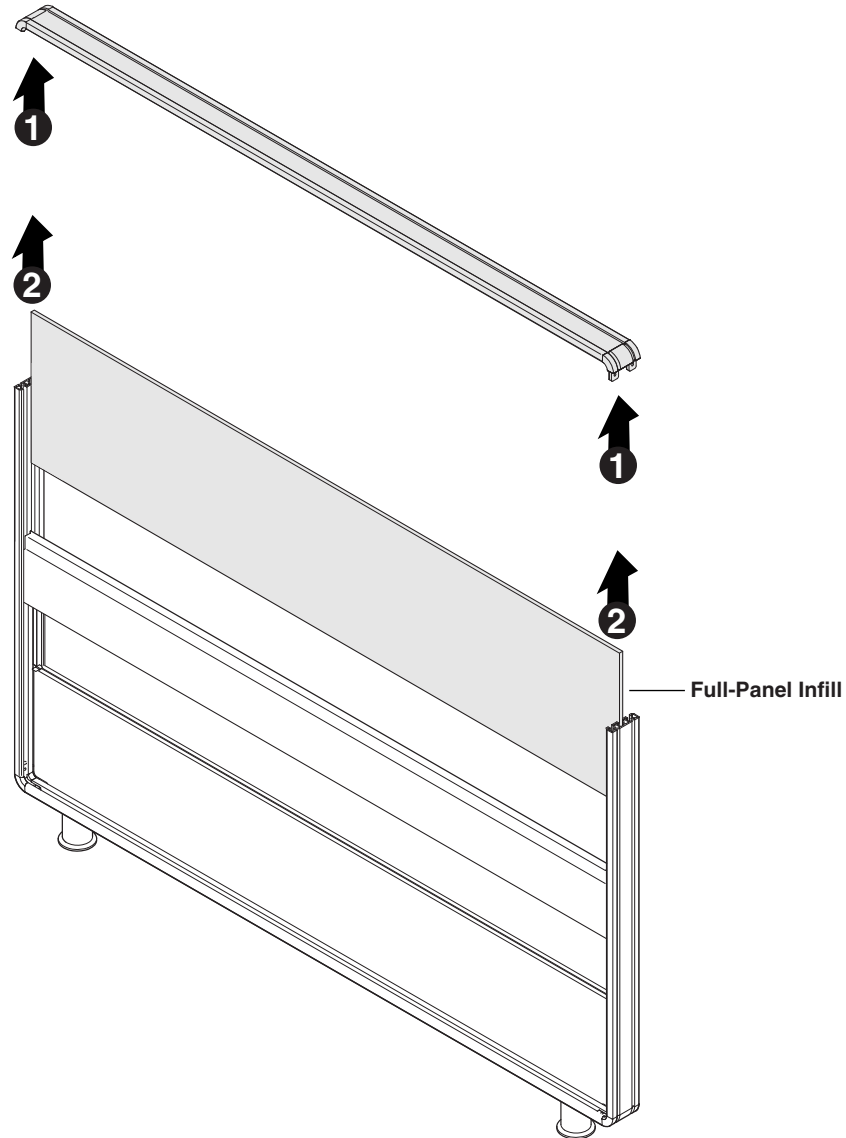
6. Carefully lift tower into position, aligning through holes in pedestal top with threaded inserts in bottom panel of tower.
7. Secure with hardware as shown.
8. Reinstall drawer(s), if required.



Desk Loop Assembly

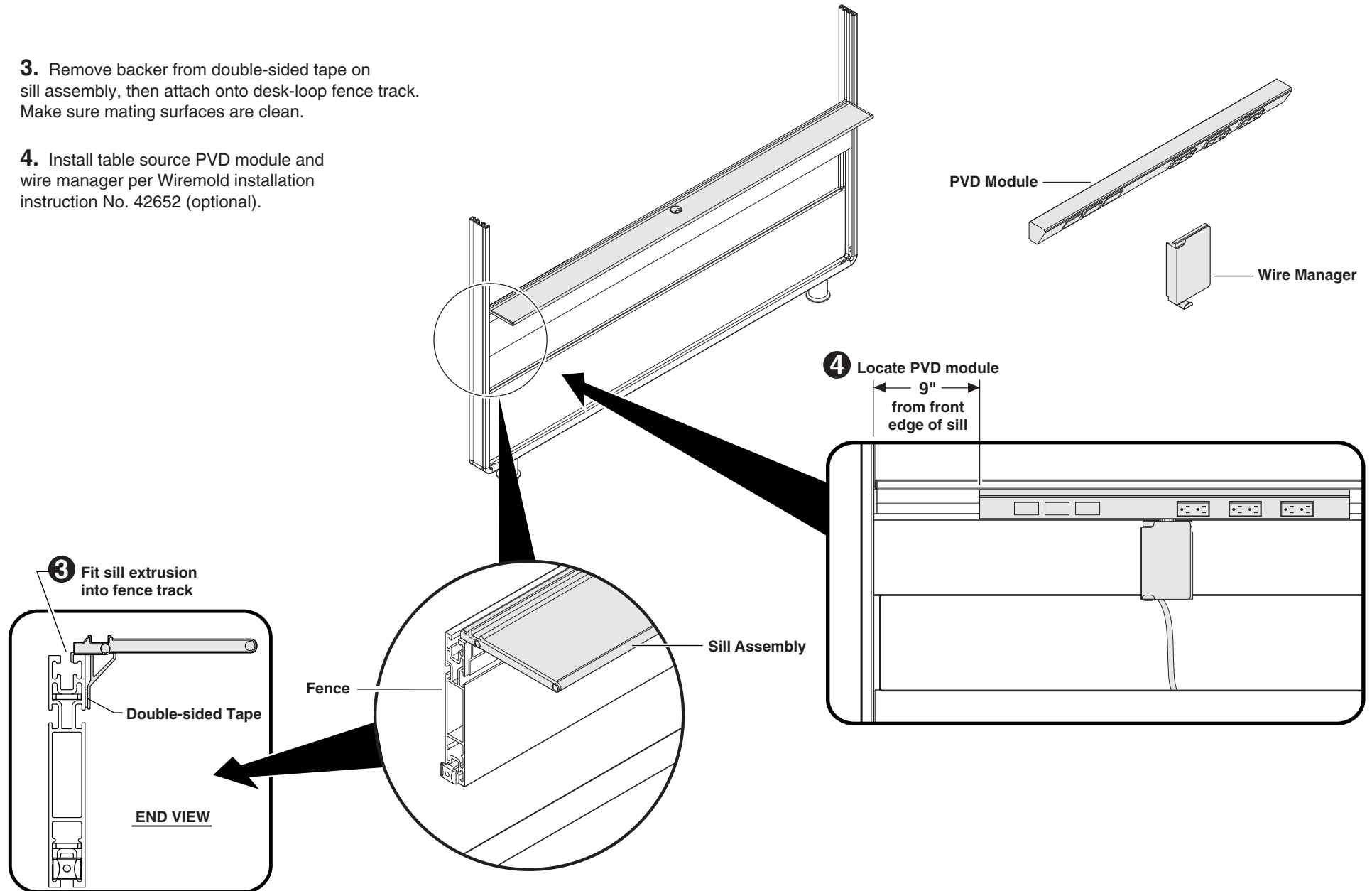
1. Loosen set screws (4) places and remove top horizontal loop.

2. Slide full-panel infill up and out of center track and retain

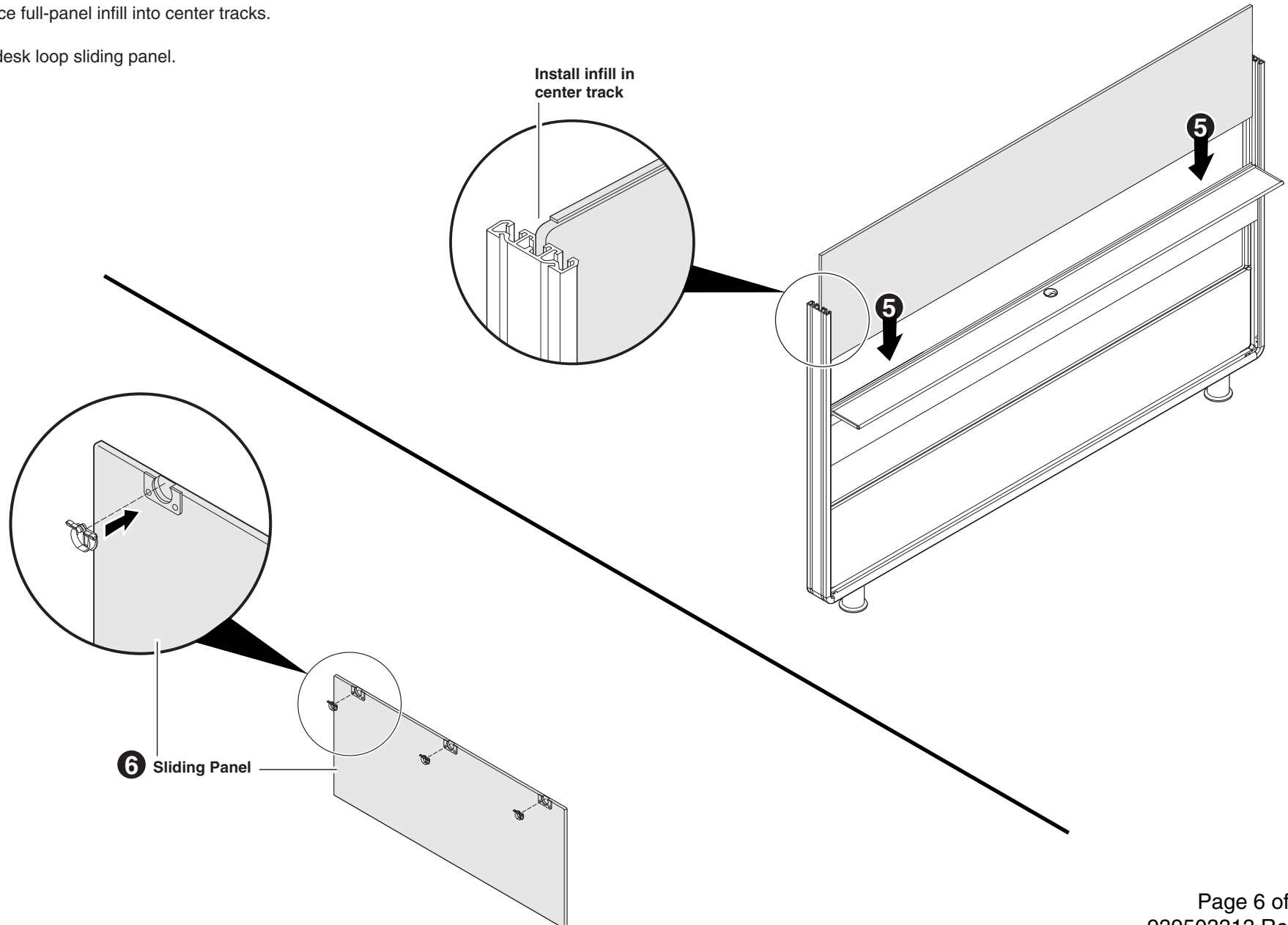


3. Remove backer from double-sided tape on sill assembly, then attach onto desk-loop fence track. Make sure mating surfaces are clean.

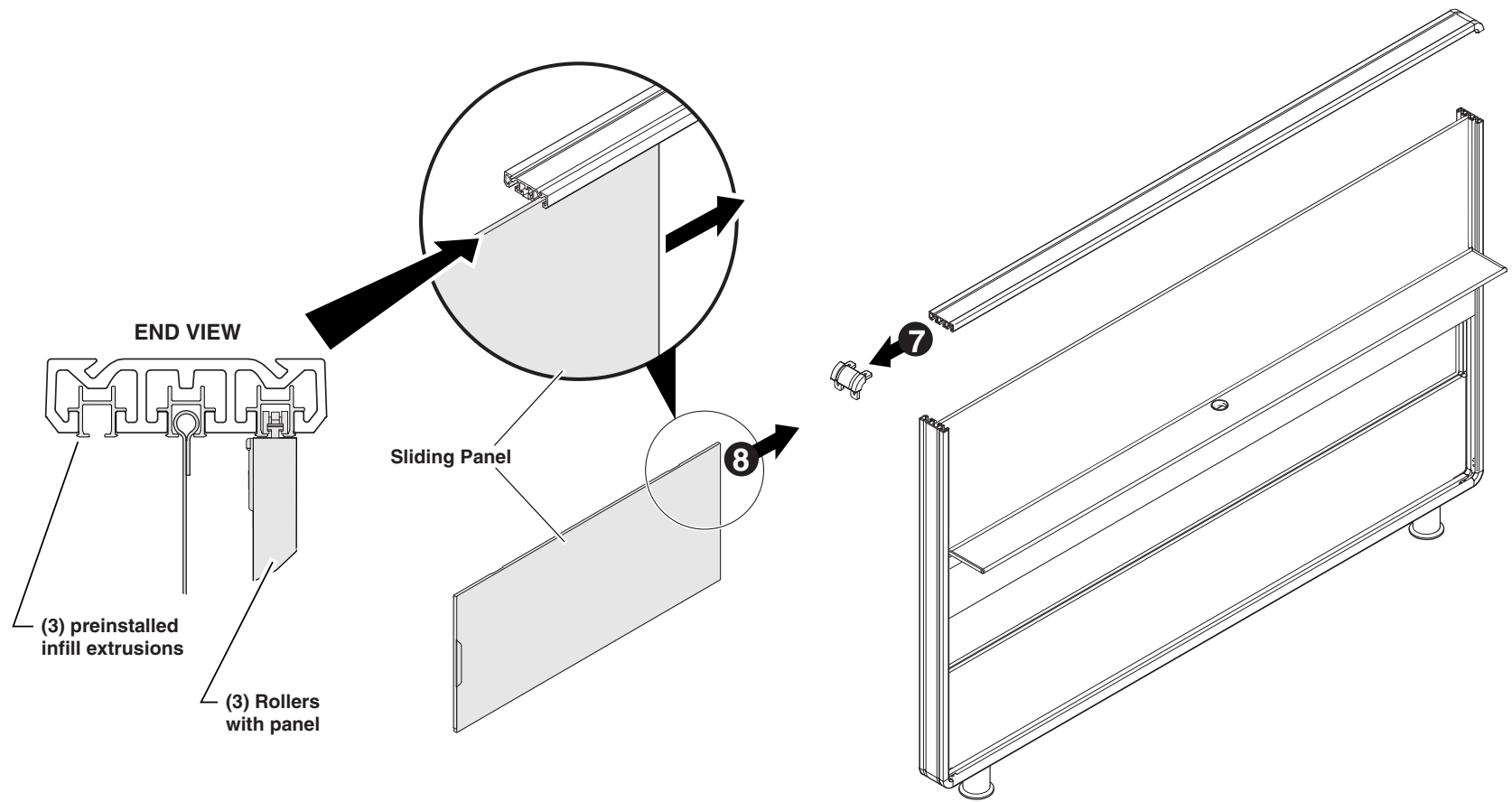
4. Install table source PVD module and wire manager per Wiremold installation instruction No. 42652 (optional).



5. Replace full-panel infill into center tracks.
6. Prep desk loop sliding panel.



7. Remove forward corner casting of top loop.
8. Slide panel into forward track.

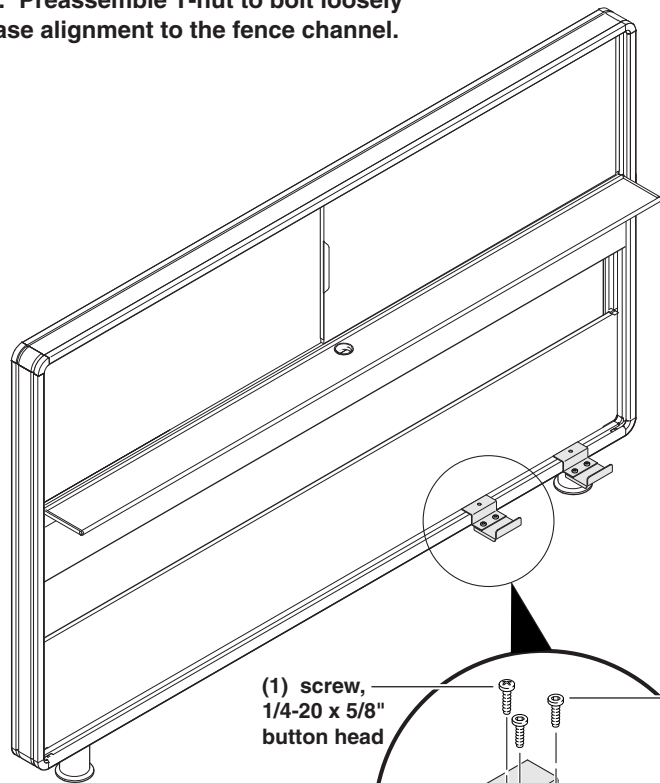
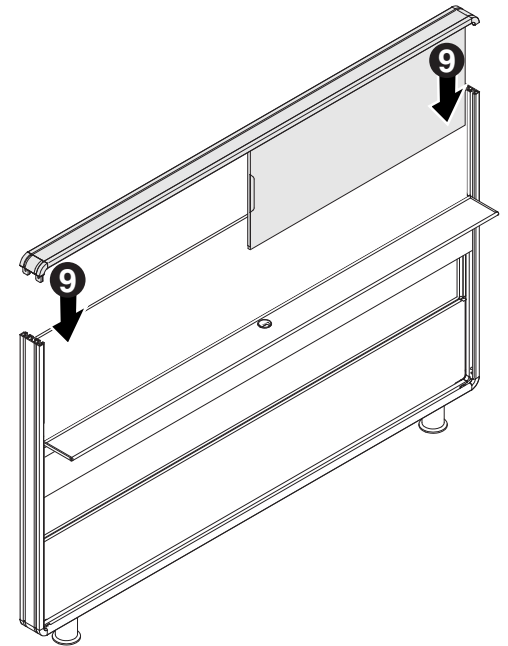


9. Reassemble and install top horizontal loop (with sliding panel, if applicable).

10. Preassemble (2) pedestal connection brackets. Loosely preassemble T-nut and bolt.

11. Loosely install bracket assemblies in bottom track of desk loop.

Hint: Preassemble T-nut to bolt loosely to ease alignment to the fence channel.

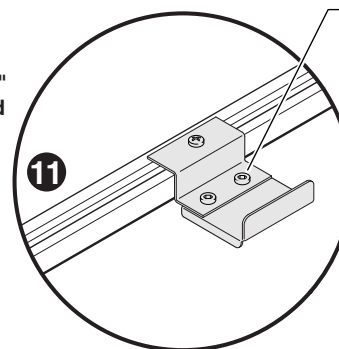


(1) screw,
1/4-20 x 5/8"
button head

(2) screws,
1/4-20 x 1/2"
button head

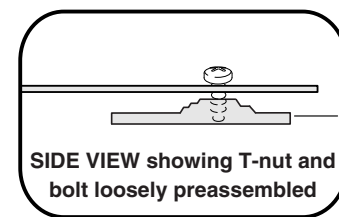
T-Nut

10



Tighten screws after
completing step 11

11



T-Nut will fit
in channel
SIDE VIEW showing T-nut and
bolt loosely preassembled

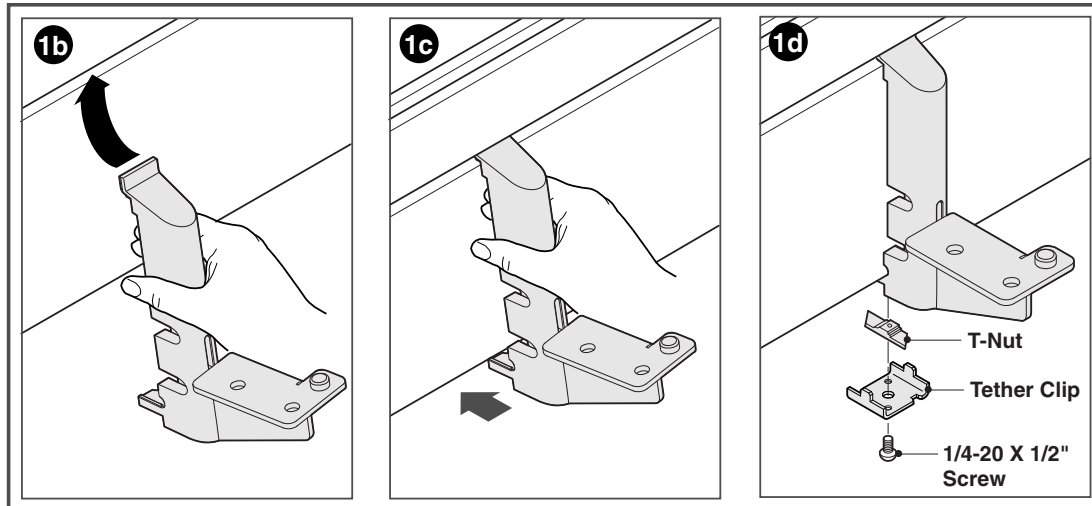
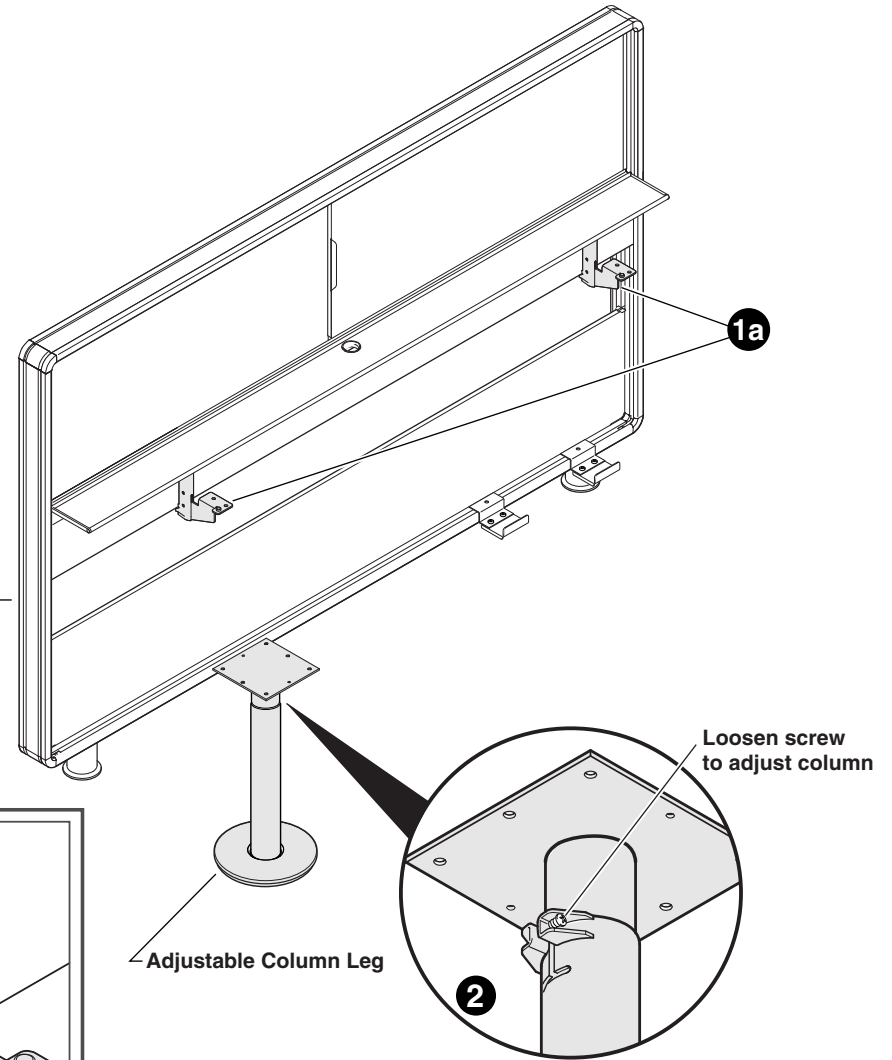
Install Desktop to Desk Loop

NOTE: TETHER BRACKETS AND HYPER-GLIDE ARE PACKED WITH THE ADJUSTABLE HEIGHT COLUMN.
(2) BRACKETS ARE REQUIRED FOR 6' AND 7' LOOPS,
(3) BRACKETS FOR 8' LOOP.

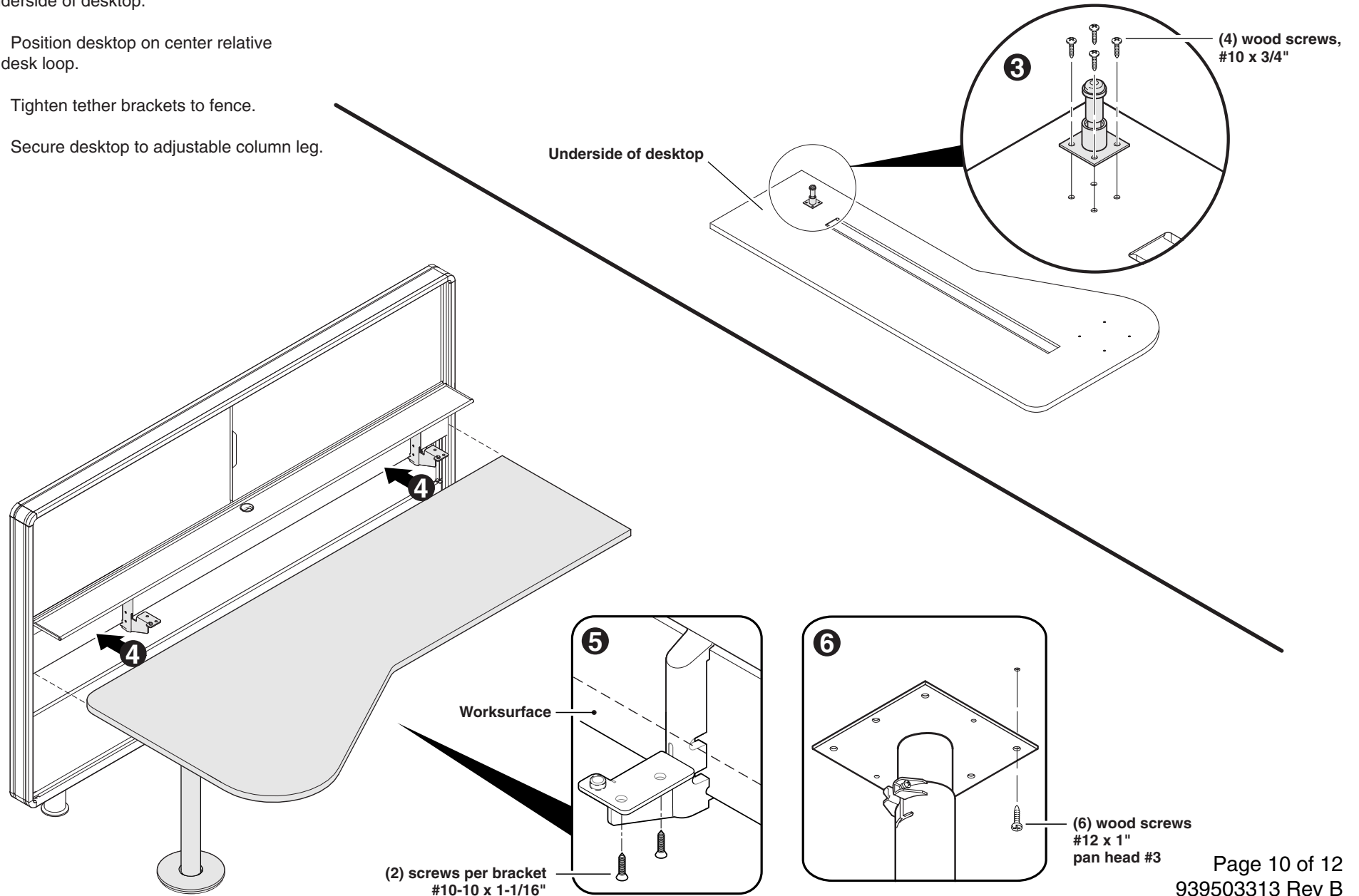
1. Loosely preassemble the tether table brackets to the fence in the approximate locations shown.

2. Adjust tether brackets and adjustable column leg to desired height.

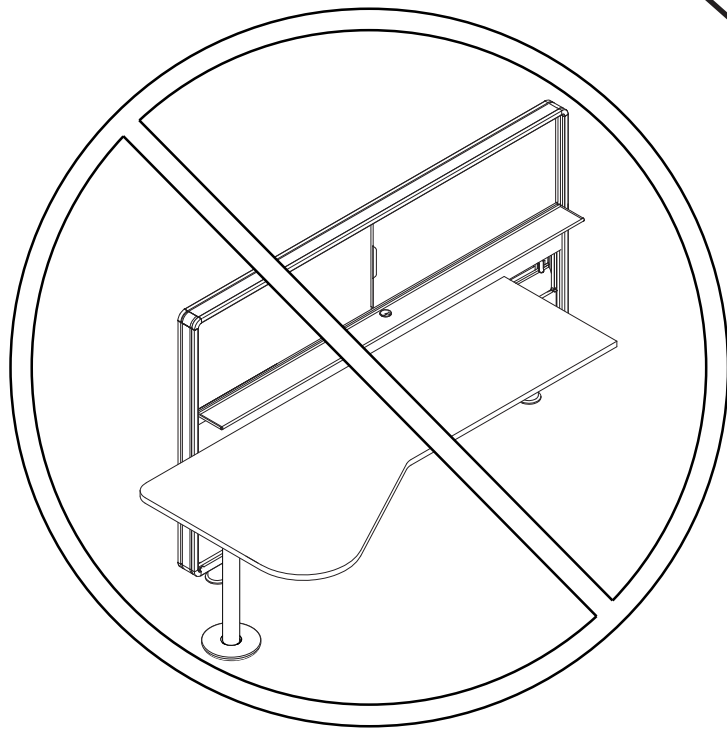
7' Desk Loop shown here



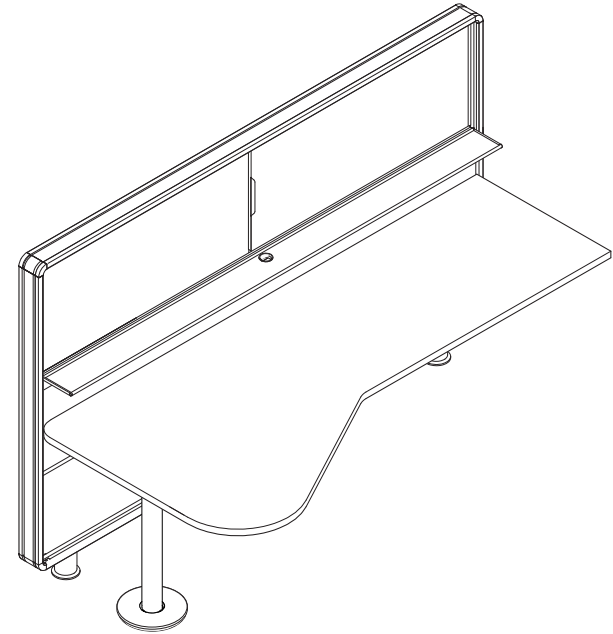
3. Attach telescoping hyper-glide to underside of desktop.
4. Position desktop on center relative to desk loop.
5. Tighten tether brackets to fence.
6. Secure desktop to adjustable column leg.



Freestanding Desktop and Desk Loop Application



Do not flex desktop relative to desk loop in a freestanding application.



In a freestanding application, align desktop with desk loop.

Install Pedestal to Desk-Loop Assembly

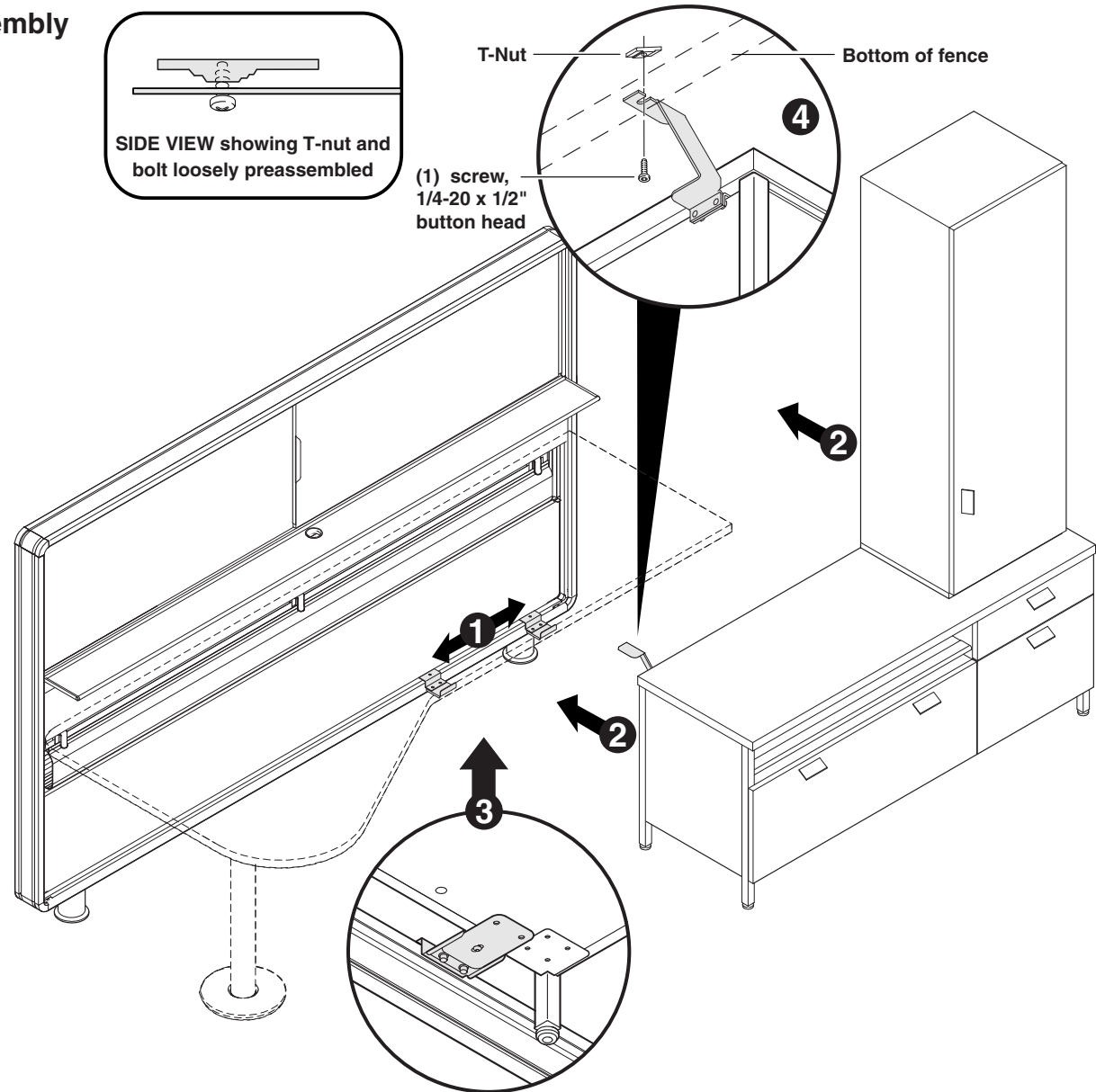
1. Determine amount of pedestal flex relative to desk-loop, based on application.

2. Move pedestal into position under desktop.

Note: Make sure pedestal and desk-loop are level before tightening brackets.

3. Secure loop-to-ped brackets to lower brackets on bottom rear of pedestal.

4. Fasten top loop-to-ped bracket in track on bottom of fence.



Bottom view showing loop-to-ped brackets attached to lower brackets on pedestal.